

Proposed Lot Splits
FOR
Greenland Consulting, Inc.
Richard C. Gray Living Trust
Vol. 650 Pg. 622
Part of Lot 5 & 16 Tract 1 & 2
Concord Township
County of Lake, State of Ohio
October 26, 2005

THE BOUNDARY SURVEY PLAT WAS DRAWN ON OCTOBER 26, 2005
REVISED: NOVEMBER 9, 2005

This Boundary Survey has been prepared in accordance with Chapter 4783-37 Ohio Administrative Code for Minimum Standards for Boundary Surveys as adopted 2-16-00. This survey was performed under my supervision, and is believed to be correct and accurate to the best of my knowledge.

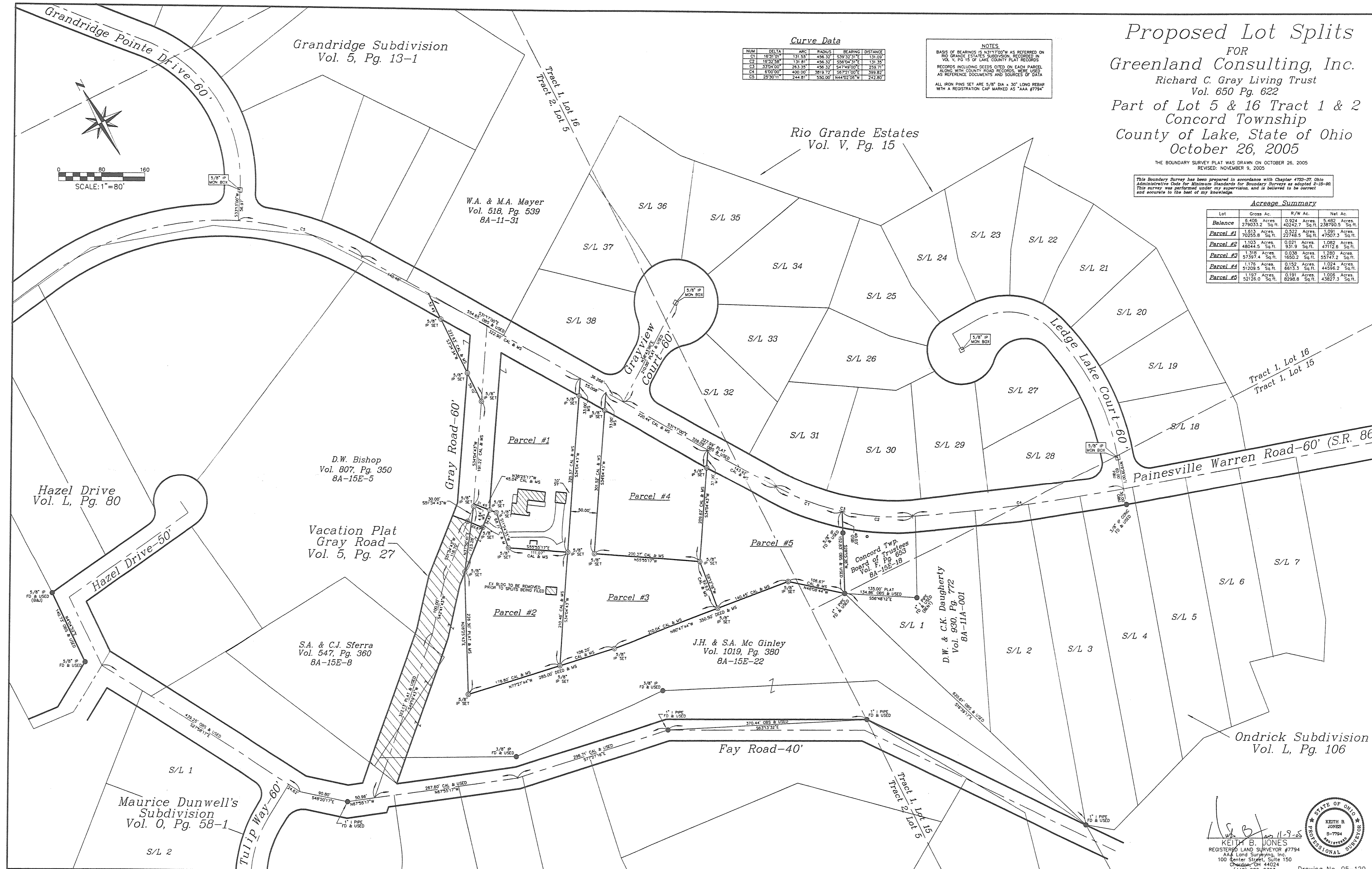
Acree Summary

Lot	Gross Ac.	R/W Ac.	Net Ac.
Balance	5,405 Acres	0,924 Acres	5,482 Acres
	279,032 Sq.ft.	48,242.7 Sq.ft.	2,987,905 Sq.ft.
Parcel #1	1,913 Acres	0,522 Acres	1,991 Acres
	70,255.8 Sq.ft.	22,748.5 Sq.ft.	475,073 Sq.ft.
Parcel #2	1,103 Acres	0,021 Acres	1,092 Acres
	48,044.5 Sq.ft.	931.9 Sq.ft.	471,126 Sq.ft.
Parcel #3	1,318 Acres	0,038 Acres	1,280 Acres
	57,397.4 Sq.ft.	1,650.2 Sq.ft.	557,472 Sq.ft.
Parcel #4	1,176 Acres	0,152 Acres	1,024 Acres
	51,209.5 Sq.ft.	6,613.3 Sq.ft.	445,962 Sq.ft.
Parcel #5	1,197 Acres	0,191 Acres	1,006 Acres
	52,126.0 Sq.ft.	8,298.8 Sq.ft.	438,273 Sq.ft.

Curve Data

NUM	DELTA	ARC	RADIUS	BEARING	DISTANCE
C1	183.0°	131.58'	456.32'	S52°32'31"E	131.00'
C2	167°52'58"	131.81'	456.32'	S56°26'31"E	131.35'
C3	33°34'00"	263.35'	456.32'	S47°49'00"E	259.71'
C4	8°00'00"	490.00'	5819.72'	S87°21'00"E	399.82'
C5	28°30'11"	244.81'	330.00'	N44°02'00"W	242.80'

NOTES
BASIS OF BEARINGS IS N31°17'00"W AS REFERRED ON RIO GRANDE ESTATES SUBDIVISION, RECORDED IN VOL. V, PG. 15 OF LAKE COUNTY PLAT RECORDS.
RECORDS INCLUDING DEEDS CITED ON EACH PARCEL ALONG WITH COUNTY ROAD RECORDS, WERE USED AS REFERENCE DOCUMENTS AND SOURCES OF DATA.
ALL IRON PINS SET ARE 5/8" DIA x 30" LONG REBAR WITH A REGISTRATION CAP MARKED AS "AAA #7794"



KEITH B. JONES
REGISTERED LAND SURVEYOR #7794
AAA Land Surveying, Inc.
100 Center Street, Suite 150
Cincinnati, OH 45224
(440) 286-2393
Drawing No. 05-120