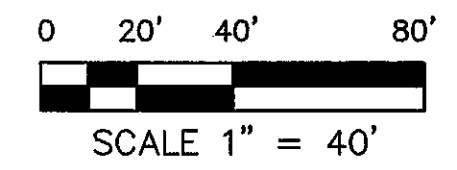
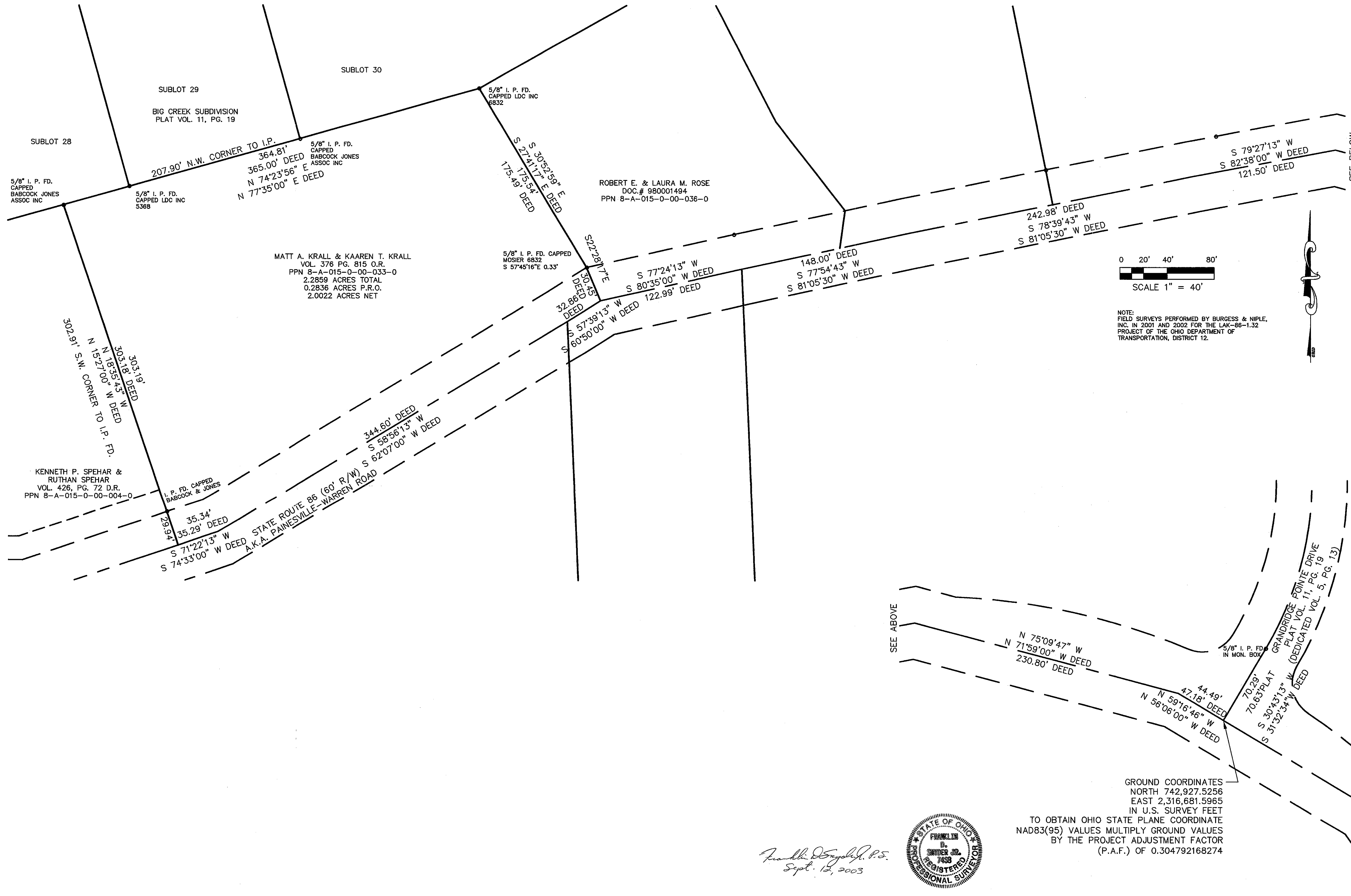


P:\PR30582\CADD\SUBMIT2003.DWG 9-5-03



NOTE:
FIELD SURVEYS PERFORMED BY BURGESS & NIPLE,
INC. IN 2001 AND 2002 FOR THE LAK-88-1.32
PROJECT OF THE OHIO DEPARTMENT OF
TRANSPORTATION, DISTRICT 12.

SEE ABOVE

N 75°09'47" W
N 71°59'00" W DEED
230.80' DEED

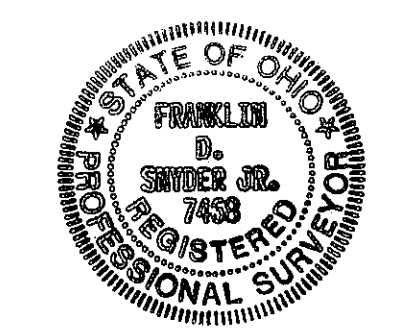
44.49'
47.18' DEED
N 59°16'46" W
N 56°06'00" W DEED

70.29'
70.83' PLAT
S 30°43'13" W
S 31°32'34" W DEED

5/8" I. P. FD.
IN MON. BOX

GROUND COORDINATES
NORTH 742,927.5256
EAST 2,316,681.5965
IN U.S. SURVEY FEET
TO OBTAIN OHIO STATE PLANE COORDINATE
NAD83(95) VALUES MULTIPLY GROUND VALUES
BY THE PROJECT ADJUSTMENT FACTOR
(P.A.F.) OF 0.304792168274

Franklin D. Switzer Jr. P.S.
Sept. 12, 2003



NO.	REVISIONS	DATE	BY	CHK.

Burgess & Niple, Limited PAINESVILLE, OH



**OHIO DEPARTMENT OF TRANSPORTATION
DISTRICT 12**

JOB NO.	30582
DESIGNED BY:	
DRAWN BY:	FDS
CHECKED BY:	
APPROVED BY:	
DATE:	9/04/03

**MAP TO ACCOMPANY JULY 2002 DESCRIPTION
PART OF ORIGINAL CONCORD TOWNSHIP
LOT 5, TRACT 2 IN TOWNSHIP 10, RANGE VIII
OF THE CONNECTICUT WESTERN RESERVE
CONCORD TOWNSHIP, LAKE COUNTY, OHIO**

SCALE:	1" = 40'
SHEET NO.	1
OF	1