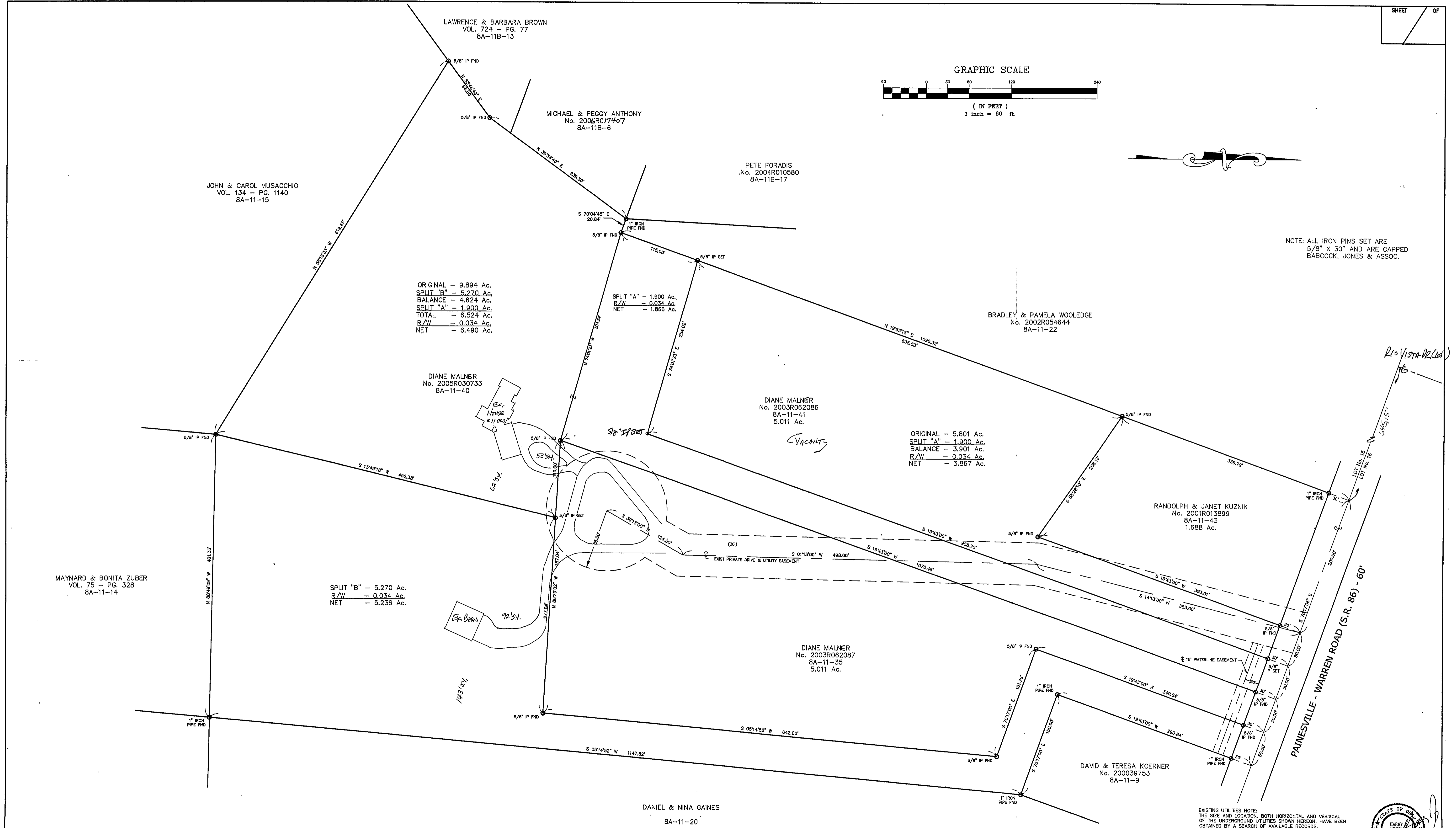
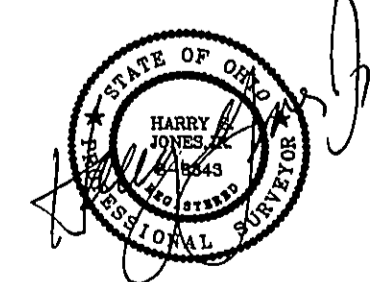


NOTE: ALL IRON PINS SET ARE 5/8" X 30" AND ARE CAPPED BABCOCK, JONES & ASSOC.



Bearings are based upon the centerline of Painesville-Warren Road being South 70°17'06" East and are used to describe angles only.

EXISTING UTILITIES NOTE:  
THE SIZE AND LOCATION, BOTH HORIZONTAL AND VERTICAL OF THE UNDERGROUND UTILITIES SHOWN HEREON, HAVE BEEN OBTAINED BY A SEARCH OF AVAILABLE RECORDS. VERIFICATION BY FIELD OBSERVATION HAS BEEN CONDUCTED WHERE PRACTICAL. HOWEVER, BABCOCK, JONES AND ASSOCIATES, INC. DOES NOT GUARANTEE THE COMPLETENESS NOR ACCURACY THEREOF.



REV NO.	DESCRIPTION	DATE	BY	CHK'D
1	Revised per CC. Ensmeyer	10/22/07	HJ	HJ

**bj** BABCOCK, JONES AND ASSOCIATES, INC  
CIVIL ENGINEERS - SURVEYORS - LAND PLANNERS  
PAINESVILLE OHIO 44077

DATE OCTOBER 2007  
DESIGN BY H.J.  
DRAWN BY B.P.  
APPROVED BY H.J.  
CREW CHIEF W.B.

Lot 15.15  
Twp 15.1  
PLAT OF SURVEY  
FOR  
DIANE MALNER  
PAINESVILLE WARREN ROAD  
LAKE COUNTY  
STATE OF OHIO

SCALE 1"=60'  
JOB NO 90-035  
SHEET 1 OF 1