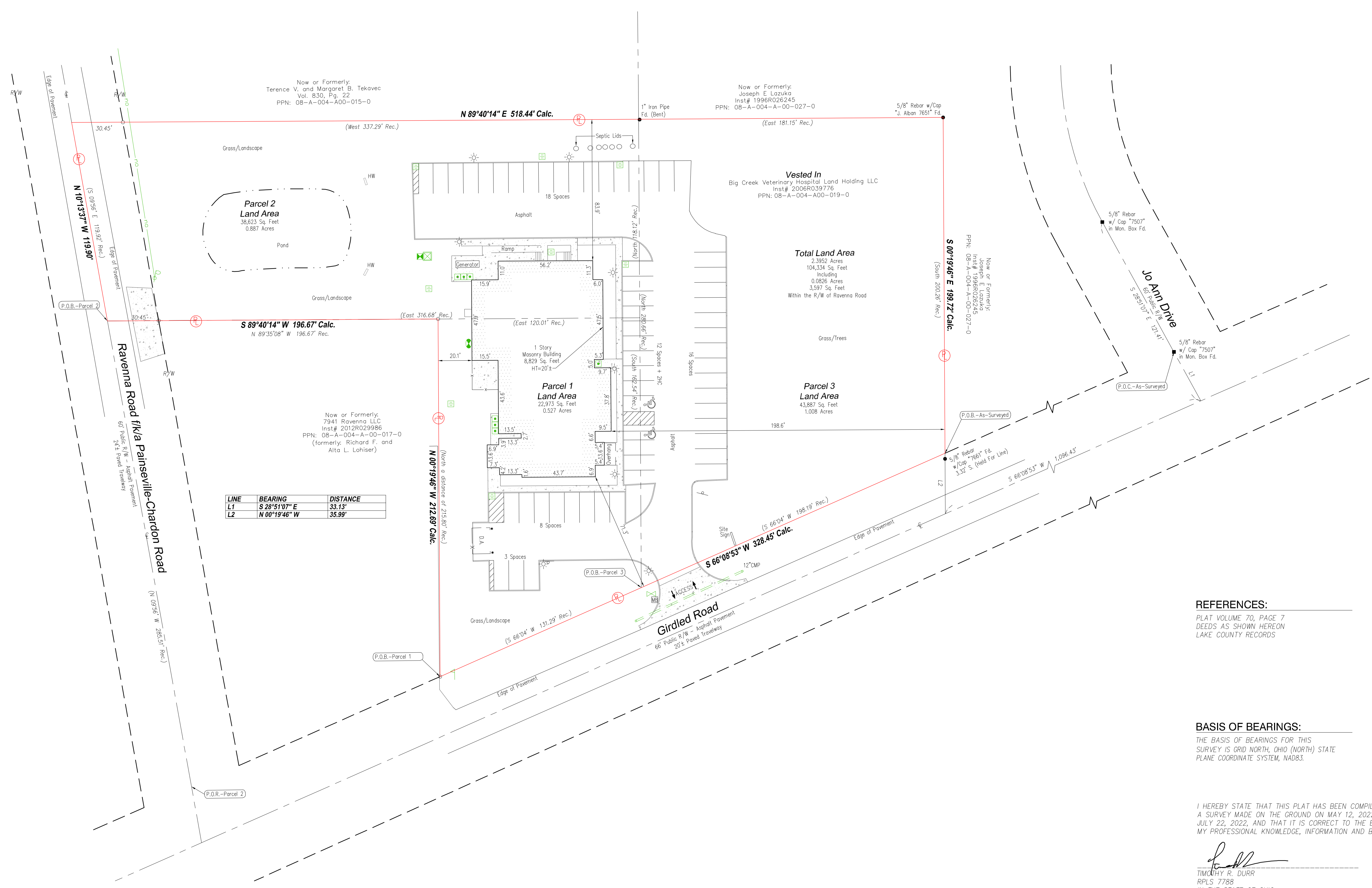


LEGEND

- P.O.B. - Point of Beginning
- P.O.C. - Point of Commencement
- R/W - Right-of-Way
- C.L. - Centerline
- P - Property Line
- - Monumentation Found (as noted)
- - Concrete Monument Found
- - 5/8" Rebar Set
- Calc. - Calculated
- Msd. - Measured
- Rec. - Record
- Water Valve
- Manhole
- Sanitary Manhole
- Clean Out
- Gas Meter
- Gas Marker
- Catch Basin (Square)
- Storm Manhole
- Transformer
- Electric Meter
- Utility Box
- Air Conditioning Unit
- Power Pole
- Light Pole
- Guy Wire
- Overhead Utility Line
- Sign
- Bollard
- Mail Box
- Handicapped Space
- Fence
- Concrete Area
- No Parking Area
- Building Area
- Corrugated Metal Pipe



REFERENCES:
PLAT VOLUME 70, PAGE 7
DEEDS AS SHOWN HEREON
LAKE COUNTY RECORDS

BASIS OF BEARINGS:
THE BASIS OF BEARINGS FOR THIS
SURVEY IS GRID NORTH, OHIO (NORTH) STATE
PLANE COORDINATE SYSTEM, NAD83.

I HEREBY STATE THAT THIS PLAT HAS BEEN COMPILED FROM
A SURVEY MADE ON THE GROUND ON MAY 12, 2022 AND
JULY 22, 2022, AND THAT IT IS CORRECT TO THE BEST OF
MY PROFESSIONAL KNOWLEDGE, INFORMATION AND BELIEF.

Timothy R. Durr
TIMOTHY R. DURR
RPLS 7788
IN THE STATE OF OHIO
PROJECT NO. B-220519

