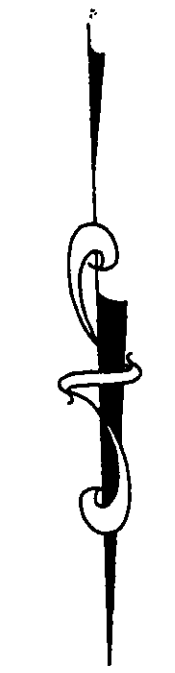
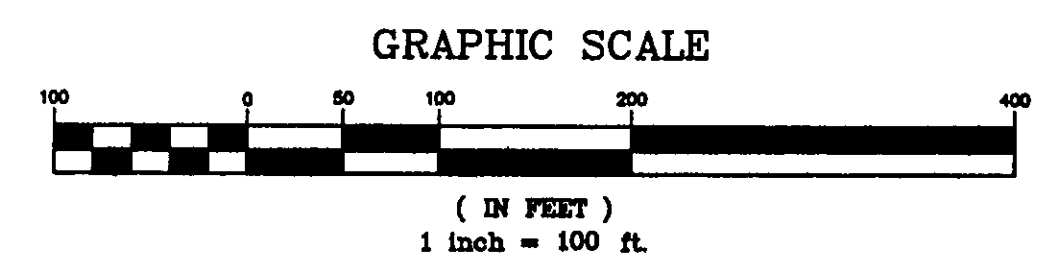


JAYEL ENTERPRISES
VOL. 665 - PG. 617
7A-4-13

N 88°30'00" W 1548.80' (OBS)



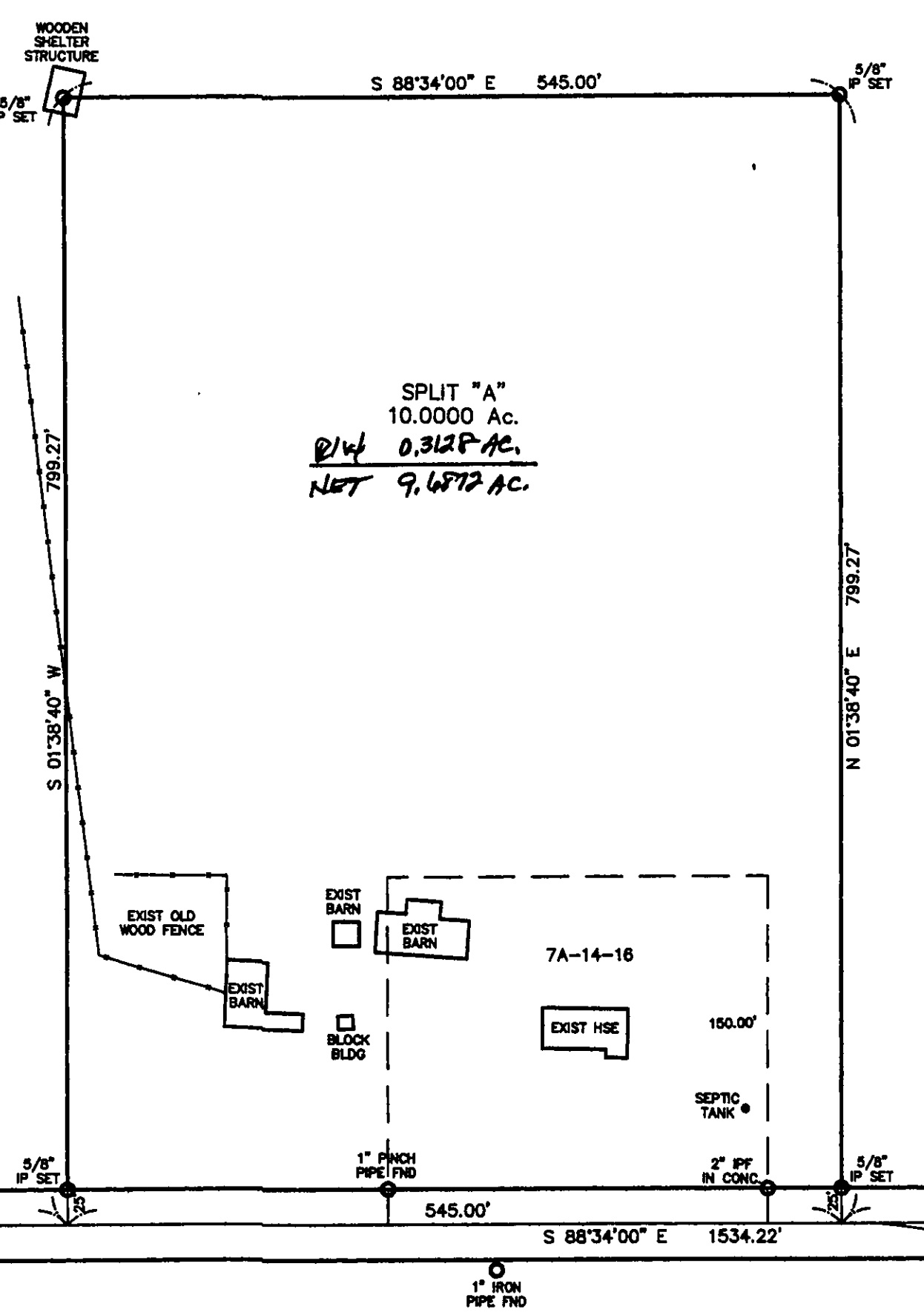
JAYEL ENTERPRISES
VOL. 682 - PG. 85
7A-4-15

JAYEL ENTERPRISES
VOL. 665 - PG. 617
7A-4-13

TOTAL - 60.8829 Ac.
SPLIT "A" - 10.0000 Ac.
BALANCE - 50.8829 Ac.
R14 - 0.312 AC.
NET - 50.5211 AC.

LAKE METRO PARKS
8A-6-7

NOTE: ALL IRON PINS SET ARE
5/8" X 30" AND ARE CAPPED
BABCOCK, JONES & ASSOC.



SPLIT "A"
10.0000 Ac.
R14 0.312 AC.
NET 9.6872 AC.

ANN ROCKOW
7A-4-14

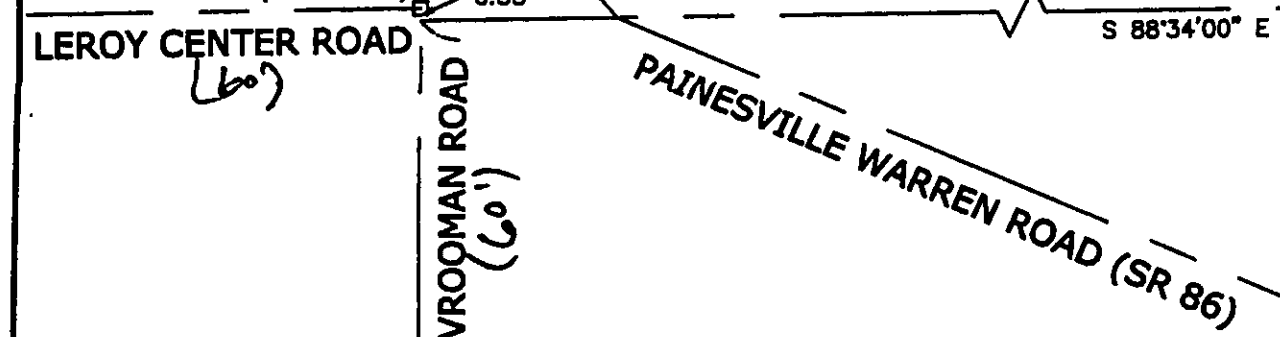
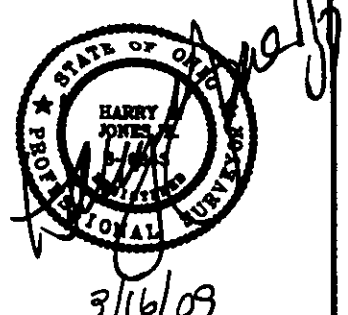
STEVEN & CANDACE PASKAN
VOL. 669 - PG. 477
8A-6-1

STEVEN & CANDACE PASKAN
VOL. 669 - PG. 477
7A-17-1

HUNTOON ROAD - 50'

Bearings are based upon the centerline of Huntoon Road being South 88°34'00" East and are used to describe angles only.

EXISTING UTILITIES NOTE:
THE SIZE AND LOCATION, BOTH HORIZONTAL AND VERTICAL
OF THE UNDERGROUND UTILITIES SHOWN HEREON, HAVE BEEN
OBTAINED BY A SEARCH OF AVAILABLE RECORDS.
VERIFICATION BY FIELD OBSERVATION HAS BEEN CONDUCTED
WHERE PRACTICAL, HOWEVER, BABCOCK, JONES AND ASSOCIATES
INC. DOES NOT GUARANTEE THE COMPLETENESS NOR ACCURACY
THEREOF.



REV. NO.	DESCRIPTION	DATE	BY	CHK'D
1	Revised by L.C. Engineer	3/16/09	HJ	RJ

bj BABCOCK, JONES AND ASSOCIATES, INC
CIVIL ENGINEERS - SURVEYORS - LAND PLANNERS
PAINESVILLE OHIO 44077

DATE	11/25/08
DESIGN BY	H.J.
DRAWN BY	B.P.
APPROVED BY	H.J.
CREW CHIEF	R.B.

Lot 4.17
PLAT OF SURVEY
FOR
WALTER S. LAZUKA
12546 HUNTOON ROAD (P.P.# 7A-4-15)
LAKE COUNTY STATE OF OHIO

SCALE	1"=100'
JOB NO	08-110
SHEET	1
OF	1