

ROBERT A. THOMAS
VOL. 569 - PG. 142
3A-64-7

LOT No. 62
LOT No. 63

LAWRANCE H. BREWSTER, JR.
VOL. 898 - PG. 167
3A-73-1

3A-64-6
2.000 Ac.

ORIGINAL - 2.000 Ac.
SPLIT "A" - 1.000 Ac.
BALANCE - 1.000 Ac.
R/W - 0.159 Ac.
NET - 0.841 Ac.

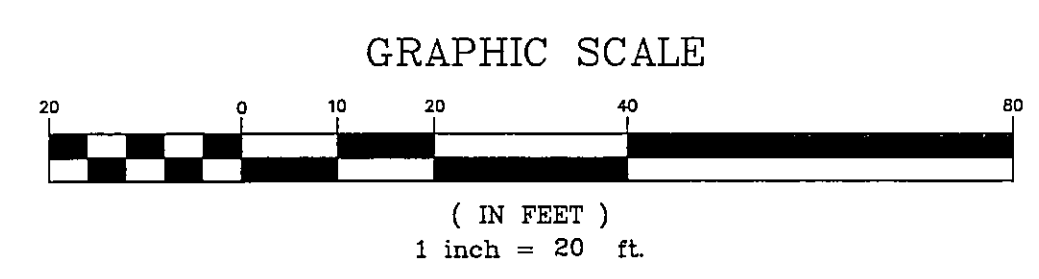
SPLIT "A" - 1.000 Ac.
R/W - 0.034 Ac.
NET - 0.966 Ac.

ROBERT A. THOMAS
VOL. 569 - PG. 142
3A-64-7

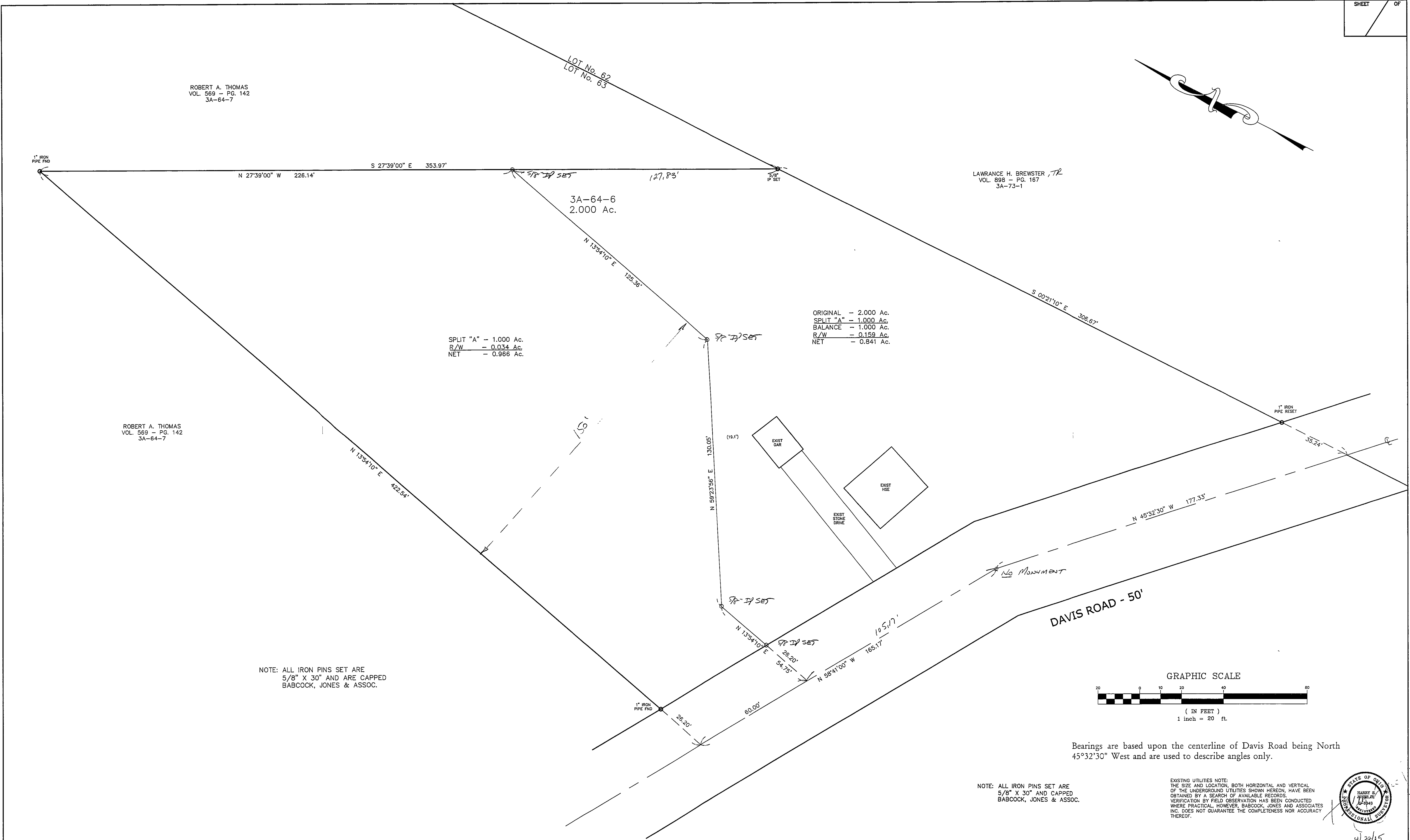
NOTE: ALL IRON PINS SET ARE
5/8" X 30" AND ARE CAPPED
BABCOCK, JONES & ASSOC.

NOTE: ALL IRON PINS SET ARE
5/8" X 30" AND ARE CAPPED
BABCOCK, JONES & ASSOC.

EXISTING UTILITIES NOTE:
THE SIZE AND LOCATION, BOTH HORIZONTAL AND VERTICAL
OF THE UNDERGROUND UTILITIES SHOWN HEREON, HAVE BEEN
OBTAINED BY A SEARCH OF AVAILABLE RECORDS.
VERIFICATION BY FIELD OBSERVATION HAS BEEN CONDUCTED
WHERE PRACTICAL. HOWEVER, BABCOCK, JONES AND ASSOCIATES
INC. DOES NOT GUARANTEE THE COMPLETENESS NOR ACCURACY
THEREOF.



Bearings are based upon the centerline of Davis Road being North
45°32'30" West and are used to describe angles only.



REV NO.	DESCRIPTION	DATE	BY	CHK'D
1	REVISIONS P.E.L.L.C ENGINEER	4/22/15	HJ	HT

bj BABCOCK, JONES AND ASSOCIATES, INC
CIVIL ENGINEERS - SURVEYORS - LAND PLANNERS
PAINESVILLE OHIO 44077

DATE 11/16/04
DESIGN BY H.J.
DRAWN BY B.P.
APPROVED BY H.J.
CREW CHIEF W.B.

PLAT OF SURVEY
FOR
RICK HERZOG
DAVIS ROAD (P.P.# 3A-64-6)
PERRY TOWNSHIP LAKE COUNTY STATE OF OHIO

SCALE 1"=20'
JOB NO 04-288
SHEET 1 OF 1