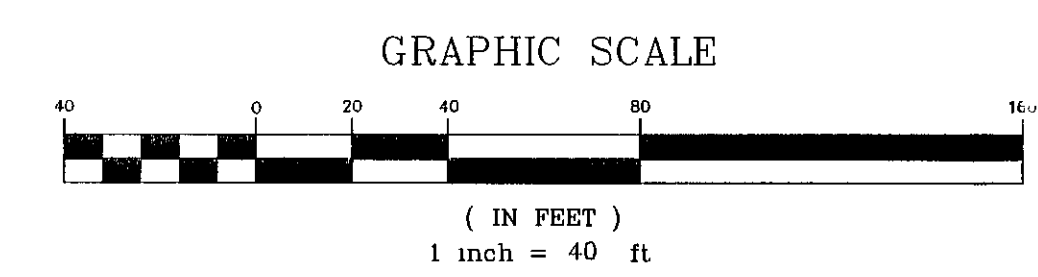
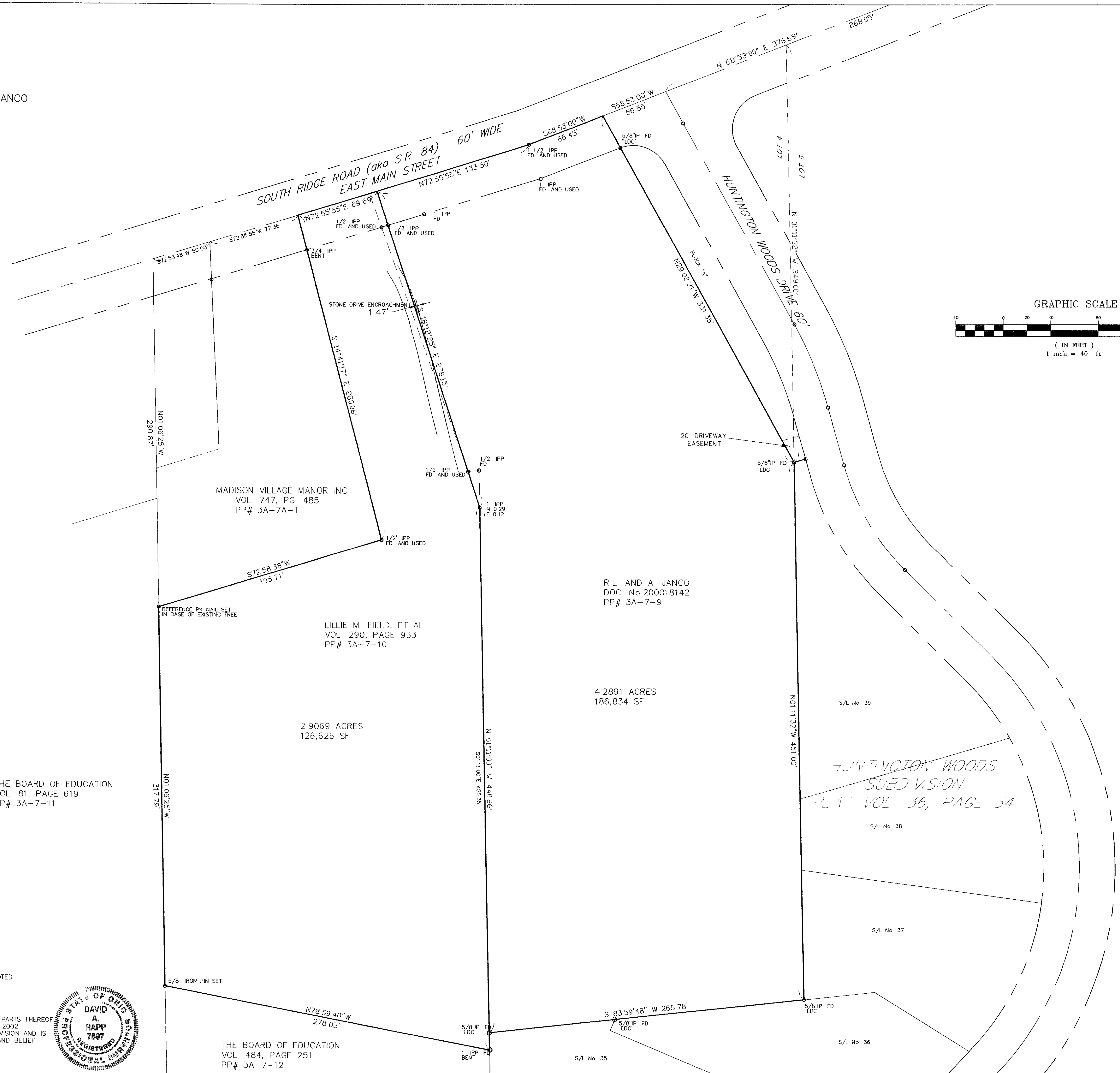


BOUNDARY SURVEY
 OF LANDS CONVEYED TO LILLIE M FIELD, ET AL AND RICHARD L JANCO
 KNOWN AS A PART OF LOT NUMBER 4, TRACT 1
 IN THE VILLAGE OF MADISON, OHIO
 PP # 03A-007-09 AND 10

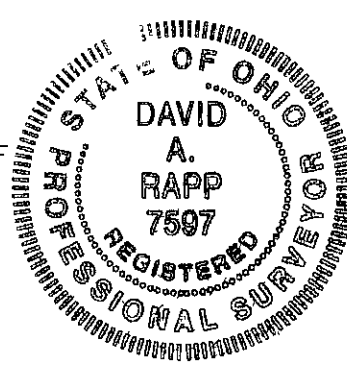


Bearings are to an assumed meridian and are used to denote angles only

THE BOARD OF EDUCATION
 VOL 81, PAGE 619
 PP# 3A-7-11

SOURCES
 DEEDS AND PLATS AS NOTED
 STATE ROUTE 84 PLANS

DISTANCES ARE GIVEN IN FEET AND DECIMAL PARTS THEREOF
 UNLESS OTHERWISE NOTED SURVEYED JUNE 2002
 THIS PLAT WAS PREPARED UNDER MY SUPERVISION AND IS
 CORRECT TO THE BEST OF MY KNOWLEDGE AND BELIEF



David A. Rapp 2/15/02
 DAVID A. RAPP PS No 7597

COR CONSULTANTS, INC 23 S FOREST ST GENEVA, OHIO 44041 4402 466-8085 FAX 4402 466-0706	DATE	JUNE 2002	
	DRAWN BY:	DAR	
	CHECKED BY:	DAR	
	APPROVED BY:	DAR	1
	PS No	7597	1

THE BOARD OF EDUCATION
 VOL 484, PAGE 251
 PP# 3A-7-12