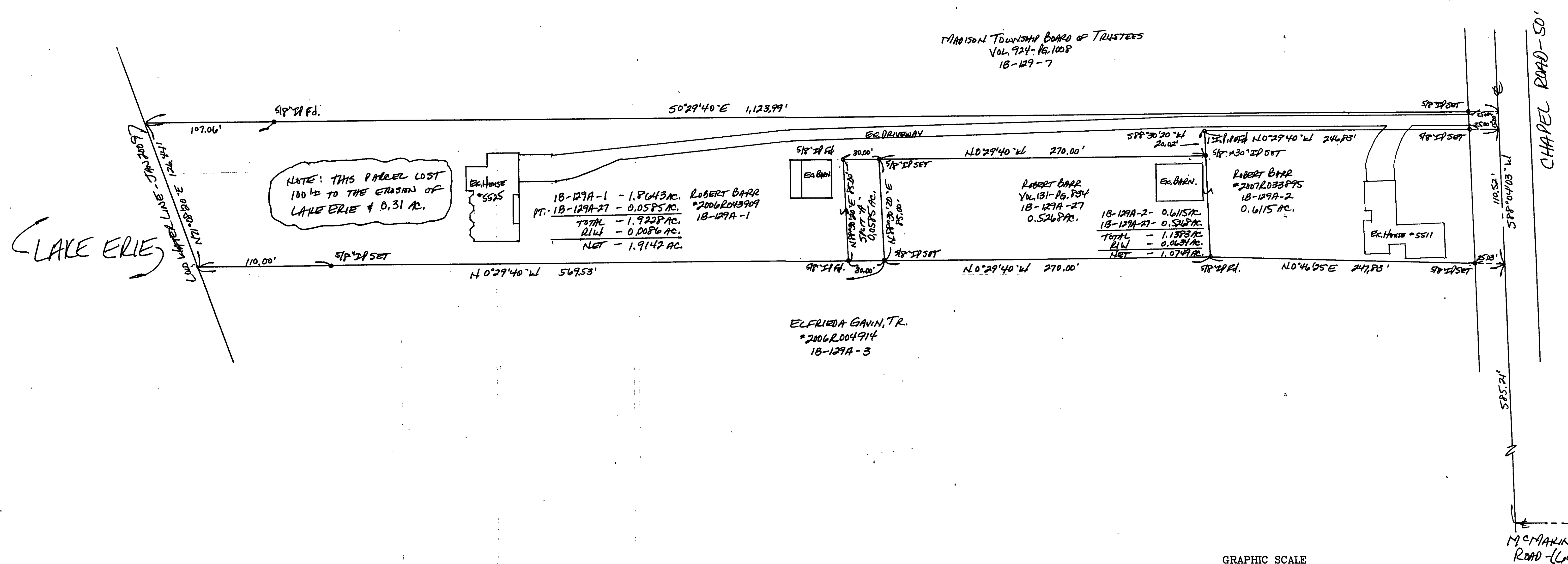


MADISON TOWNSHIP BOARD OF TRUSTEES  
Vol. 924-16, 1008  
18-129-7



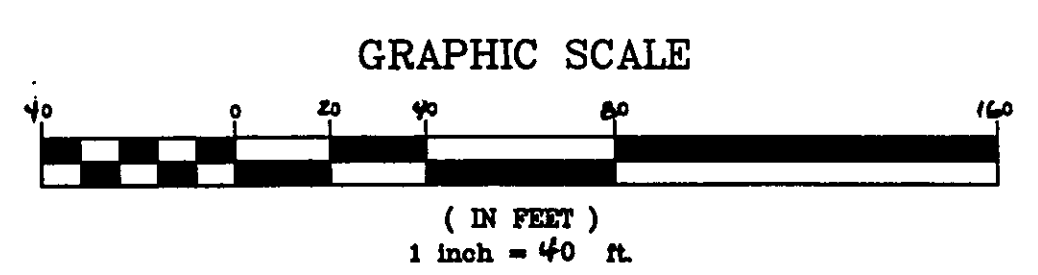
NOTE: THIS PARCEL LOST  
100'± TO THE EROSION OF  
LAKE ERIE ± 0.31 AC.

18-129A-1 - 1.8643 AC. ROBERT BARR  
PT. 18-129A-27 - 0.0585 AC. #2006R043909  
TOTAL - 1.9228 AC. 18-129A-1  
RIW - 0.0086 AC.  
NET - 1.9142 AC.

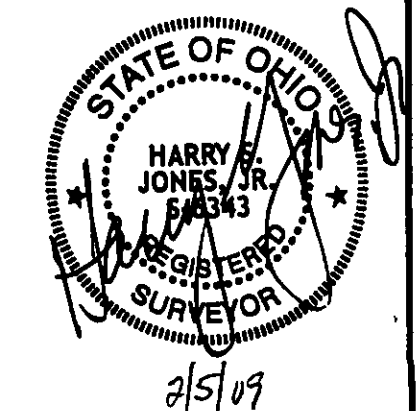
18-129A-2 - 0.6115 AC.  
18-129A-27 - 0.5268 AC.  
TOTAL - 1.1383 AC.  
RIW - 0.0634 AC.  
NET - 1.0749 AC.

ROBERT BARR  
#2007R033895  
18-129A-2  
0.6115 AC.

ELFRIDA GAVIN, TR.  
#2006R004914  
18-129A-3



Bearings are based upon the centerline of Chapel Road being North 88°04'03" East and are used to describe angles only.



REV. NO.	DESCRIPTION	DATE	BY	CHKD.
1	Revised P.L.C. ENGINEER	2/5/09	HV	HV

**bj** BABCOCK, JONES AND ASSOCIATES, INC.  
CIVIL ENGINEERS - SURVEYORS - LAND PLANNERS  
PAINESVILLE OHIO 44077

DATE	JANUARY 2009	PLAT OF SURVEY	SCALE
DESIGN BY	HV	FOR	1" = 40'
DRAWN BY	HV	TRACT No. 4	JOB NO. 08-117
APPROVED BY	OTV	MADISON TOWNSHIP LAKE COUNTY OHIO	SHEET 1 OF 1