

Plat of Lot Splits

For: Glen L. Gnagy, Tr.

Situated in the Township of Madison, County of Lake and State of Ohio and known as being part of Original Lot 1, Tract 3,

DECEMBER 2022 SCALE 1"=60'

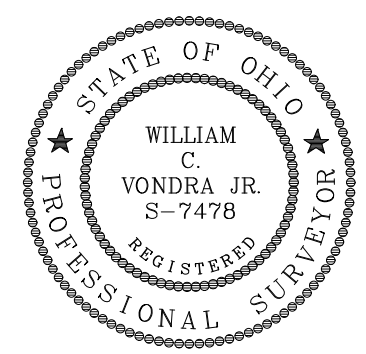
Acreages:

Split AA: 0.1004 Ac. (4,372 sq.ft.) to be combined to PPN: 01B-113C-00-041-0
 Split BB: 0.1002 Ac. (4,364 sq.ft.) to be combined to PPN: 01B-113C-00-042-0
 Split CC: 0.1002 Ac. (4,364 sq.ft.) to be combined to PPN: 01B-113C-00-043-0
 Split DD: 0.1002 Ac. (4,364 sq.ft.) to be combined to PPN: 01B-113C-00-037-0
 Split EE: 0.1002 Ac. (4,364 sq.ft.) to be combined to PPN: 01B-113C-00-038-0
 Split FF: 0.1002 Ac. (4,364 sq.ft.) to be combined to PPN: 01B-113C-00-039-0
 Split GG: 0.1002 Ac. (4,365 sq.ft.) to be combined to PPN: 01B-113C-00-040-0
 Split HH: 0.1731 Ac. (7,539 sq.ft.) to be combined to PPN: 01B-113C-00-031-0
 Split KK: 0.1730 Ac. (7,534 sq.ft.) to be combined to PPN: 01B-113C-00-032-0
 Split JJ: 0.3162 Ac. (13,774 sq.ft.) to be combined to PPN: 01B-113C-00-025-0
 Split JJ: 1.3535 Ac. (58,960 sq.ft.) to C/L 1.2996 Ac. (56,611 sq.ft.) to R/W to be combined to PPN: 01B-113C-00-020-0
 Rem.-022-0: 0.9410 Ac. (40,992 sq.ft.) to C/L 0.8837 Ac. (38,492 sq.ft.) to R/W
 JJ-SP: 0.9593 Ac. (41,789 sq.ft.) to C/L 0.9009 Ac. (39,242 sq.ft.) to R/W
 JJ-REM: 0.9628 Ac. (41,938 sq.ft.) to C/L 0.9043 Ac. (39,391 sq.ft.) to R/W

CERTIFICATION

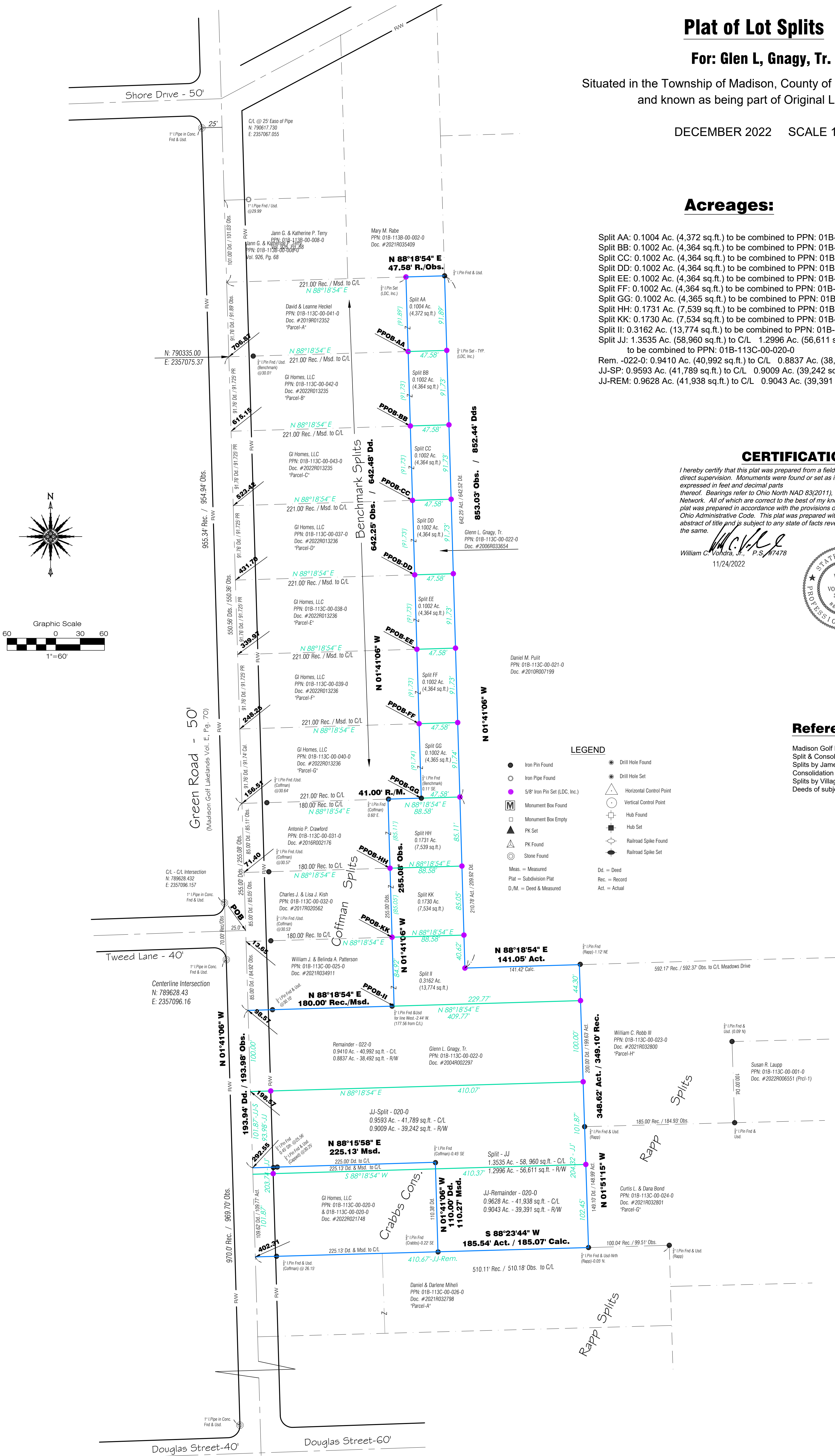
I hereby certify that this plat was prepared from a field survey made under my direct supervision. Monuments were found or set as indicated. Dimensions are expressed in feet and decimal parts thereof. Bearings refer to Ohio North NAD 83(2011), Geoid 12B, ODOT VRS Network. All of which are correct to the best of my knowledge and belief. This plat was prepared in accordance with the provisions of Chapter 4733-37 of the Ohio Administrative Code. This plat was prepared without the benefit of an abstract of title and is subject to any state of facts revealed by an examination of the same.

William C. Vondra, Jr., P.S.#7478
 11/24/2022



References:

Madison Golf Lakelands Subd. Vol. E, Pg. 68
 Split & Consolidations by David Rapp in 2021
 Splits by James Ziemba in 2006
 Consolidation by Crabbs surveying in 2022
 Splits by Village Surveying (Tom Coffman) in 2003
 Deeds of subject property and adjoining



LEGEND

- Iron Pin Found
- Iron Pipe Found
- 5/8" Iron Pin Set (LDC, Inc.)
- Monument Box Found
- Monument Box Empty
- ▲ PK Set
- △ PK Found
- Stone Found
- Meas. = Measured
- Plat = Subdivision Plat
- D./M. = Deed & Measured
- Drill Hole Found
- Drill Hole Set
- Horizontal Control Point
- Vertical Control Point
- Hub Found
- Hub Set
- Railroad Spike Found
- Railroad Spike Set
- Dd. = Deed
- Rec. = Record
- Act. = Actual