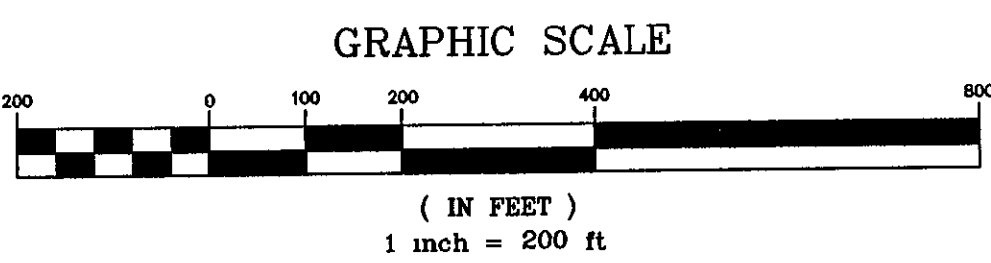
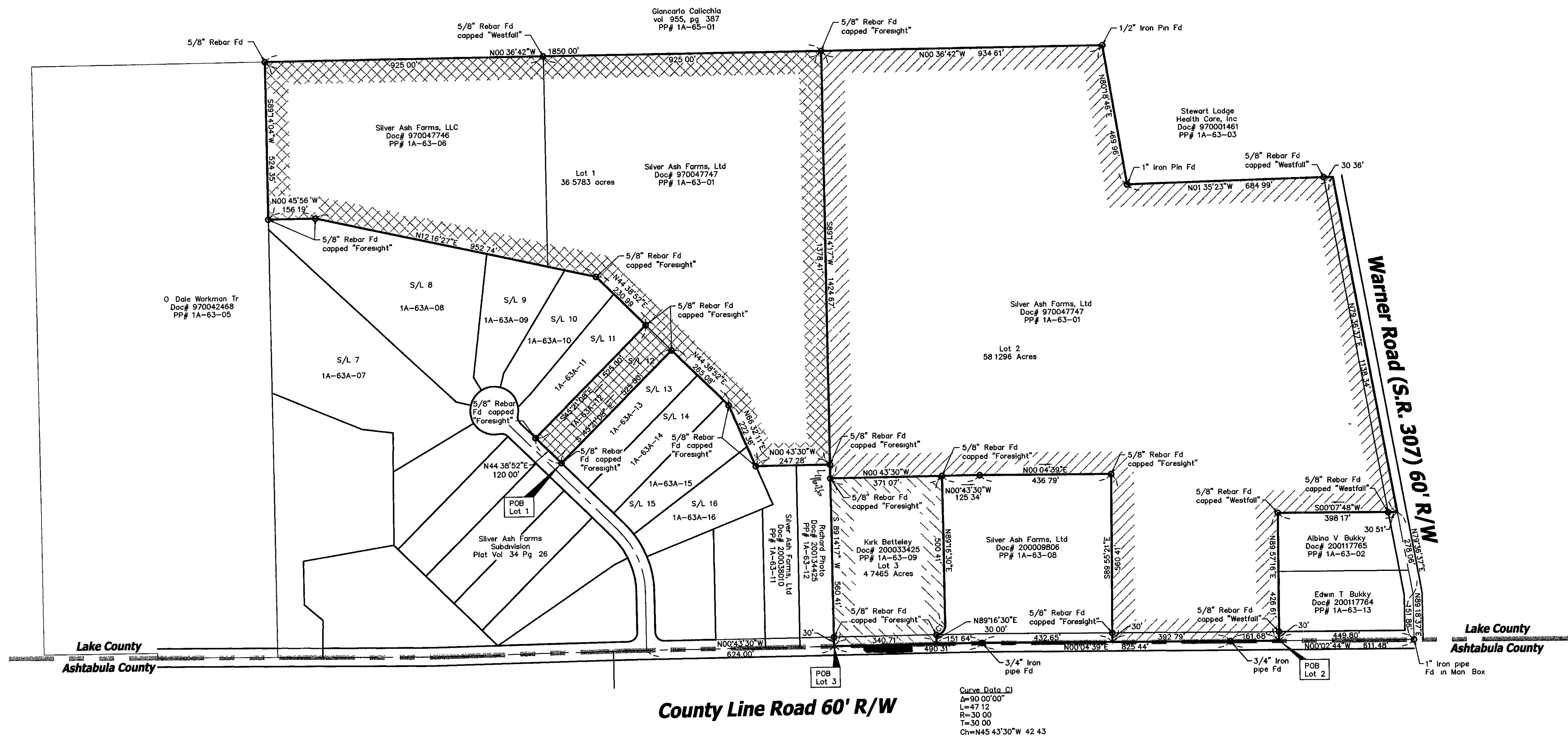


Bearings are to be assumed meridian and to denote angles only



Curve Data C
A=90 00'00"
L=47 12'
R=30 00'
T=30 00'
Ch=N45 43'30"W 42.43'



This Plat was prepared without the benefit of an abstract of Title and is subject to any state of facts revealed by an examination of the same
This Plat represents a Survey which meets the minimum standards for a Boundary Survey in The State of Ohio as specified in the Administrative Code Chapter 4733-37 Surveyed in January, 2003 by Foresight Engineering Group, Inc. under the supervision of Steven N. Roessner, P.S. #7070
Steven N. Roessner, P.S. #7070
Foresight Engineering Group, Inc.
1/13/03 Date

Foresight Engineering Group
Engineers & Surveyors
440 286-1010
440 286-1034 fax
Cleveland, Ohio 44024

SCALE	Horz. 1" = 200'
Ver. None	
FILE NAME	I:\Bet19907\Cons Plat
DATE	January 13, 2003

REVISIONS

Silver Ash Farms, Ltd.
Buky Property Lot 1, Tract 14
Madison Township - Lake County - Ohio
Plat of Survey

SHEET NO

1/1

I:\askip\1802\19907\Cons Plat.dwg, 01/13/03 09:27:27 AM, Copyright Foresight Engineering Group, Inc.