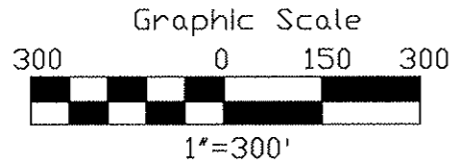


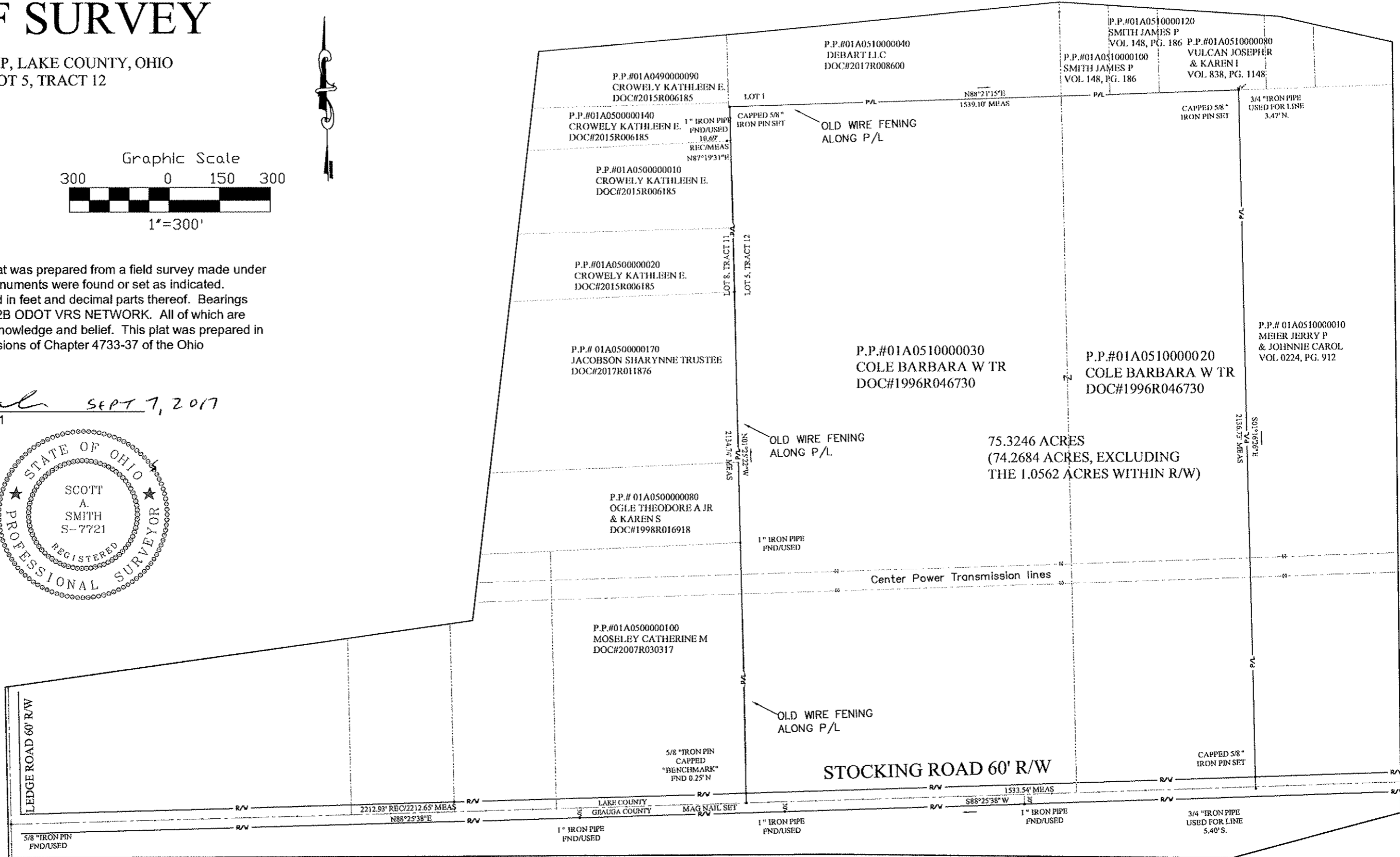
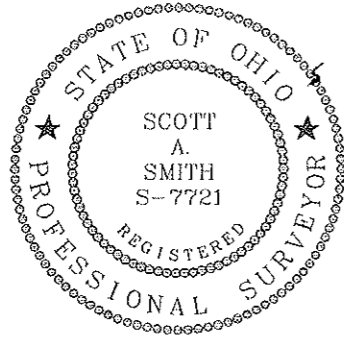
PLAT OF SURVEY

MADISON TOWNSHIP, LAKE COUNTY, OHIO
PART OF LOT 5, TRACT 12



I hereby certify that this plat was prepared from a field survey made under my direct supervision. Monuments were found or set as indicated. Dimensions are expressed in feet and decimal parts thereof. Bearings refer to NAD 83 GEOID 12B ODOT VRS NETWORK. All of which are correct to the best of my knowledge and belief. This plat was prepared in accordance with the provisions of Chapter 4733-37 of the Ohio Administrative Code.

Scott A. Smith SEPT 7, 2017
Scott A. Smith, P.S. # 7721



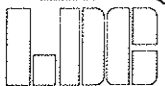
L.D.C. Inc. d.b.a.



LAND DESIGN consultants

www.LDCinc.net

ENGINEERS · PLANNERS · SURVEYORS



9025 Osborne Drive Mentor, Ohio 44060
TEL: (440) 255-8463 (440) 951-LAND
FAX: (440) 255-9575