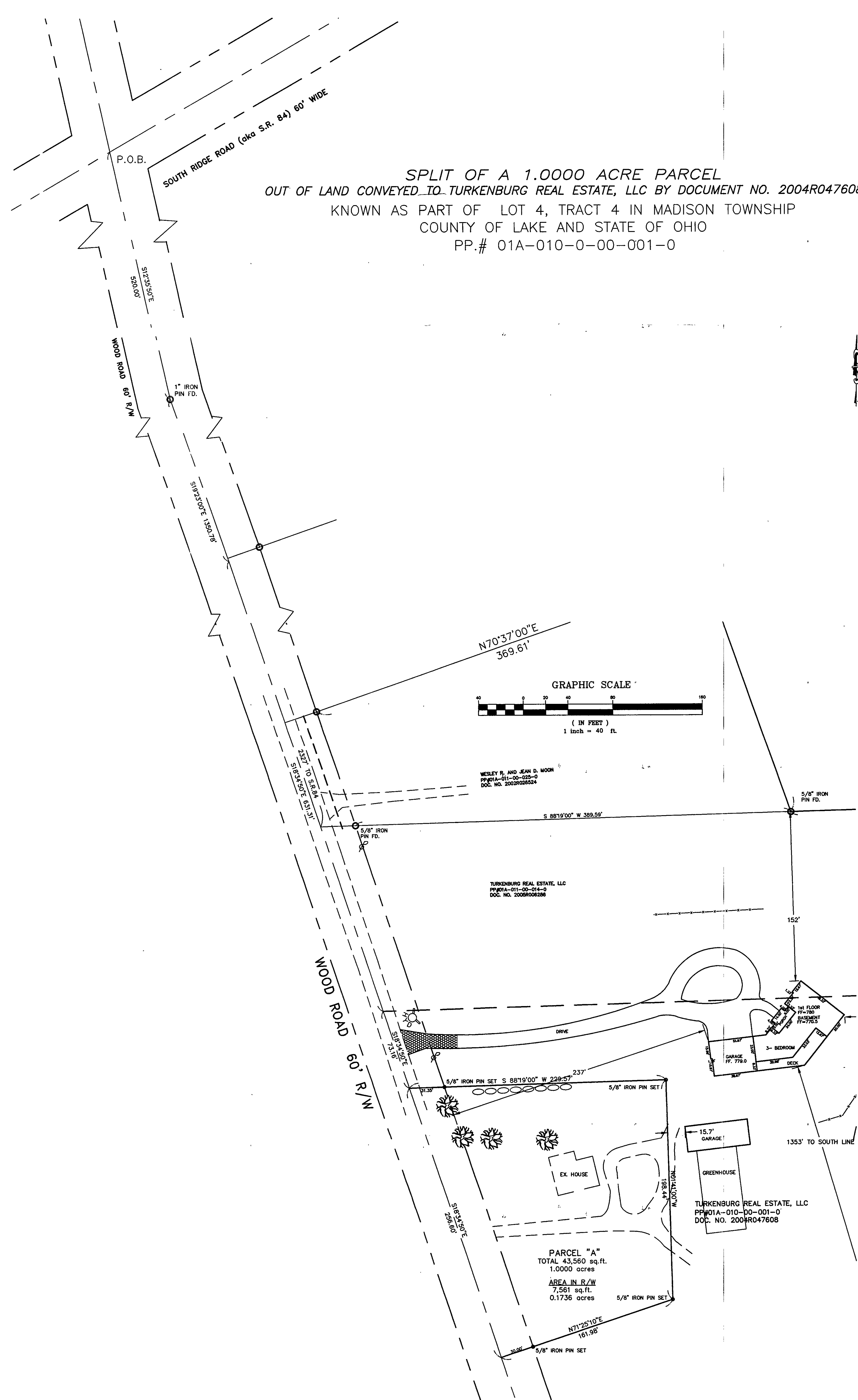
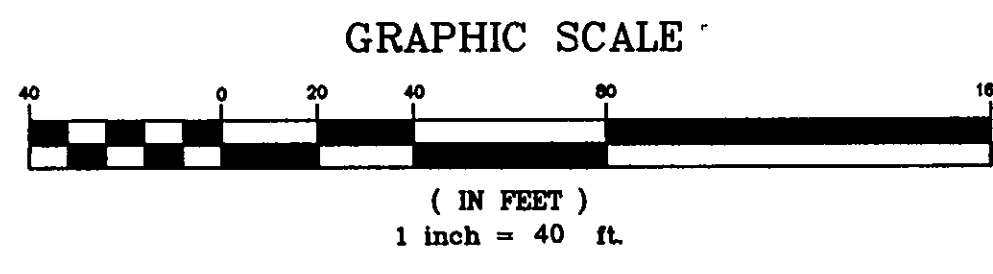


**SPLIT OF A 1.0000 ACRE PARCEL**  
**OUT OF LAND CONVEYED TO TURKENBURG REAL ESTATE, LLC BY DOCUMENT NO. 2004R047608**  
 KNOWN AS PART OF LOT 4, TRACT 4 IN MADISON TOWNSHIP  
 COUNTY OF LAKE AND STATE OF OHIO  
 PP.# 01A-010-0-00-001-0



Bearings are to an assumed meridian and are used to denote angles only.



WESLEY R. AND JEAN D. MOON  
 PP#01A-011-00-025-0  
 DOC. NO. 2002R028524

TURKENBURG REAL ESTATE, LLC  
 PP#01A-011-00-014-0  
 DOC. NO. 2005R008288

TURKENBURG REAL ESTATE, LLC  
 PP#01A-010-00-001-0  
 DOC. NO. 2004R047608

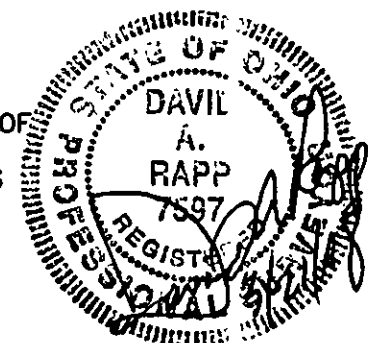
**PARCEL "A"**  
 TOTAL 43,560 sq.ft.  
 1.0000 acres  
**AREA IN R/W**  
 7,561 sq.ft.  
 0.1736 acres

SOURCES:  
 DEEDS AND PLATS AS NOTED

ALL IRON PINS SET (30" OF LENGTH AND 5/8" DIAMETER) ARE IDENTIFIED BY A PLASTIC CAP BEARING THE IMPRINT "7597"

DAVID RAPP SERVICES 3406 DAYTON ROAD MADISON, OHIO 44057 440-982-1617 FAX 440-429-1606	DATE: MA CH, 2008 DRAWN BY: DAR CHECKED BY: DAR APPROVE BY: DAR PS No. 7 97	D28010 1 1
-------------------------------------------------------------------------------------------------	-----------------------------------------------------------------------------------------	---------------

DISTANCES ARE GIVEN IN FEET AND DECIMAL PARTS THEREOF UNLESS OTHERWISE NOTED. SURVEYED MARCH, 2008. THIS PLAT WAS PREPARED UNDER MY SUPERVISION AND IS CORRECT TO THE BEST OF MY KNOWLEDGE AND BELIEF



DAVID A. RAPP P.S. No. 7597