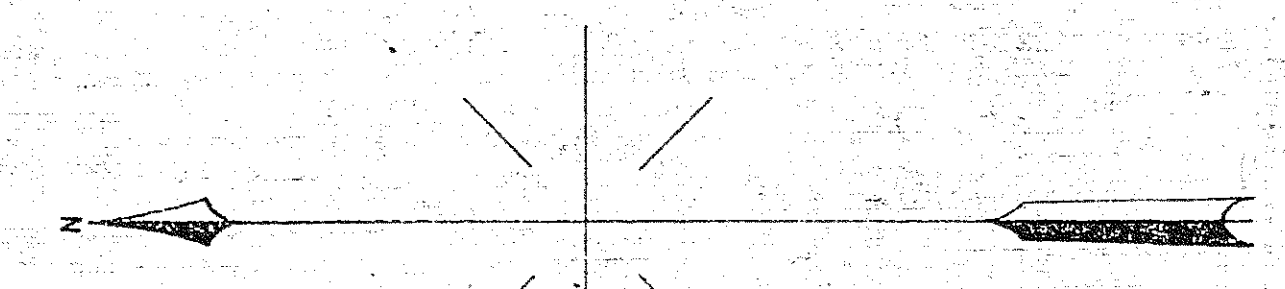


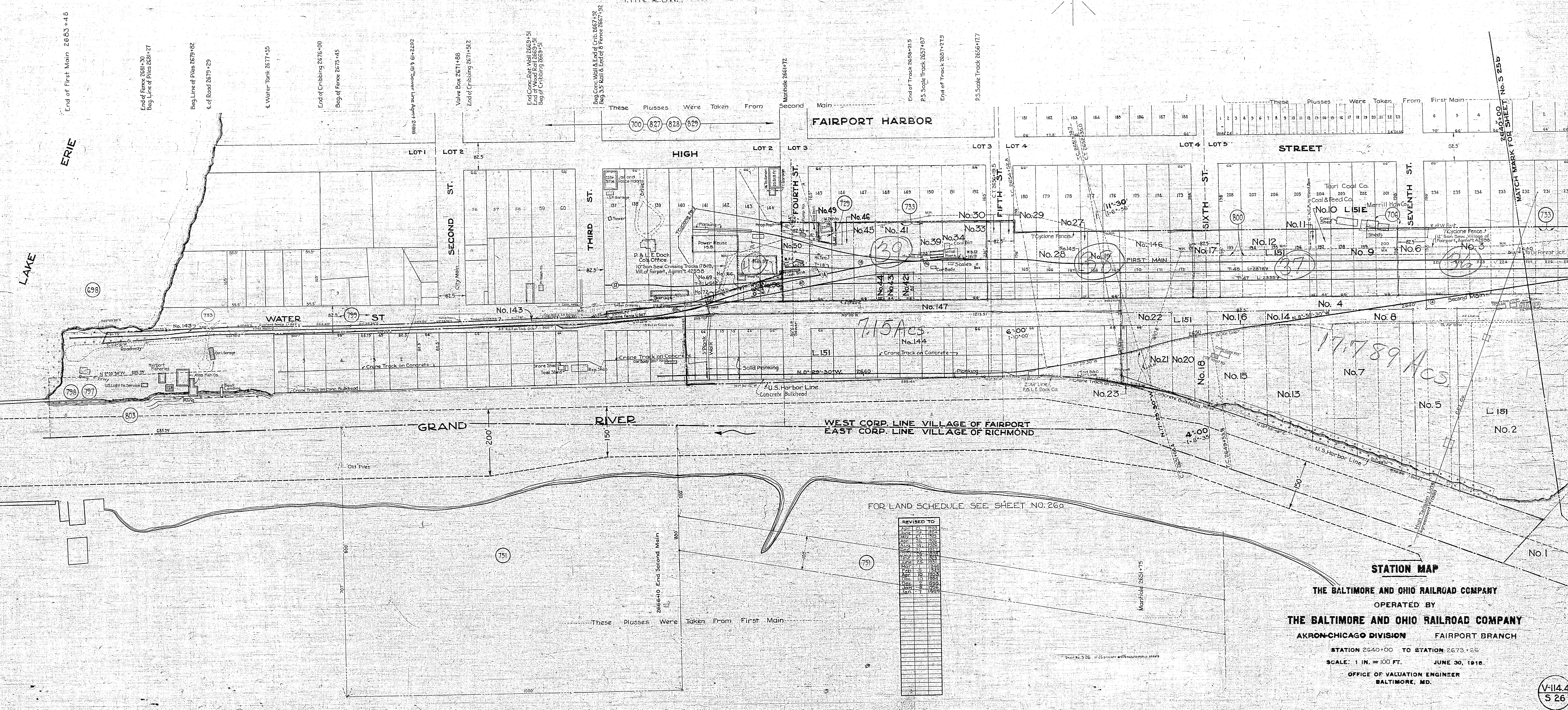
VILLAGE OF FAIRPORT
LAKE CO., OHIO
PAINESVILLE TWP.
T.I.I.N.-R.B.W.



AUTHORITY	DATE INSTALLED OR RETIRED	DESCRIPTION
C-15249 A.F.E. 5209	Installed Aug. 15, 1916	Team track L 151 (17) P.S. at station 2662+00, extended 225 ft. New length 541 ft. Located at Fairport Harbor, O.
C-21740 A.F.E. 5209	Completed July 6, 1920 See A.F.E. 12756	The following track changes were made in Fairport Yard: disconnected track L 151 (23) has been relocated and shortened 85; new length 565, east end new opposite station 2639+50 now used as a wheel track; L 151 (25) extended 154 and shifted on stub end, new length 1059, P.S. at station 2634+25; removal of 467' from stub end of T-L 151 (22), new length 1024, P.S. in T-L 151 (25) opposite station 2630+18; removal of disconnected tracks L 151 (7) L 231 and L 151 (8) L 227, L 151 (7) was located on right and L 151 (8) on left of former end of T-L 151 (22); construction of a connection 111' in length including a No. 7 turnout, Railroad Company's portion of new track L 151 (26), total length 599', P.S. opposite station 2649+50.2 in T-L 151 (26); removal of 159' from stub end of T-L 151 (26) new length 1360', P.S. at station 2649+17.9; the first main track has been extended 370' from station 2679+66 to station 2677+44. All the above plusses are referred to first main track. See sheets 2739 and 5252 for other work done under this authority.
C-22611 A.F.E. 5607	Installed May 27, 1924	Installation of 1420' of 1/2" compressed air line beginning at a point 103' left of sta 2639+80 (the main running fence) and running in a northerly direction along track 34 and first main track to sta. 2632+20, thence west 30' to concrete bulkhead thence north along bulkhead 120' to connection with air line of P.A.L.E. Dock Co. Also 40' of 1" air line from 50' left sta. 2641+70.
C-25948 A.F.E. 8906	Installed Nov. 13, 1925	Acquisition of parcels No. 129, 150 & 151, on right of station 2649+02. For description see Land Schedule. Parcel No. 151 to be improved with a 2.5 ft. Hoistery, 1.5 ft. garage, 1.5 ft. Wash house and a fire shed.
None Prepared	June 1924	One story frame supply shed, size 9'x14, opposite station 2641+65 rebuilt into 12'x22' blacksmith shop.
C-25245 A.F.E. 8156	Retired August 27, 1925 See A.F.E. 12726	Removal of 650' of T-L 151 (5) including No. 8 turnout, P.S. formerly to left of sta. 2651+35. Remainder disposed of under C-22799. Removal of 122' including No. 7 turnout from west end of T-L 151 (5), P.S. formerly to left of sta. 2652+31, track now 220' long.
C-23422 A.F.E. 6340	Retired Sept. 21, 1922	Removal of Kover 57-58, L-167 including #7 & #8 turnouts, P.S. left of First Main station 2644+20 between tracks L 151 (5) and L 151 (5)B. Removal of 90' of T-L 151 (4) including a turnout of T-L 151 (4) P.S. formerly left of station 2646+29.2. Remaining portion of west end of T-L 151 (4) reconnected to T-L 151 (3), new length 160', P.S. at station 2646+02.6. New length of T-L 151 (4) is 537'.
C-25906 A.F.E. 8061	Completed February 27, 1923	Acquisition of Parcel No. 127 on right of sta. 2674+40. See land schedule.
C-22799 A.F.E. 6064	Installed August 15, 1924	Track changes in Fairport Yard. For description see schedule, Map 25a.
C-35439 A.F.E. 17709	Retired July 3, 1930	Retirement of Buildings, 250' on right of sta. 2669+69.

AUTHORITY	DATE INSTALLED OR RETIRED	DESCRIPTION
C-26954 A.F.E. 9799	Installed Mar. 25, 1926	Acquisition of parcels No. 132, 133 and 134 located to right of station 2649+50. For description see Land Schedule.
C-26953 A.F.E. 9799	Completed June 25, 1925	Detachment of plank platform 21 1/2' x 8 1/2' between tracks 51 and 52 to left of station 2640+00; and installation in same location of 2" timber material bars each 25'x16" and the following plank platform forms 1-5x11', 4-5x12' and 2-7x9'.
C-28026 A.F.E. 10700	Consummated Sept. 24, 1926	Acquisition of Parcel No. 135. See Land Schedule.
C-2804 A.F.E. 10791	Consummated Nov. 26, 1925	Acquisition of Parcel No. 136. See Land Schedule.
C-31061 A.F.E. 13502	Completed May 5, 1924	Changes in Fairport Yard Sta. 2639+00 to 2644+75.
C-31022 A.F.E. 13726	Completed May 15, 1928 See A.F.E. 35209 & 8156	Track changes P.A.L.E. Dock Co. Sta. 2630+90 to sta. 2635+19.6.
C-33016 A.F.E. 15483	Completed Mar. 22, 1930	Right of Way Fence, P.A.L.E. Dock Co., 2650+70 on right to 2664+75 on right. See also Map S-25b.
C-34757 A.F.E. 16124	Completed Apr. 2, 1930	Retirement of track L 151 (20) and construction of track L 151 (25). Length 655'.

CONTINUED ON REAR LIST.



REVISED TO	DATE
Apr. 1, 1923	
May 1, 1925	
Aug. 1, 1925	
Aug. 1, 1926	
Nov. 1, 1927	
Jan. 1, 1928	
Apr. 1, 1928	
May 1, 1928	
Aug. 1, 1928	
Jan. 1, 1929	
Mar. 1, 1929	
Apr. 1, 1929	
May 1, 1929	
Jun. 1, 1929	
Jul. 1, 1929	
Aug. 1, 1929	
Sep. 1, 1929	
Oct. 1, 1929	
Nov. 1, 1929	
Dec. 1, 1929	
Jan. 1, 1930	

STATION MAP
THE BALTIMORE AND OHIO RAILROAD COMPANY
OPERATED BY
THE BALTIMORE AND OHIO RAILROAD COMPANY
AKRON-CHICAGO DIVISION FAIRPORT BRANCH
STATION 2640+00 TO STATION 2673+66
SCALE: 1 IN. = 100 FT. JUNE 30, 1918
OFFICE OF VALUATION ENGINEER
BALTIMORE, MD.