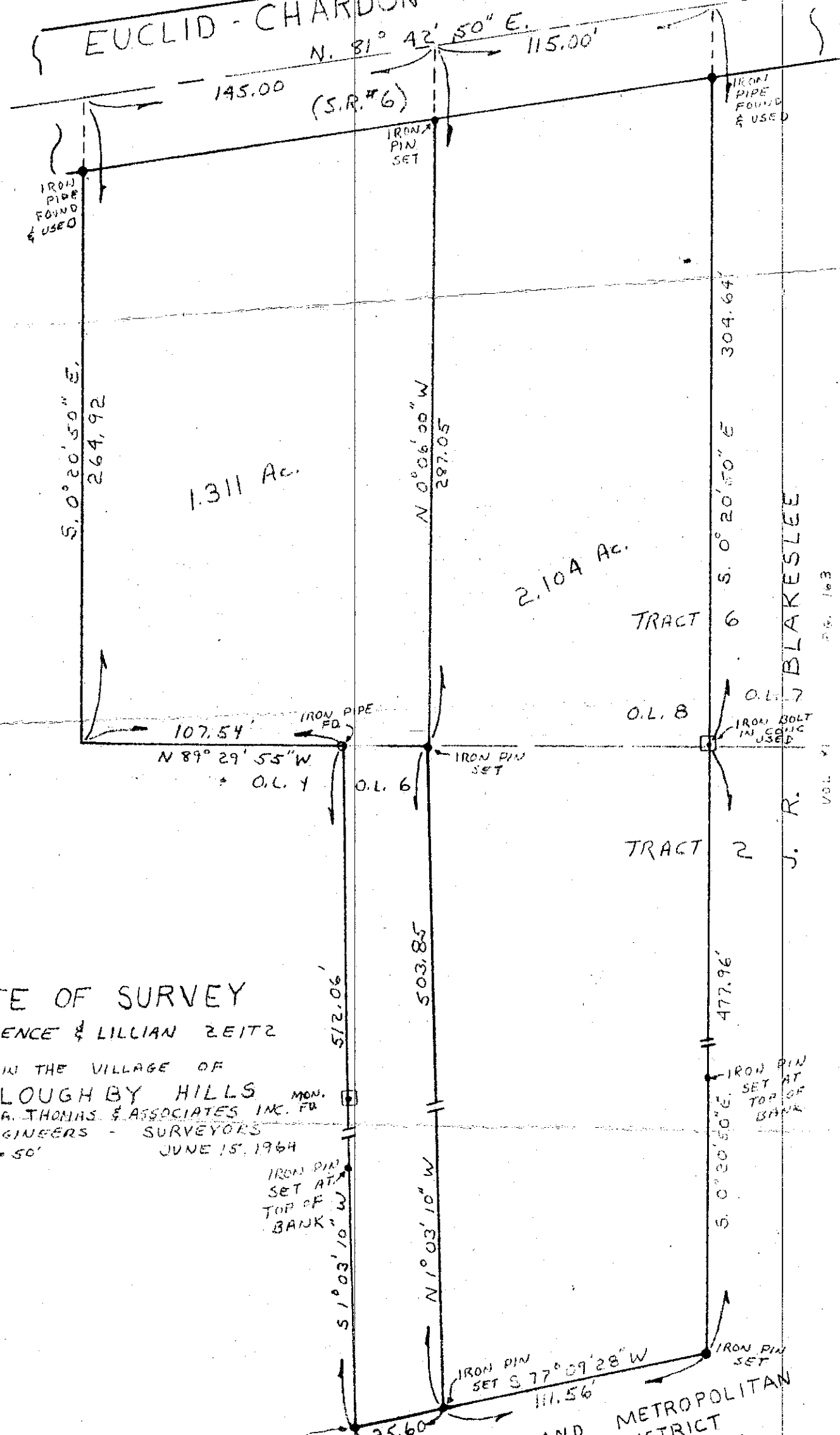


EUCLID - CHARDON RD. 60'



1.311 Ac.

2.104 Ac.

TRACT 6

TRACT 2

J. R. BLAKESLEE

VOL. VI P. 163

PLATE OF SURVEY
FOR LAWRENCE & LILLIAN ZEITZ

NOW IN THE VILLAGE OF
WILLOUGHBY HILLS
FRANK A. THOMAS & ASSOCIATES INC. P.C.
CIVIL ENGINEERS - SURVEYORS
SCALE 1" = 50'
JUNE 15, 1964

IRON PIN SET AT TOP OF BANK

IRON PIN SET AT TOP OF BANK

IRON PIN SET S 77° 09' 28" W

IRON PIN SET

IRON PIN SET

CLEVELAND PARK METROPOLITAN DISTRICT

Pg. 222