

# VACATION PLAT

Proposed Vacation  
RP-1905

OF  
Russell Boulevard, Pine Valley Drive, 50 feet wide,  
Andrew Lane, 50 feet wide, Josephine Court, 50 feet wide and  
Tanner Trail, 50 feet wide

of part of Pine Ridge Valley Estates as recorded  
in Volume 0, Page 19 and 19-1 of L C M R  
Being part of Original Lots 5 and 8  
in Tract 7 now in the  
CITY OF WICKLIFFE, LAKE COUNTY, OHIO  
Scale 1" = 100" January, 1982

**PRELIMINARY**  
F A THOMAS & ASSOC INC  
DEC 16 1981

Dimensions shown on this plat are expressed in feet and  
decimal parts thereof, permanent monuments were found or  
set at points indicated hereon, all of which I certify to  
be correct

FRANK A THOMAS & ASSOCIATES, INC  
Consulting Engineers  
Willoughby, Ohio  
by  
Frank Feleico Reg Surveyor No 5297

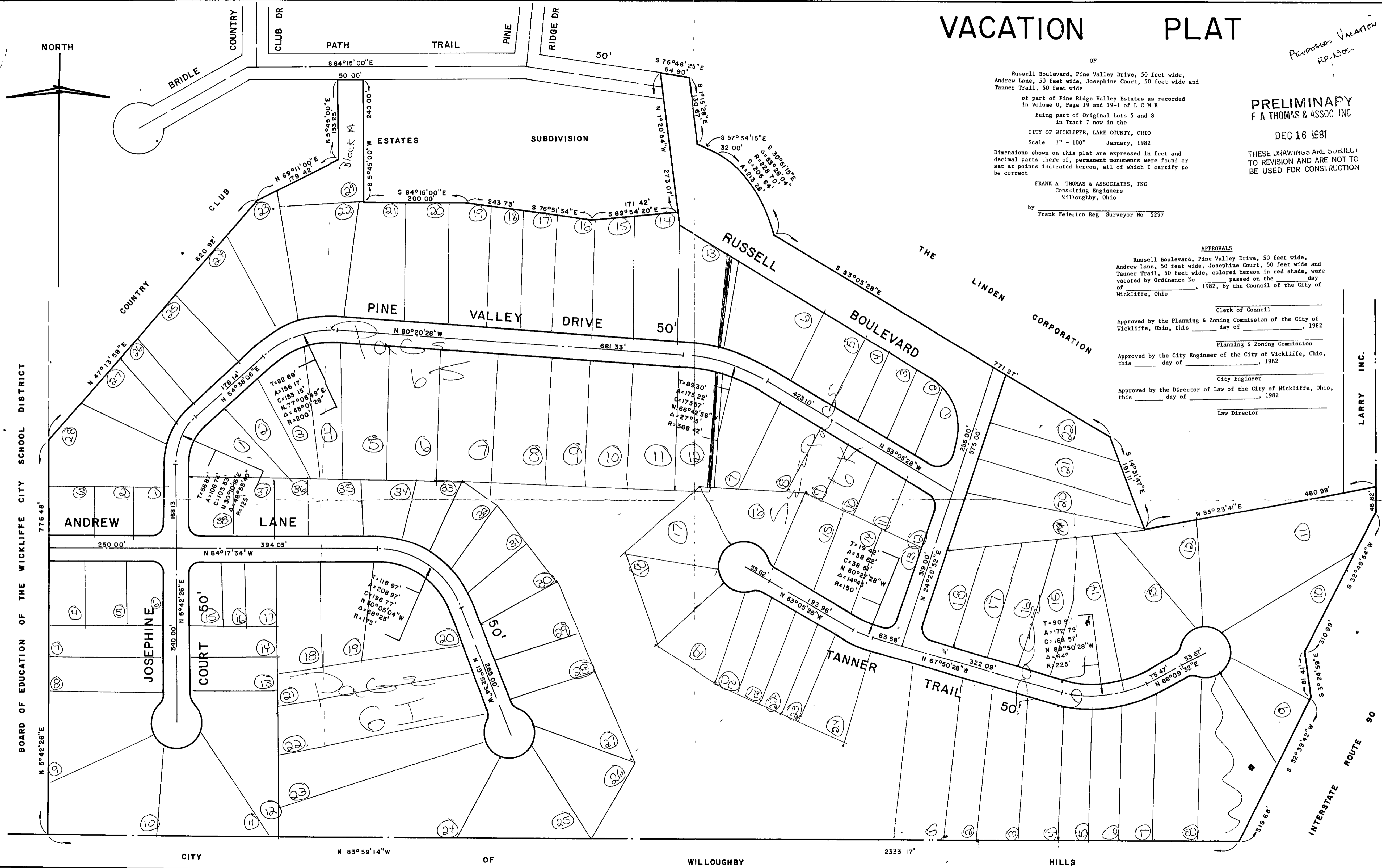
THESE DRAWINGS ARE SUBJECT  
TO REVISION AND ARE NOT TO  
BE USED FOR CONSTRUCTION

**APPROVALS**

Russell Boulevard, Pine Valley Drive, 50 feet wide,  
Andrew Lane, 50 feet wide, Josephine Court, 50 feet wide and  
Tanner Trail, 50 feet wide, colored hereon in red shade, were  
vacated by Ordinance No. \_\_\_\_\_ passed on the \_\_\_\_\_ day  
of \_\_\_\_\_, 1982, by the Council of the City of  
Wickliffe, Ohio

Clerk of Council  
Approved by the Planning & Zoning Commission of the City of  
Wickliffe, Ohio, this \_\_\_\_\_ day of \_\_\_\_\_, 1982  
Planning & Zoning Commission  
Approved by the City Engineer of the City of Wickliffe, Ohio,  
this \_\_\_\_\_ day of \_\_\_\_\_, 1982  
City Engineer  
Approved by the Director of Law of the City of Wickliffe, Ohio,  
this \_\_\_\_\_ day of \_\_\_\_\_, 1982  
Law Director

LARRY INC.  
CITY OF WILLOUGHBY HILLS



BOARD OF EDUCATION OF THE WICKLIFFE CITY SCHOOL DISTRICT

CITY OF WILLOUGHBY HILLS