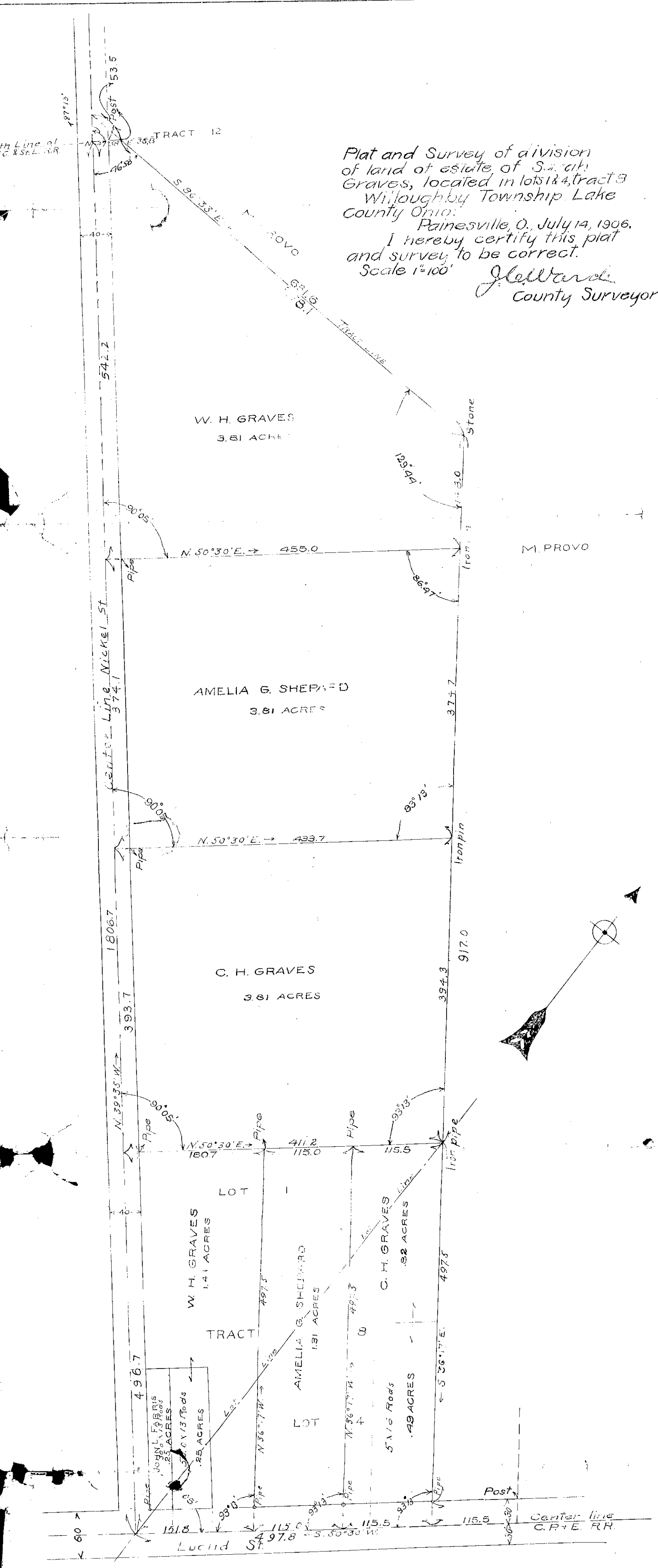


th Line of  
C. & ST. L. RR.

Plat and Survey of division  
of land of estate of Sarah  
Graves, located in lots 1 & 4, tract 3  
Willoughby Township, Lake  
County Ohio.

Painesville, O., July 14, 1906.  
I hereby certify this plat  
and survey to be correct.  
Scale 1"=100'

J. Ellward  
County Surveyor



WICKLIFFE