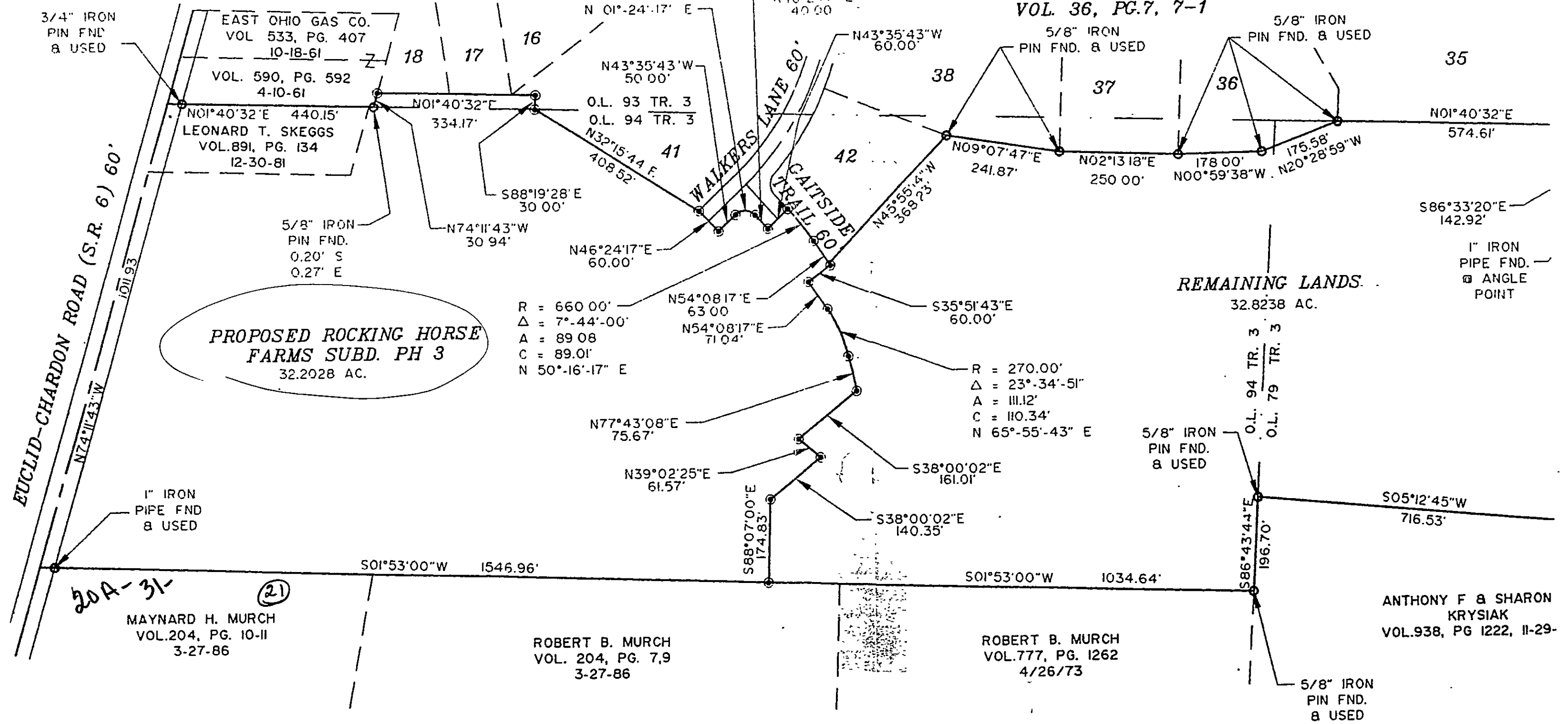


20A-31-23

ROCKING HORSE FARMS
SUBD. PH. 1
VOL. 31, PG. 17, 17-1

ROCKING HORSE FARMS SUBD. PH. 2
VOL. 36, PG. 7, 7-1



R = 30.00'
 Δ = 90°-00'-00"
 A = 47.12
 C = 42.43'
 N 01°-24'-17" E

O.L. 93 TR. 3
 O.L. 94 TR. 3
 N32°15'44"E
 408.52'

R = 660.00'
 Δ = 7°-44'-00"
 A = 89.08
 C = 89.01'
 N 50°-16'-17" E

R = 270.00'
 Δ = 23°-34'-51"
 A = 111.12'
 C = 110.34'
 N 65°-55'-43" E

PROPOSED ROCKING HORSE
 FARMS SUBD. PH 3
 32.2028 AC.

REMAINING LANDS
 32.8238 AC.

EUCLID-CHARDON ROAD (S.R. 6) 60'
 N74°11'43"W
 1011.93'

WALKERS LANE 60'
 GAITSIDE TRAIL 60'

EAST OHIO GAS CO.
 VOL. 533, PG. 407
 10-18-61
 VOL. 590, PG. 592
 4-10-61
 N01°40'32"E 440.15'
 LEONARD T. SKEGGS
 VOL. 891, PG. 134
 12-30-81

5/8" IRON
 PIN FND.
 0.20' S
 0.27' E

5/8" IRON
 PIN FND. & USED

5/8" IRON
 PIN FND. & USED

1" IRON
 PIPE FND
 & USED

5/8" IRON
 PIN FND.
 & USED

1" IRON
 PIPE FND.
 @ ANGLE
 POINT

ANTHONY F & SHARON
 KRYSIAK
 VOL. 938, PG 1222, 11-29-

5/8" IRON
 PIN FND.
 & USED

20A-31-
 MAYNARD H. MURCH
 VOL. 204, PG. 10-11
 3-27-86

ROBERT B. MURCH
 VOL. 204, PG. 7,9
 3-27-86

ROBERT B. MURCH
 VOL. 777, PG. 1262
 4/26/73

(21)