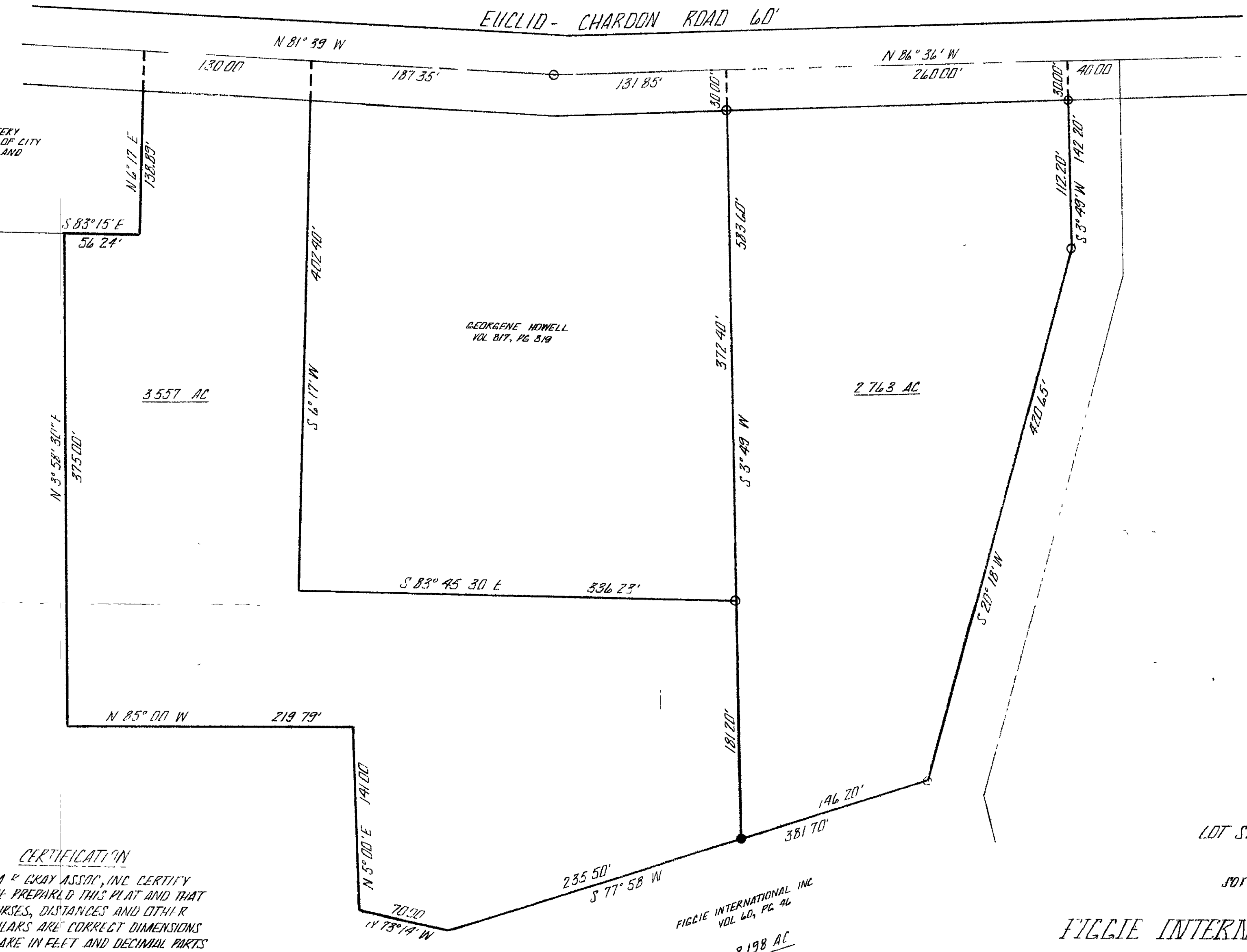


CEMETERY TRUSTEES OF CITY OF KIRTLAND

ROCKWOOD LEDGES ENTRANCES VOL. K, PG. 2



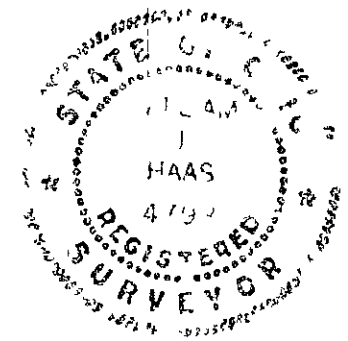
CERTIFICATION

WE, WIM R. GRAY ASSOC., INC. CERTIFY THAT WE PREPARED THIS PLAT AND THAT THE COURSES, DISTANCES AND OTHER PARTICULARS ARE CORRECT DIMENSIONS SHOWN ARE IN FEET AND DECIMAL PARTS THEREOF

BY William J. Haas
WILLIAM J. HAAS PS # 4793

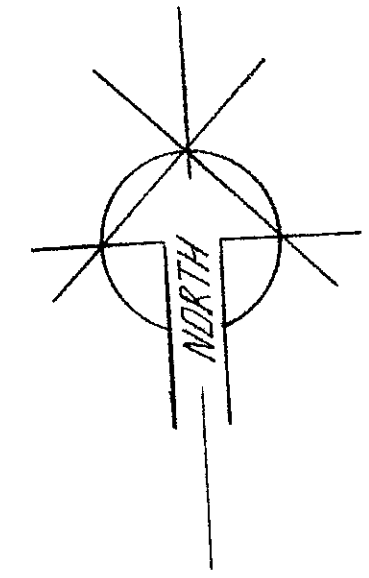
LEGEND

- IRON PIN FOUND AND USED
- IRON PIN SET



FIGGIE INTERNATIONAL INC.

PART OF ORIGINAL KIRTLAND TOWNSHIP
LOT NO 88 TRACT NO 3
CITY OF KIRTLAND LAKE COUNTY OHIO
SCALE 1" = 60' JULY, 1984



WILLIAM R. GRAY ASSOCIATES, INC.
7547 MENTOR AVENUE MENTOR, OHIO 44060 946-1616

TITLE	DATE	DRAWN BY	REV
SHEET NO			