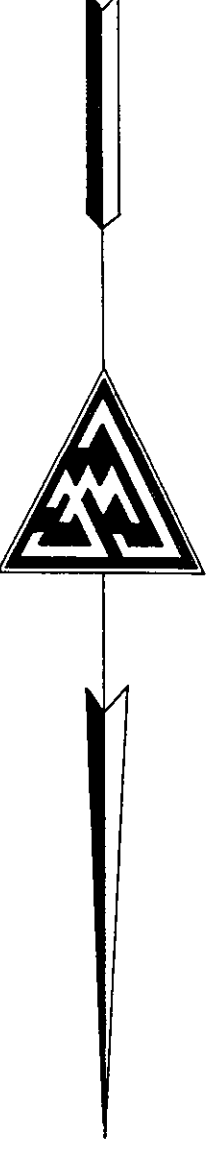
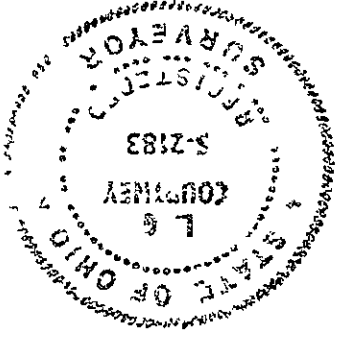


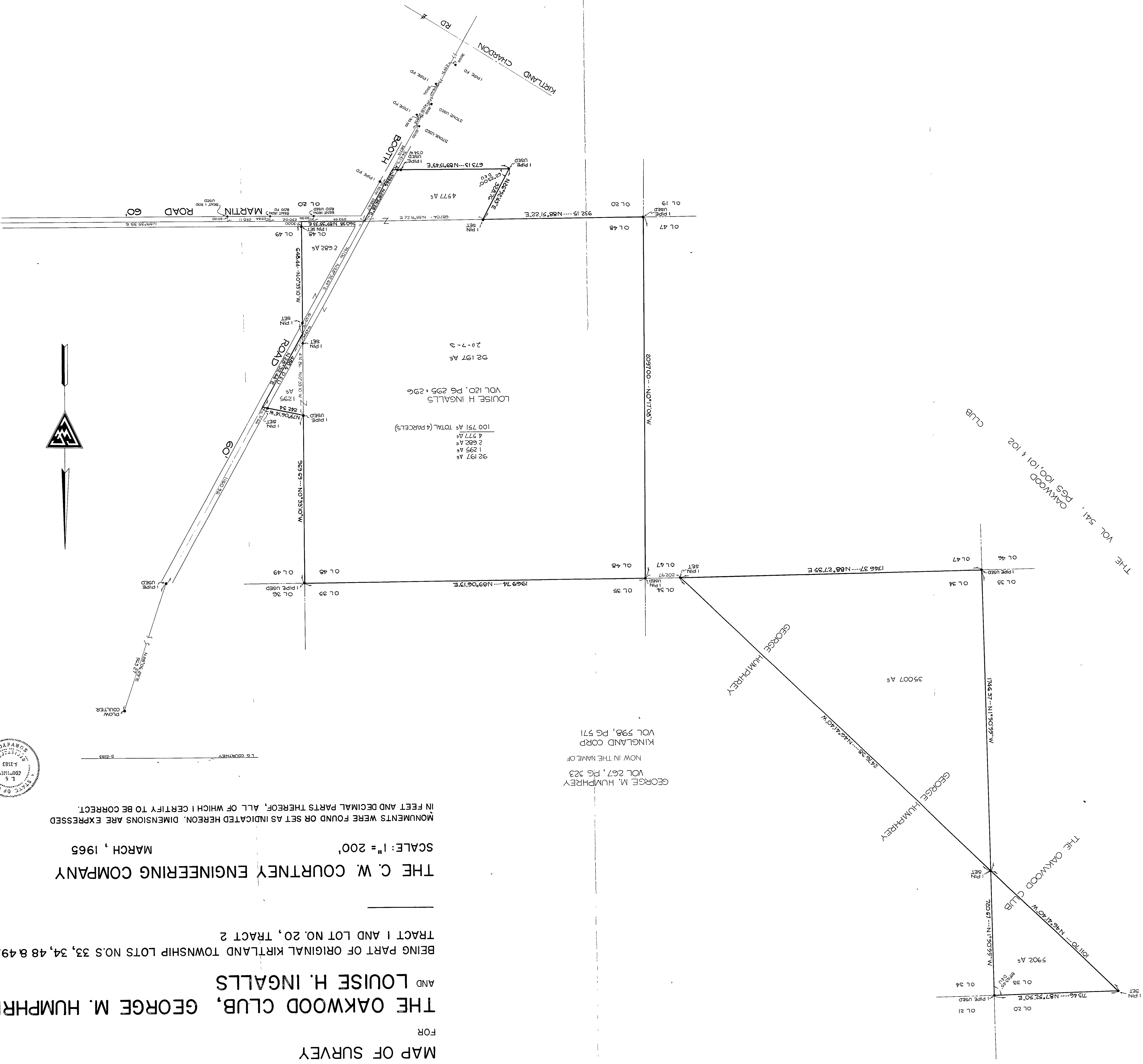
FOR
MAP OF SURVEY
THE OAKWOOD CLUB, GEORGE M. HUMPHREY
AND LOUISE H. INGALLS
 BEING PART OF ORIGINAL KIRTLAND TOWNSHIP LOTS NO. S 33, 34, 48 & 49,
 TRACT 1 AND LOT NO. 20, TRACT 2

THE C. W. COURTNEY ENGINEERING COMPANY
 MARCH, 1965

MONUMENTS WERE FOUND OR SET AS INDICATED HEREON. DIMENSIONS ARE EXPRESSED
 IN FEET AND DECIMAL PARTS THEREOF, ALL OF WHICH I CERTIFY TO BE CORRECT.



1" = 200'



GEORGE M. HUMPHREY
 VOL 267, PG 323
 NOW IN THE NAME OF
 KINGLAND CORP
 VOL 598, PG 571