

SURVEY OF LANDS
OF
MINOR G. NORTON

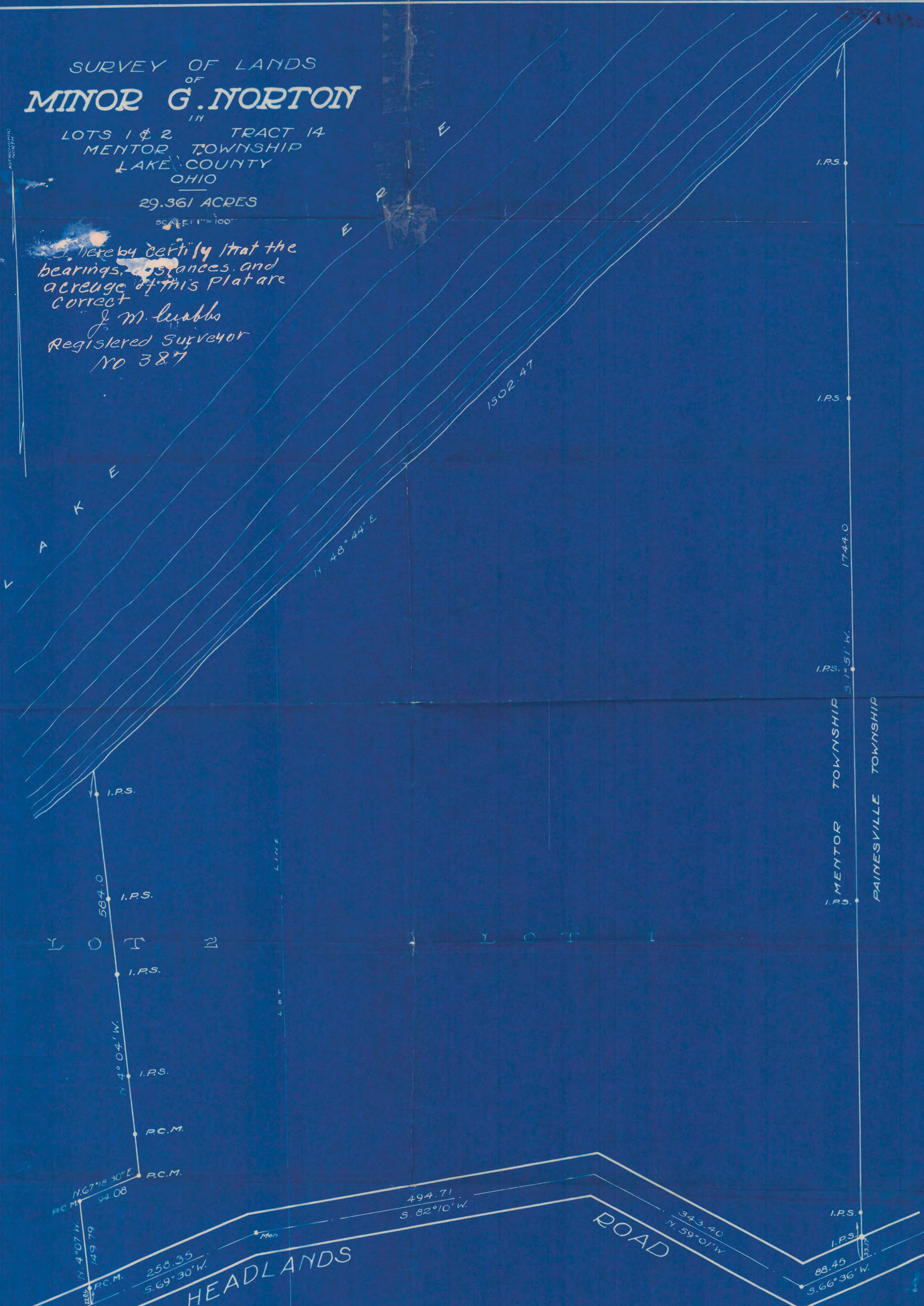
IN
LOTS 1 & 2 TRACT 14
MENTOR TOWNSHIP
LAKE COUNTY
OHIO

29.361 ACRES

SCALE: 1" = 100'

I hereby certify that the
bearings, distances, and
acreage of this Plat are
correct

J. M. Crabbs
Registered Surveyor
No 387



CRABBS & FULLERTON ENGINEERS
PAINESVILLE, OHIO JULY, 1930

Bearings shown are referred to a True Meridian, determined by a series of observations on Polaris

NOTE
P.C.M. indicates Painesville City Monument
I.P.S. indicates Iron Pipe Set.