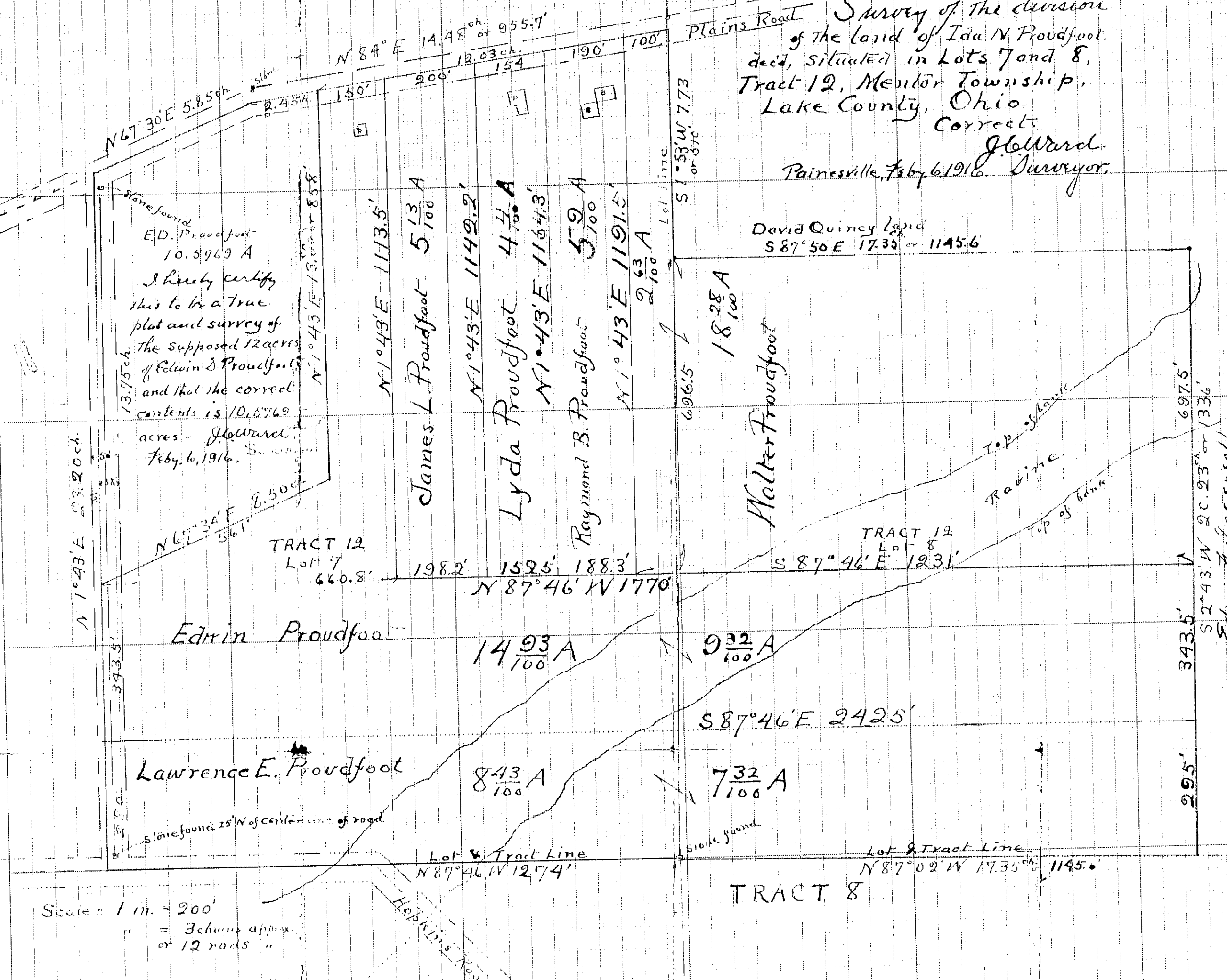


Survey of the division
of the land of Ida N. Proudfoot,
decd, situated in Lots 7 and 8,
Tract 12, Mentor Township,
Lake County, Ohio.
Correct.
J. Howard.
Painesville, Feb. 6, 1916. Surveyor.

Stone found
E.D. Proudfoot
10.5769 A
I hereby certify
this to be a true
plat and survey of
The supposed 12 acres
of Edwin D. Proudfoot
and that the correct
contents is 10.5769
acres - J. Howard
Feb. 6, 1916. Surveyor

David Quincy Land
S 87° 50' E 17.35' or 1145.6



N 1° 43' E 232.0 ch.

N 67° 30' E 5.85 ch.
N 84° E 14.48 ch. of 955.7'
12.03 ch.
154
190
100'

13.75 ch.
N 1° 43' E 13.80 or 858'
N 1° 43' E 1113.5'

James L. Proudfoot 5 $\frac{13}{100}$ A
Lyda Proudfoot 4 $\frac{4}{100}$ A
Raymond B. Proudfoot 5 $\frac{9}{100}$ A
Walter Proudfoot 18 $\frac{28}{100}$ A

N 67° 34' E 8.50 ch.
N 1° 43' E 232.0 ch.
343.5'
660.8'
198.2'
152.5'
188.3'
N 87° 46' W 1770'

Edwin Proudfoot

14 $\frac{93}{100}$ A
9 $\frac{32}{100}$ A

Lawrence E. Proudfoot

8 $\frac{43}{100}$ A
7 $\frac{32}{100}$ A

S 87° 46' E 2425'

Lot 7 Tract Line
N 87° 46' W 1274'

Lot 8 Tract Line
N 87° 02' W 17.35' or 1145.6

TRACT 8

697.5'
343.5'
295'
S 2° 43' W 20.23' or 1336'
Edwin A. Sengersoll

S 1° 53' W 7.73' or 370'