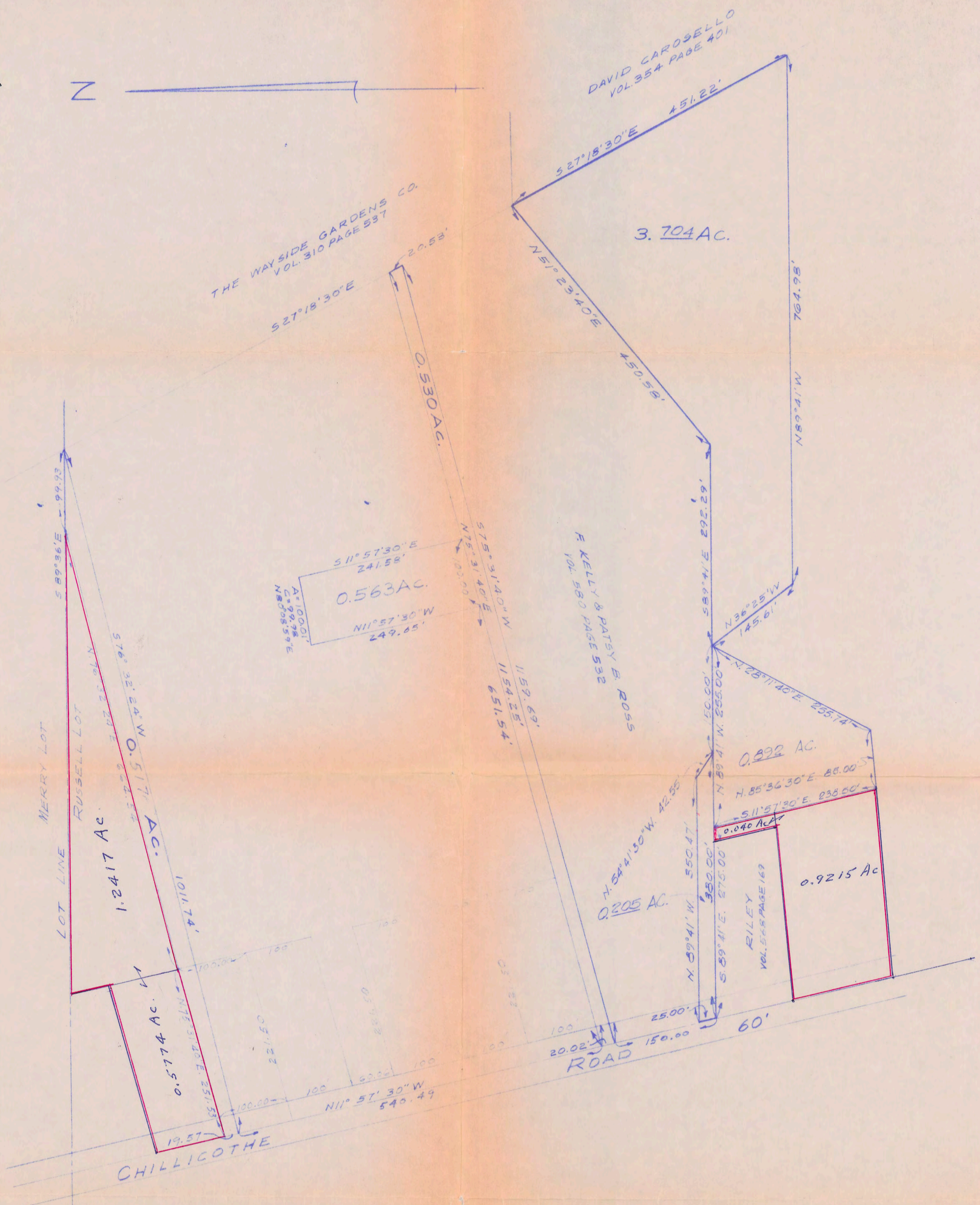


1.2417 AC
 .5774
 .04
 92.15
 2.7806 AC 270.
 Fayeth



I here by certify that
 the areas outlined in red
 are correct.

W. R. Gray

PLAT OF LAND PARCELS
 ON
 CHILICOTHE ROAD
 for
 JOSEPH C. JONES
 PART OF RUSSELL LOT IN ORIGINAL MENTOR TWP.
 LAKE COUNTY, OHIO
 SCALE: 1"=100' JUNE, 1966