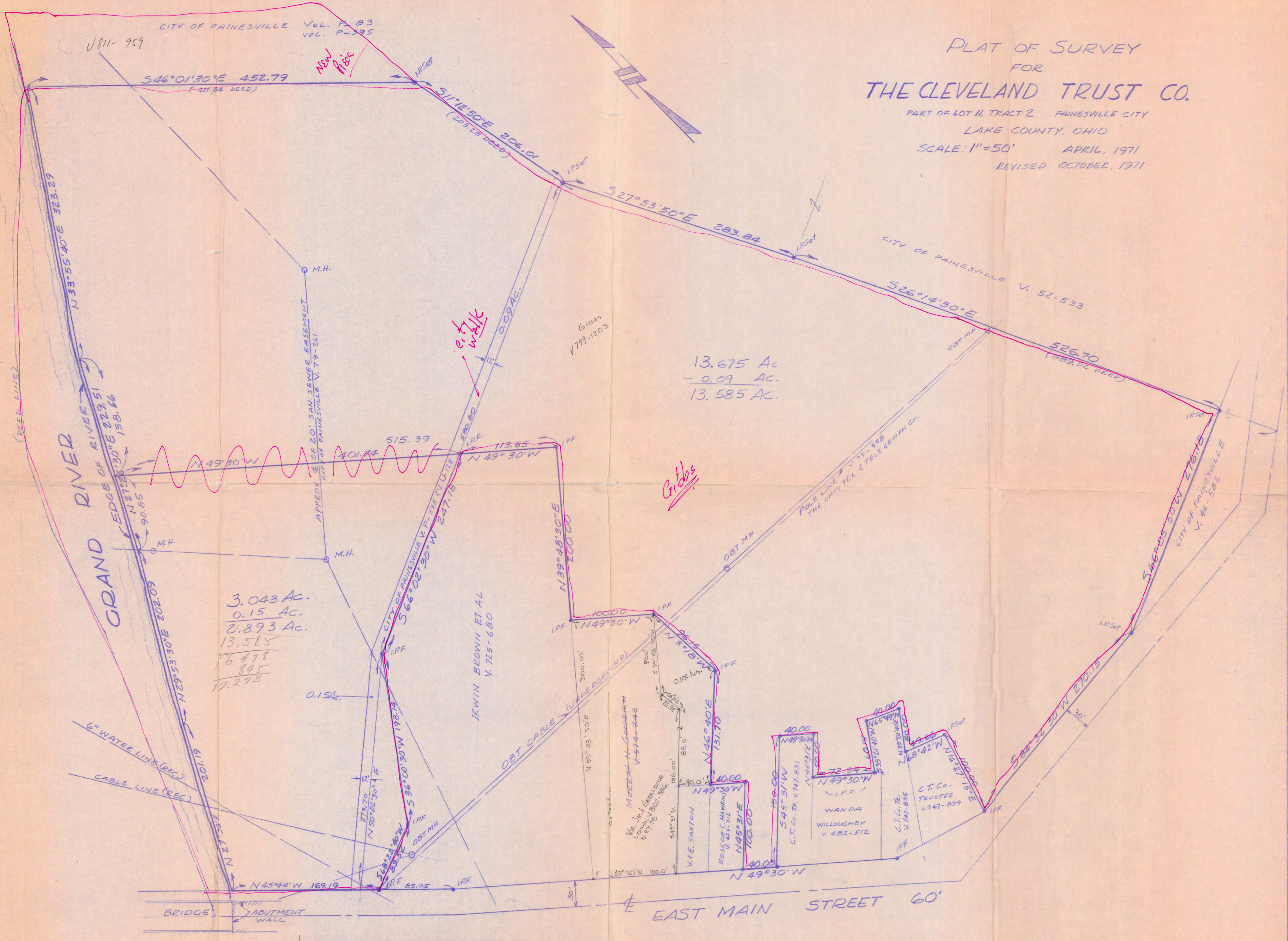


PLAT OF SURVEY
FOR
THE CLEVELAND TRUST CO.

PART OF LOT II, TRACT 2 PAINESVILLE CITY
LAKE COUNTY, OHIO

SCALE: 1"=50' APRIL, 1971

REVISED OCTOBER, 1971



3.043 Ac.
0.15 Ac.
2.893 Ac.
13.585
16.478
895
17.273

13.675 Ac.
- 0.09 Ac.
13.585 Ac.