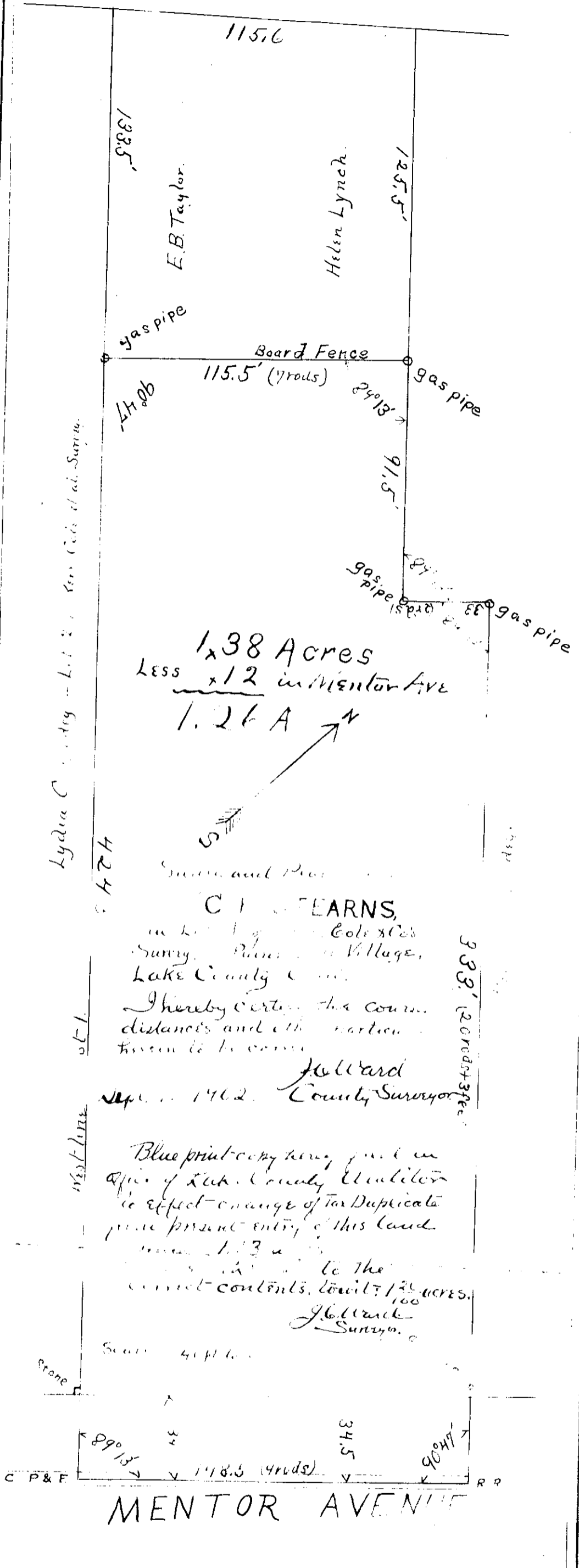
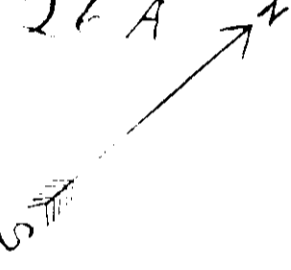


JACKSON STREET.



1.38 Acres
 Less x 12 in Mentor Ave
 1.26 A



C. I. FEARN'S

in Lot 1 of ... Col. ...
 Surry ... Village,
 Lake County ...

I hereby certify the course,
 distances and other particular
 herein to be correct.

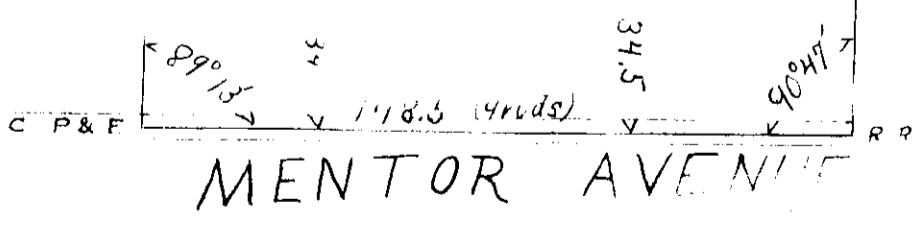
J. Howard

Sept. 1962. County Surveyor

Blue print copy ... in
 office of Lake County Auditor
 to effect change of tax Duplicate
 prior present entry of this land
 ... to the
 correct contents, total: 1.26 acres.

J. Howard
 County Surveyor

Stone



MENTOR AVENUE