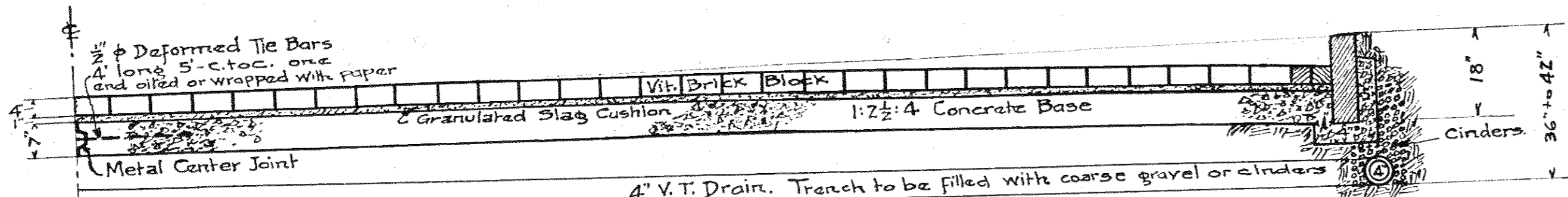
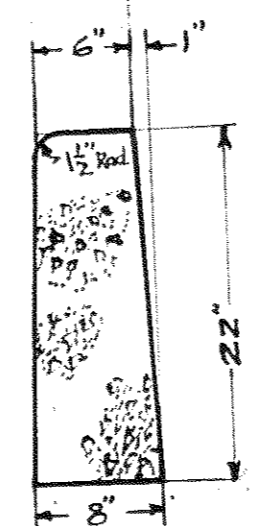


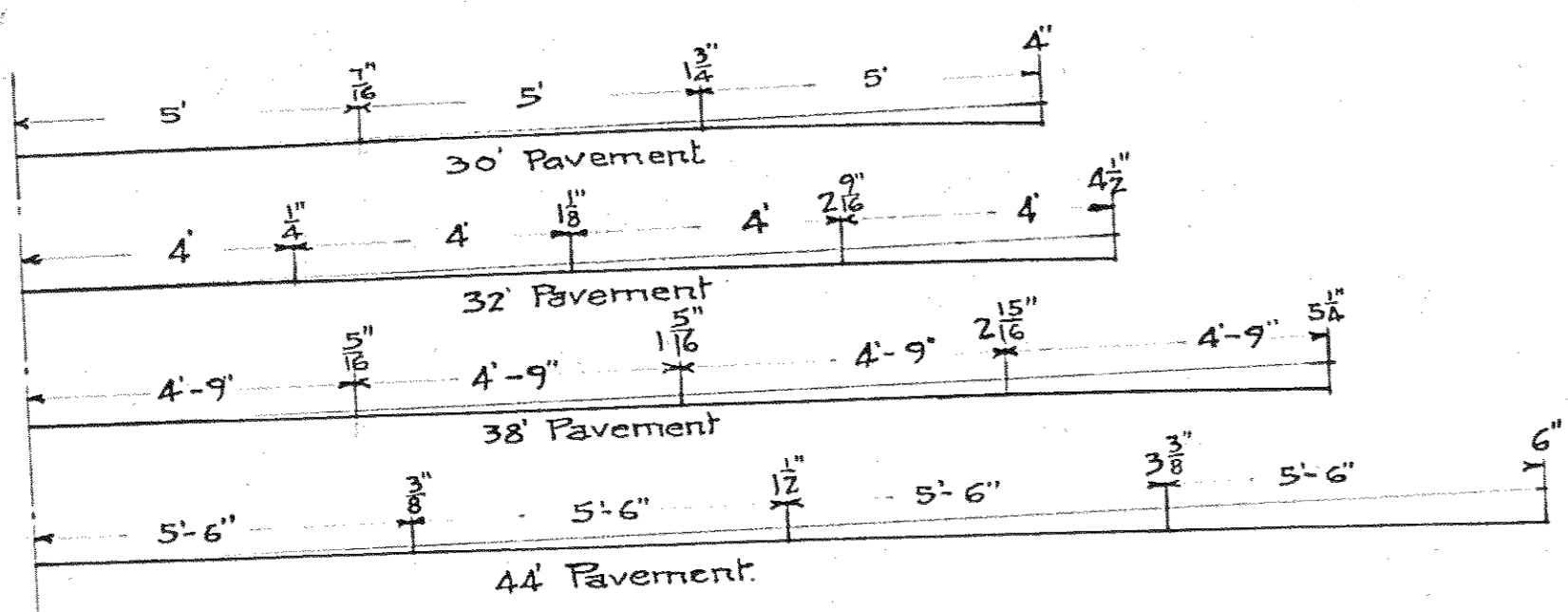


Use Hillside Brick on Subway Approaches from Sta. 0+50 to Sta. 2+90 and Sta. 3+90 to Sta. 7+35
 French Drains shown thus ---

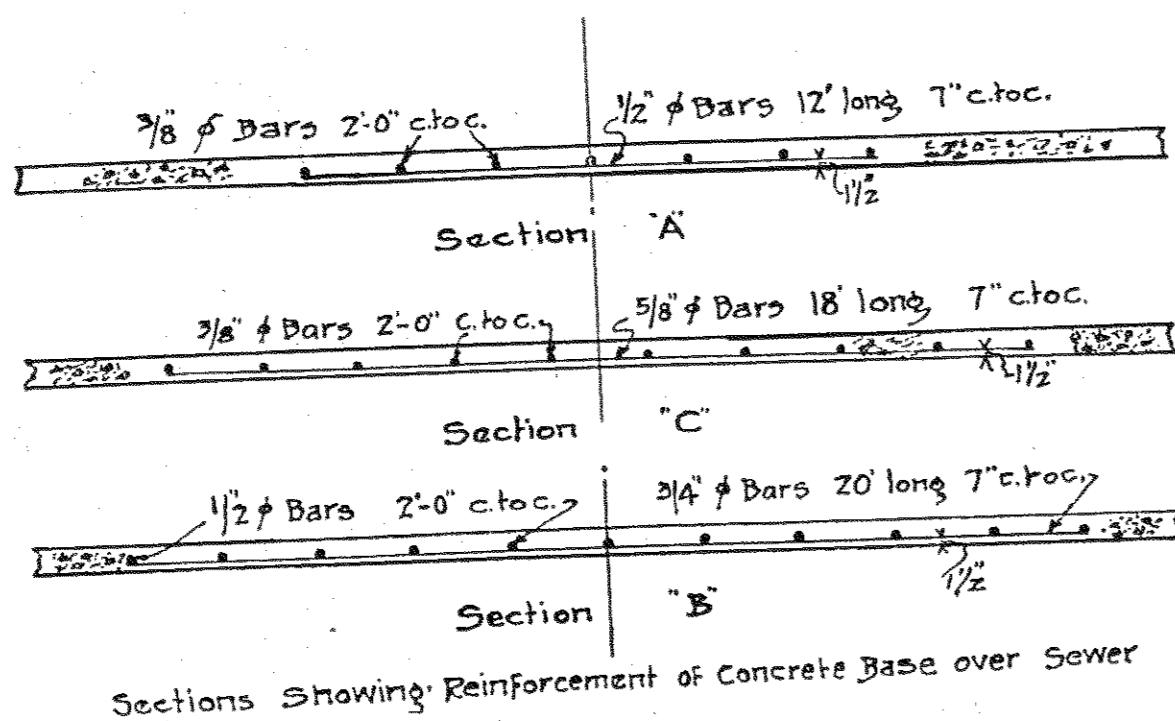
Typical Section Concrete Curb



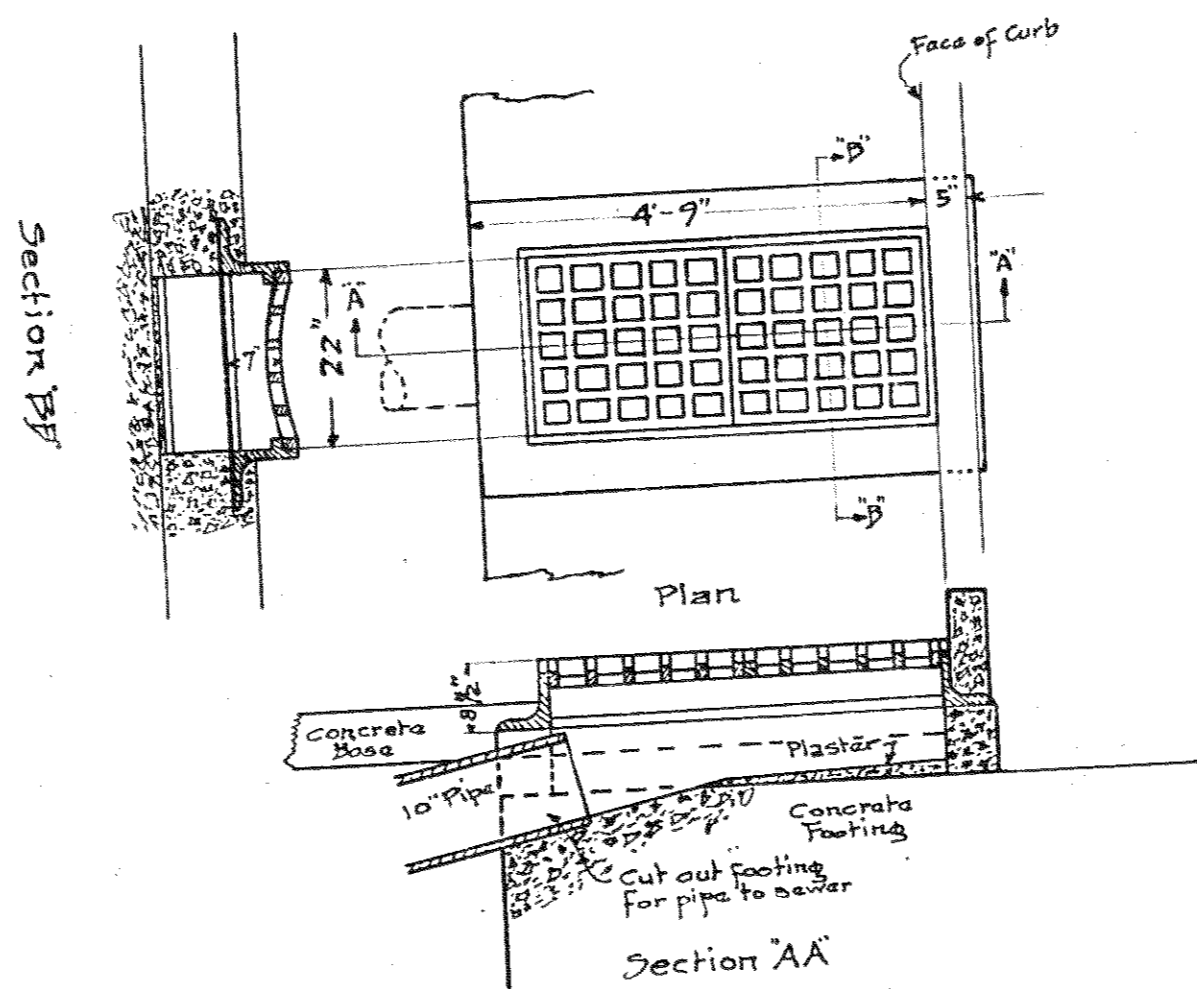
Typical Cross Section of One-Half of Pavement



Crown Ordinates



Sections Showing Reinforcement of Concrete Base over Sewer



Details of Inlet Basins Sta. 3+15 in Subway
 Note: Cast Iron Inlet Basin Top and Grate to be of best quality material and of Section at least as heavy as that used in Ohio Highway Road Standard Basin as manufactured by the Machine Foundry Co.

Approved *Thos. B. Wymann*
 City Manager

PLAN OF PROPOSED PAVEMENT IN
STATE STREET SUBWAY
 PAINESVILLE CITY, LAKE COUNTY, O.
 SCALE: 1"=40' SEPT. '25

CRABBS & FULLERTON
 ENGINEERS.