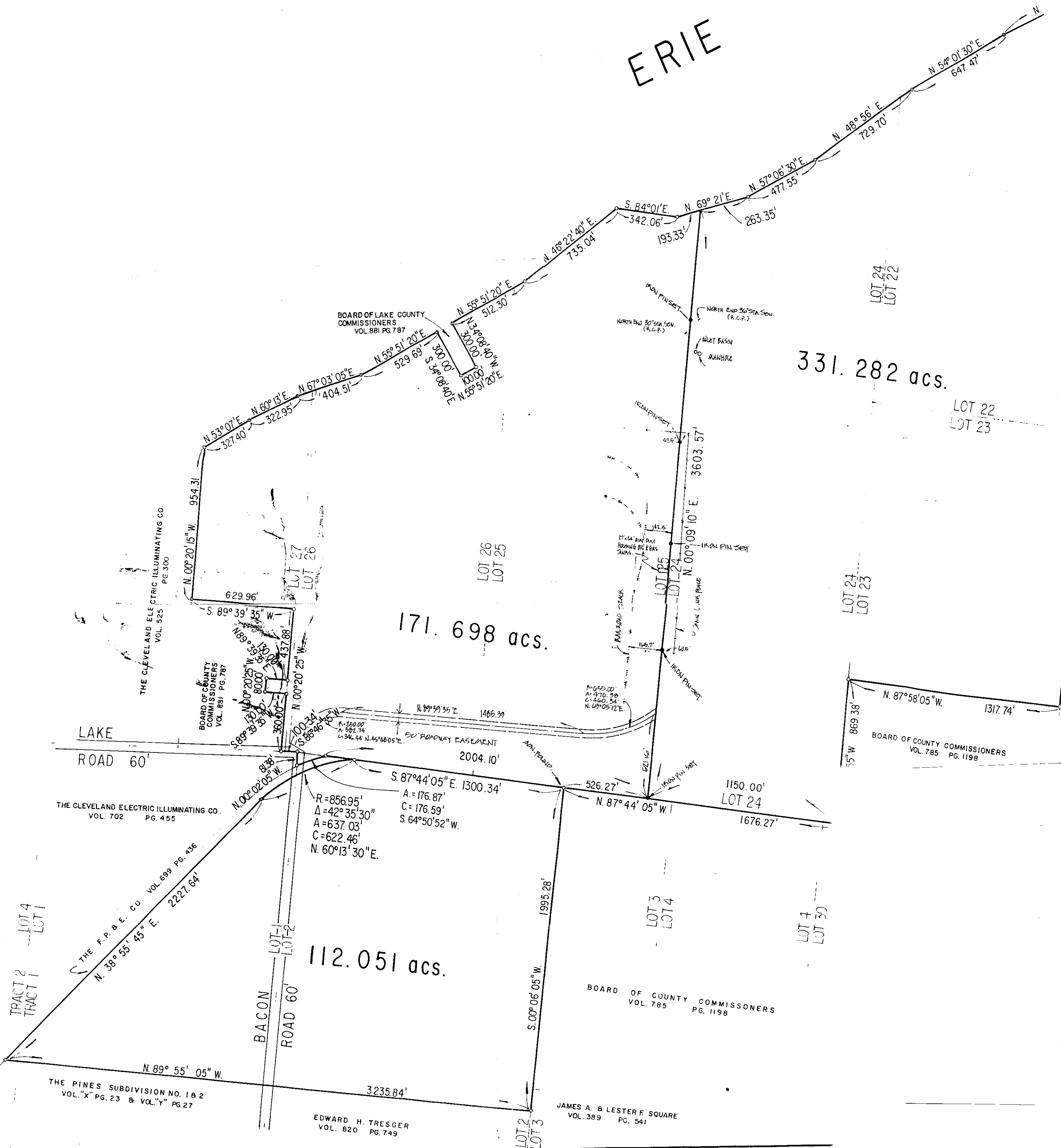


ERIE



331.282 acs.

171.698 acs.

112.051 acs.

LAKE ROAD 60'

BACON ROAD 60'

JAMES A. & LESTER F. SQUARE
VOL. 389 PG. 541

THE CLEVELAND ELECTRIC ILLUMINATING CO.
VOL. 702 PG. 455

THE F.P. & E. CO. VOL. 699 PG. 436

THE PINES SUBDIVISION NO. 182
VOL. "X" PG. 23 & VOL. "Y" PG. 27

EDWARD H. TRESGER
VOL. 820 PG. 749

BOARD OF COUNTY COMMISSIONERS
VOL. 785 PG. 1198

BOARD OF COUNTY COMMISSIONERS
VOL. 881 PG. 787

BOARD OF LAKE COUNTY COMMISSIONERS
VOL. 881 PG. 787

THE CLEVELAND ELECTRIC ILLUMINATING CO.
VOL. 525 PG. 300

LOT 24
LOT 22

LOT 22
LOT 23

LOT 24
LOT 23

BOARD OF COUNTY COMMISSIONERS
VOL. 785 PG. 1198

LOT 3
LOT 4

LOT 4
LOT 30

TRACT 2
TRACT 1

LOT 4
LOT 1

LOT 2
LOT 3

$R = 856.95'$
 $\Delta = 42^\circ 35' 30''$
 $A = 637.03'$
 $C = 622.46'$
 $N. 60^\circ 13' 30'' E.$

$S. 87^\circ 44' 05'' E. 1300.34'$
 $A = 176.87'$
 $C = 176.59'$
 $S. 64^\circ 50' 52'' W.$

LOT 24
1150.00'
1676.27'

$N. 87^\circ 58' 05'' W. 1317.74'$

$N. 54^\circ 01' 30'' E. 647.47'$

$N. 48^\circ 56' E. 729.70'$

$N. 57^\circ 06' 30'' E. 477.55'$

$S. 84^\circ 01' E. 342.06'$

$N. 69^\circ 21' E. 193.33'$

$N. 48^\circ 22' 40'' E. 735.04'$

$N. 55^\circ 51' 20'' E. 512.30'$

$N. 55^\circ 51' 20'' E. 529.69'$

$N. 67^\circ 03' 05'' E. 404.51'$

$N. 60^\circ 13' E. 322.95'$

$N. 53^\circ 07' E. 327.40'$

$N. 00^\circ 20' 15'' W. 954.31'$

$S. 89^\circ 39' 35'' W. 629.96'$

$N. 00^\circ 20' 25'' W. 437.88'$

$N. 89^\circ 39' 35'' W. 800.00'$

$N. 00^\circ 02' 05'' W. 83.38'$

$N. 38^\circ 55' 45'' E. 2227.64'$

$N. 89^\circ 39' 35'' E. 1465.39'$

$N. 69^\circ 05' 12'' E. 1165.7'$

$S. 5^\circ W. 869.38'$

$N. 00^\circ 06' 05'' W. 1995.28'$

$S. 00^\circ 06' 05'' W. 1995.28'$

$N. 87^\circ 44' 05'' W. 526.27'$

$N. 87^\circ 44' 05'' W. 1150.00'$

$N. 87^\circ 44' 05'' W. 1676.27'$

$N. 87^\circ 44' 05'' W. 1150.00'$

$N. 87^\circ 44' 05'' W. 1676.27'$

$N. 87^\circ 44' 05'' W. 1150.00'$

$N. 87^\circ 44' 05'' W. 1676.27'$

$N. 87^\circ 44' 05'' W. 1150.00'$

$N. 87^\circ 44' 05'' W. 1676.27'$

3235.84'

$N. 89^\circ 55' 05'' W.$

LOT 1-1
LOT 1-2

LOT 1-1
LOT 1-2

LOT 1-1
LOT 1-2

LOT 1-1
LOT 1-2

LOT 1-1
LOT 1-2

LOT 1-1
LOT 1-2

LOT 1-1
LOT 1-2

LOT 1-1
LOT 1-2

LOT 1-1
LOT 1-2

LOT 1-1
LOT 1-2

LOT 1-1
LOT 1-2

LOT 1-1
LOT 1-2

LOT 1-1
LOT 1-2

LOT 1-1
LOT 1-2

LOT 1-1
LOT 1-2

LOT 1-1
LOT 1-2

LOT 1-1
LOT 1-2

LOT 1-1
LOT 1-2

LOT 1-1
LOT 1-2

LOT 1-1
LOT 1-2

LOT 1-1
LOT 1-2

LOT 1-1
LOT 1-2

LOT 1-1
LOT 1-2

LOT 1-1
LOT 1-2

LOT 1-1
LOT 1-2

LOT 1-1
LOT 1-2

LOT 1-1
LOT 1-2

LOT 1-1
LOT 1-2

LOT 1-1
LOT 1-2

LOT 1-1
LOT 1-2

LOT 1-1
LOT 1-2

LOT 1-1
LOT 1-2

LOT 1-1
LOT 1-2

LOT 1-1
LOT 1-2