

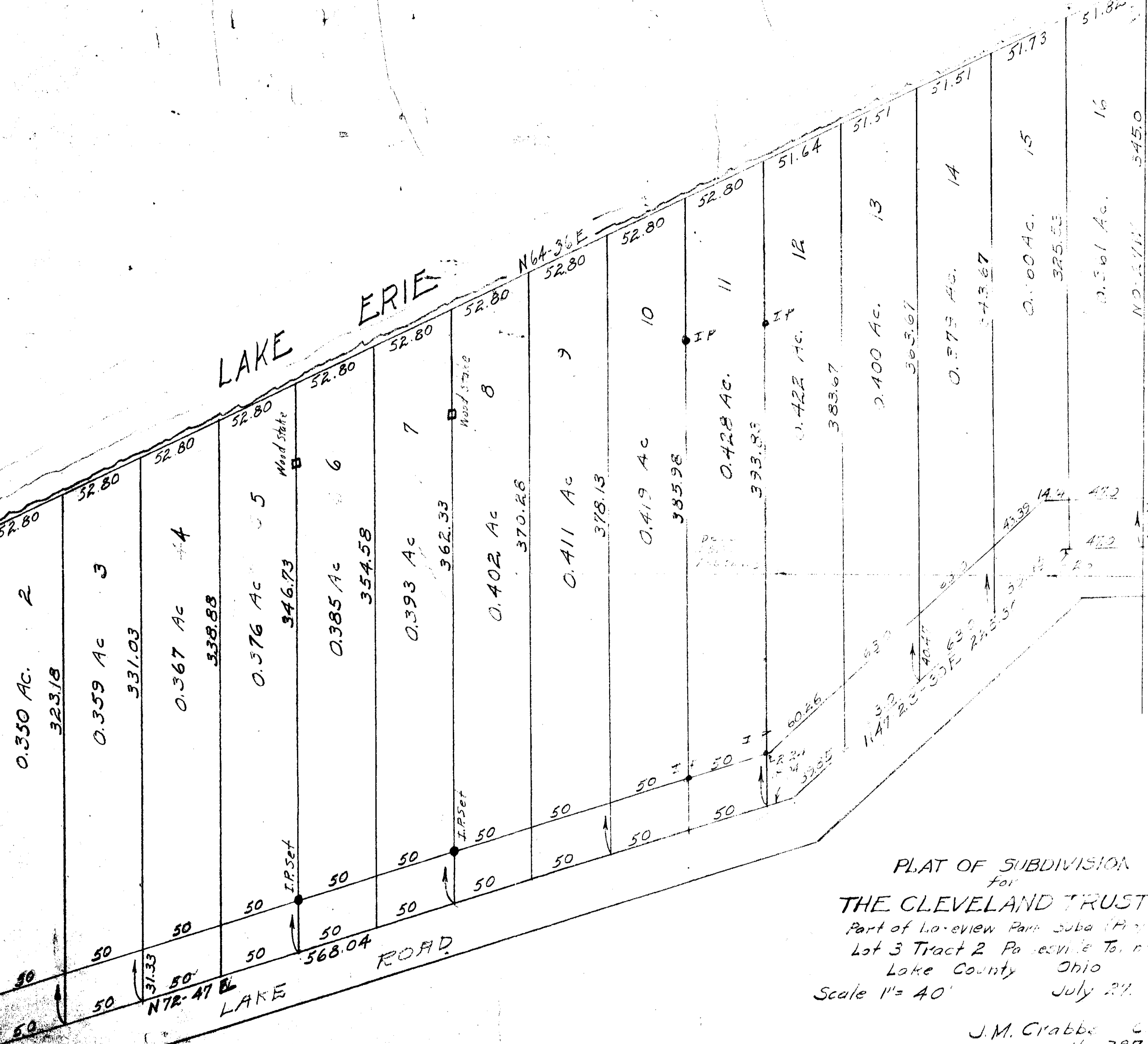
034

HARDY POINT ALLOT.

10-27W Lot Line

Frank A. & Florence I. Fletcher

10-27W 215.33



PLAT OF SUBDIVISION
 for
THE CLEVELAND TRUST CO.
 Part of Lo-view Park Subd. (Map 101)
 Lot 3 Tract 2 Parisville Twp.,
 Lake County Ohio
 Scale 1" = 40' July 27, 1911

J.M. Crabbe C.E.
 No. 387

SUNSET POINT ALLOT.