

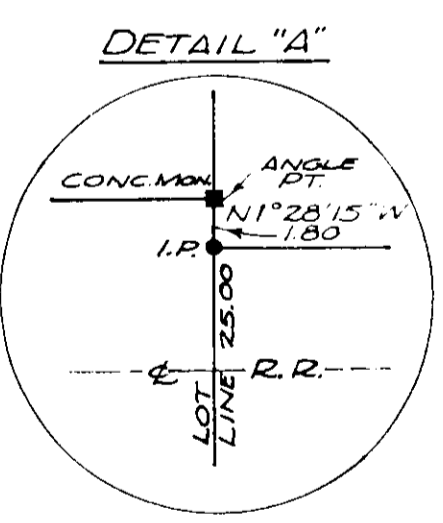
I.R.C. FIBERS CO.
V 728-442

THE CLEVELAND ELECTRIC
ILLUMINATING COMPANY
V 702-455

PAINESVILLE & EASTERN
RAILROAD COMPANY
V 702-455

EASEMENT C.E.I. CO.
V 440-272

THE CLEVELAND ELECTRIC
ILLUMINATING COMPANY
V 332-542



NOTE: INDICATES TILE AND CONCRETE MONUMENTS
 INDICATES IRON PIPE STAKES SET ON LINE

CURVE DATA:
R=2750
A=102°58'45"W
CH=288.87
L=120.00

CURVE DATA:
R=2750
A=102°58'45"W
CH=288.87
L=120.00

422.162 AC.
66.175 AC.
33.370 AC.
852 AC.
TOTAL ACREAGE 522.759 AC.

PLAT OF SURVEY FOR MIDLAND ROSS CORPORATION

LOTS 1,2,6,7,8 TRACT 1 LOTS 3,4,7 TRACT 2
PAINESVILLE TOWNSHIP
LAKE COUNTY OHIO
SCALE: 1"=200' JAN., 1970

MADE FOR AND AT THE INSTANCE OF THE:
**LAND TITLE GUARANTEE & TRUST CO.
& LEXINGTON JOINT VENTURE** (ORDER # P-161506)
WE HEREBY CERTIFY THAT WE SURVEYED THE PROPERTY SHOWN ON THE ANNEXED PLAT AND THAT
AND THAT ALL INFORMATION SHOWN IS CORRECT TO BEST OF OUR KNOWLEDGE.
COLPETZER WOODS CONSULTANTS INC. (FULLERTON KEHR ASSOCIATES)
REGISTERED ENGINEERS & SURVEYORS

