

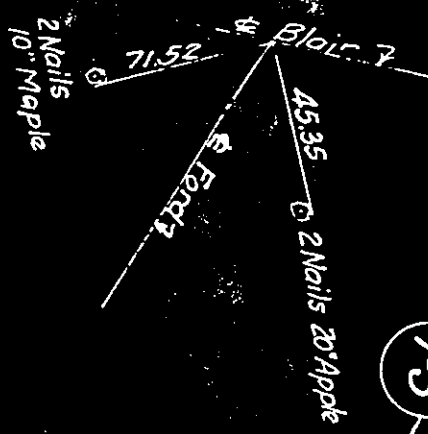


ment  
PAVEMENT.

BEGIN WORK  
ON APPROACH

NOTE: - Pave Approach +590.75 ft

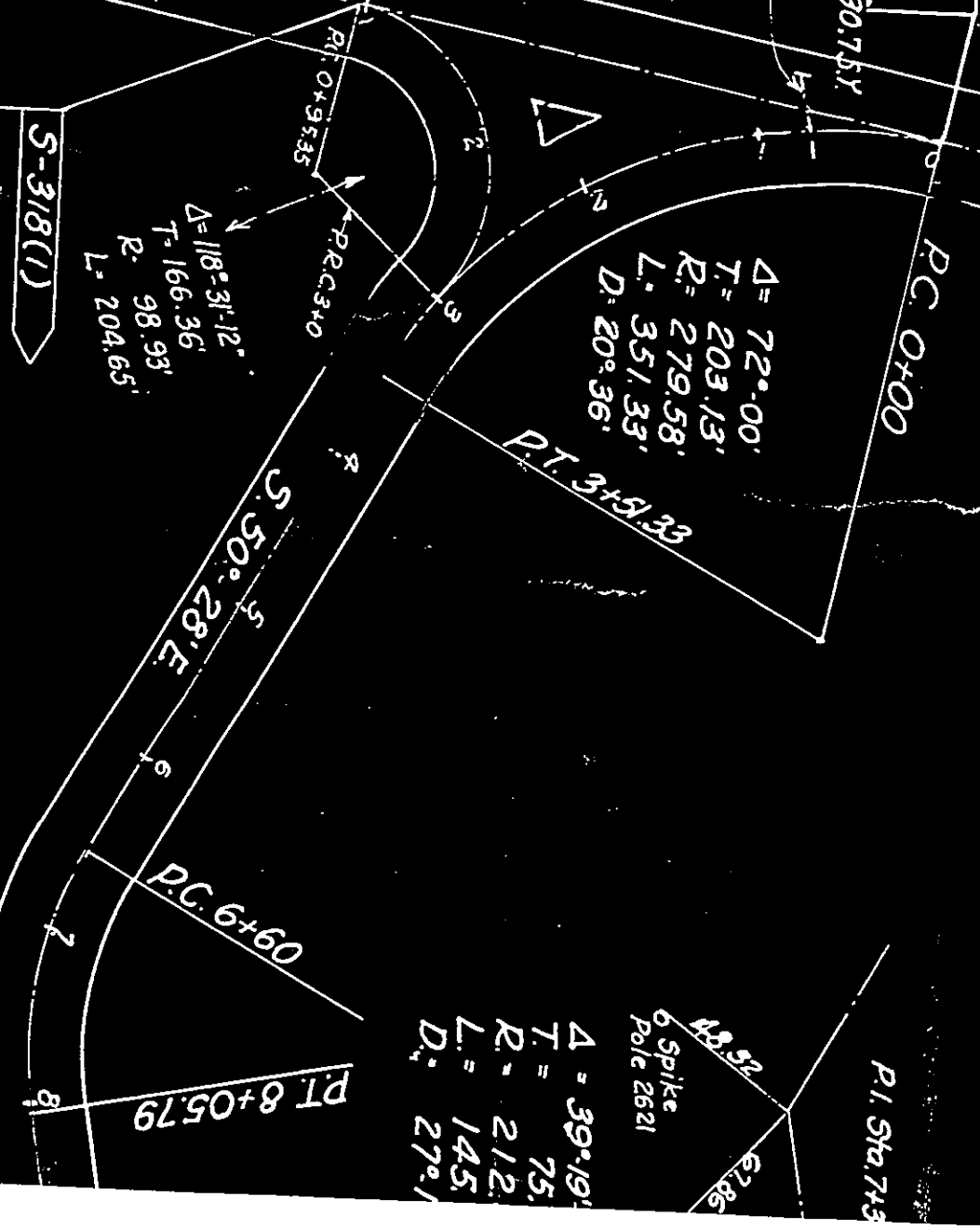
1-S



to be furnished and  
set by State forces  
of this Project.

C.H.N. N° 217  
PAINE RD.

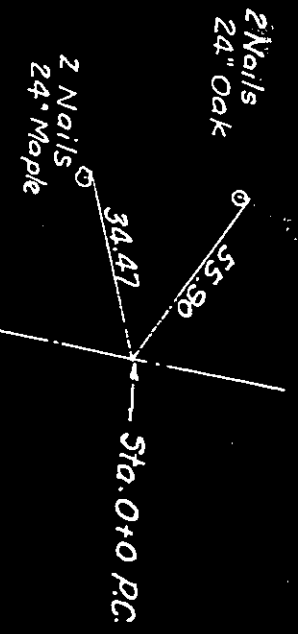
N. 21°-32' E.  
BLAIR RD.



$\Delta = 72^\circ-00'$   
 $T = 203.13'$   
 $R = 279.58'$   
 $L = 351.33'$   
 $D = 20^\circ-36'$

$\Delta = 118^\circ-31'-12''$   
 $T = 166.36'$   
 $R = 98.93'$   
 $L = 204.65'$

$\Delta = 39^\circ-19'$   
 $T = 75'$   
 $R = 212'$   
 $L = 145'$   
 $D = 27^\circ-1'$



6 Spike  
Pole 2621

Sta. 0+95.35  
Begin Project  
N° S-318 (1)

B.M. #1 Sta 0-07  
Spk. Ft. Root 24" Maple  
30' R. of  $\Delta$   
Elevation 821.56

B.M. #2 Sta 6+92  
Spk. Front 20" Apple  
50' L. of  $\Delta$   
Elevation 838.20

S-318 (1)

P.T. 8+05.79