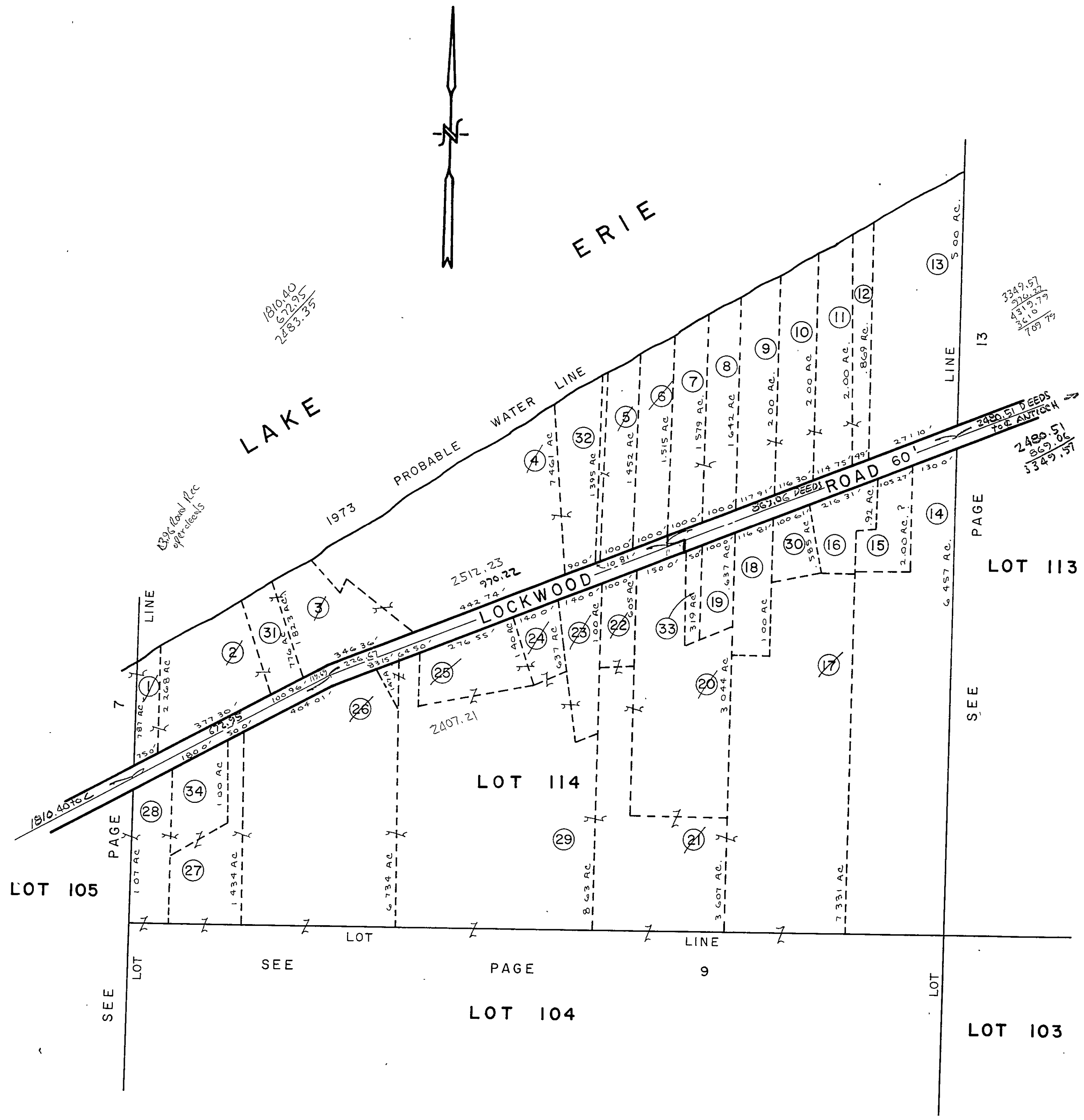


DELETE: ① THRU ⑥, ⑦, ⑩, ⑫ THRU ⑲, ⑳, ⑳, ㉑, ㉒, ㉓, ㉔

NORTH PERRY VILLAGE

LOT 114

C.E.I. PAR. COMB. ON 6-1



P.C.L. NO.	O W N E R S			
1	THE CLEVE ELEC ILL CO			
2	THE CLEVE ELEC ILL CO			
3	THE CLEVE ELEC ILL CO			
4	THE CLEVE ELEC ILL CO			
5	EVERETT ALEXANDRA B-27-59	THE CLEVE ELEC ILL CO.		
6	HELMUTH + BEMI SCHUSTER	CLEVE ELECTRIC ILLUMINATING CO.		
7	MARY CORRIGAN DANIELS			
8	MARY CORRIGAN DANIELS			
9	MARY H CORRIGAN			
10	MARY H CORRIGAN			
11	MARY H. CORRIGAN			
12	MARY H CORRIGAN			
13	THE VILLAGE OF N PERRY			
14	DONALD J + EDITH CHAPMAN			
15	ELSA O SLY			
16	MOODY BIBLE TRST.	OTIS + HELEN GARNER		
17	THE CLEVE ELEC ILL CO			
18	LAWRENCE + EDITH C GIBSON			
19	EDWARD + RUTH HOVLIK			
20	THE CLEVE ELEC ILL. CO			
21	THE CLEVE. ELEC ILL CO.			
22	THE CLEVE ELEC ILL. CO			
23	THE CLEVE ELEC ILL CO.			
24	THE CLEVE ELEC ILL CO.			
25	THE CLEVE ELEC. ILL CO			
26	THE CLEVE. ELEC ILL CO.			
27	THE CLEVE ELEC ILL CO			
28	THE CLEVE ELEC ILL CO			
29	THE CLEVE ELEC ILL. CO.			
30	JAMES E + EDITH CRISS			
31	THE CLEVE ELEC ILL. CO			
32	THE CLEVE ELEC ILL. CO.			
33	EDWARD C. + RUTH HOVLIK			
34	THE CLEVE ELEC ILL CO			

