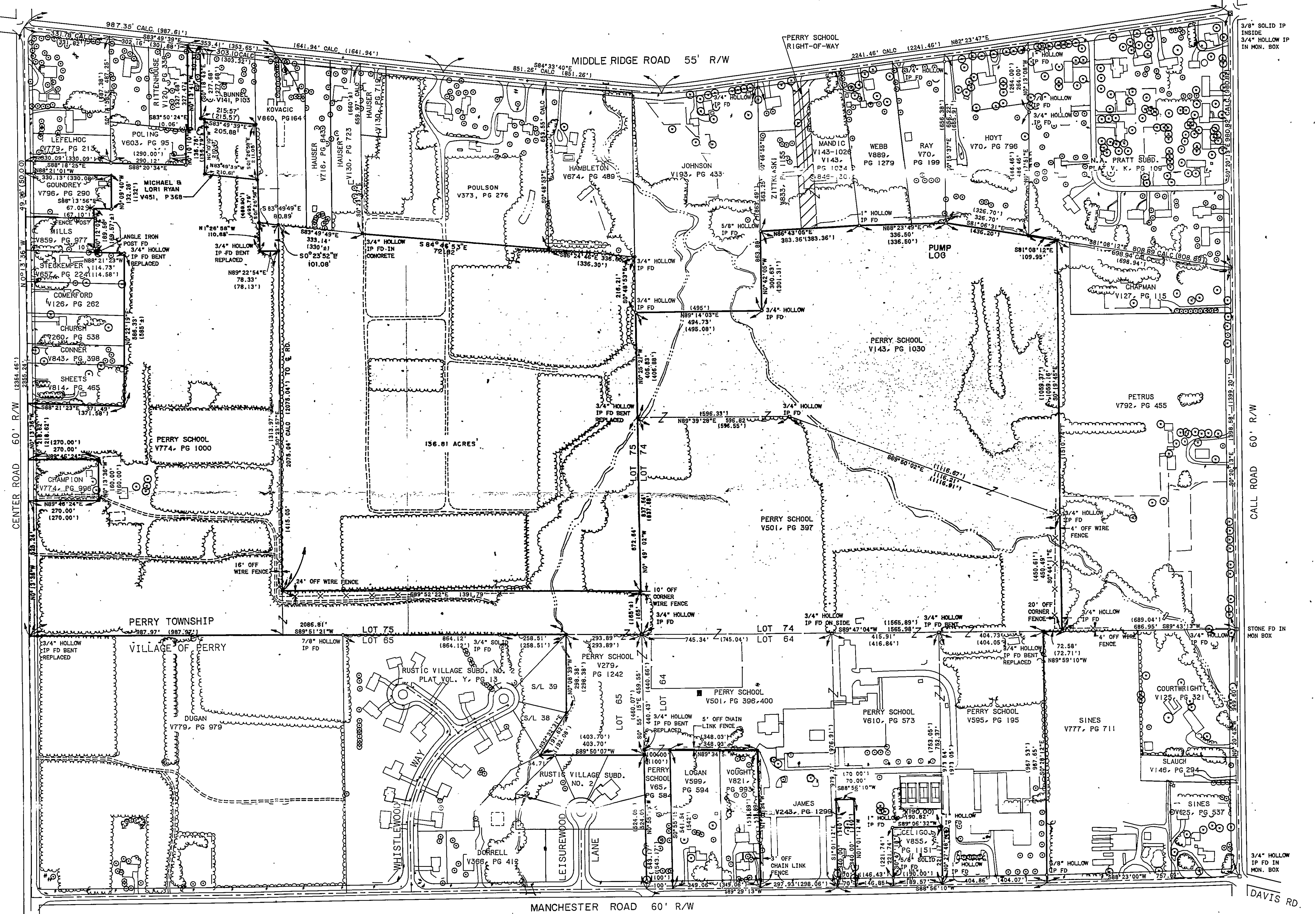


THE BEARING WERE DETERMINED FROM A SOLAR OBSERVATION MADE FROM THE 3/4" IRON PIPE FOUND AT THE NORTHWESTERLY CORNER OF LOT 64 TO THE 3/4" IRON PIPE FOUND AT THE INTERSECTION OF THE WESTERLY LINE OF LOT 64 WITH THE NORTHERLY RIGHT-OF-WAY LINE OF MANCHESTER ROAD.

RECORD INFORMATION WAS OBTAINED FROM THE LAKE COUNTY RECORDERS OFFICE AND THE LAKE COUNTY ENGINEERS OFFICE.

*CHAIN LINK FENCE POST



- LEGEND**
- IRON PIN FOUND
 - CAPPED IRON PIPE SET
 - 100.00 OBSERVED DISTANCE
 - 100.00 CALC CALCULATED DISTANCE
 - (100.00) RECORD DISTANCE
 - AREA TO BE ANNEXED

**ANNEXATION PLAT
FOR PERRY SCHOOLS**

PART OF LOT NO'S. 64, 65, 74 and 75
IN THE VILLAGE OF PERRY AND PERRY TOWNSHIP
LAKE COUNTY, OHIO

APRIL, 1988

SCALE: 1"=200'

PRINTED
JUN 04 1990
BURGESS & NIPLE LIMITED