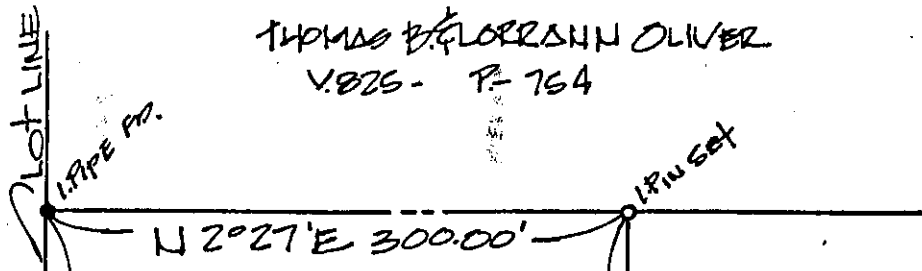
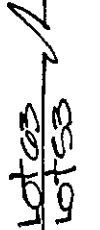


THOMAS & FLORENCE OLIVER
V. 825 - P. 764



DAVID BREWSTER
V. 784 P. 155



227.04'

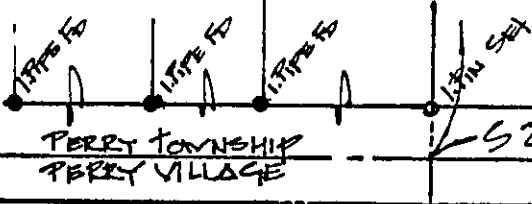
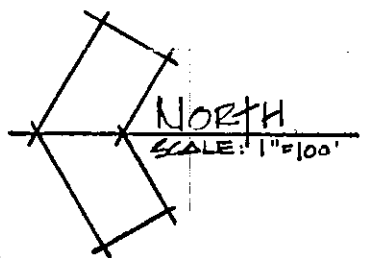
5.701 AC.

LEE LYDK II & JEANNETTE LYDK
V. 858 P. 023

887° 49' E

807.90'

SINES & SONS INC. V. 819 P. 810



CALL ROAD

Proposed