

LOT SPLIT PLAT
for
MIDDLE RIDGE ROAD

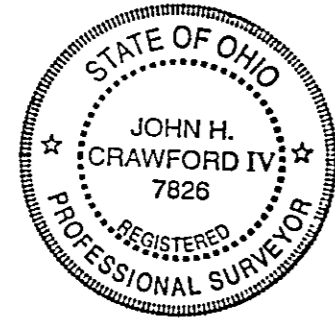
Known as being a part of Cowles Lot Tract No. 2;

TOWNSHIP OF MADISON
COUNTY OF LAKE - STATE OF OHIO

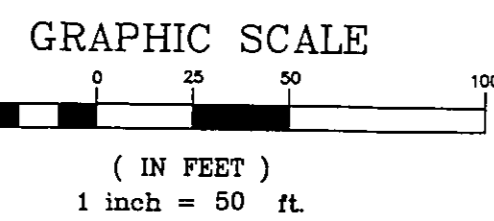
by
McSTEEN & ASSOCIATES, INC.
ENGINEERS & SURVEYORS
26451 Curtiss Wright Parkway
Richmond Heights, Ohio 44143
(216) 797-9800

Bearings shown hereon are to an assumed meridian and are used to denote angles only. Distances are given in feet and decimal parts thereof. All iron pins shown as set are 30" long 1/2" rebar with an identification cap stamped "McSteen & Assoc".

John H. Crawford IV
John H. Crawford IV, Registered Professional Surveyor No. 7826
Job No. 00-256

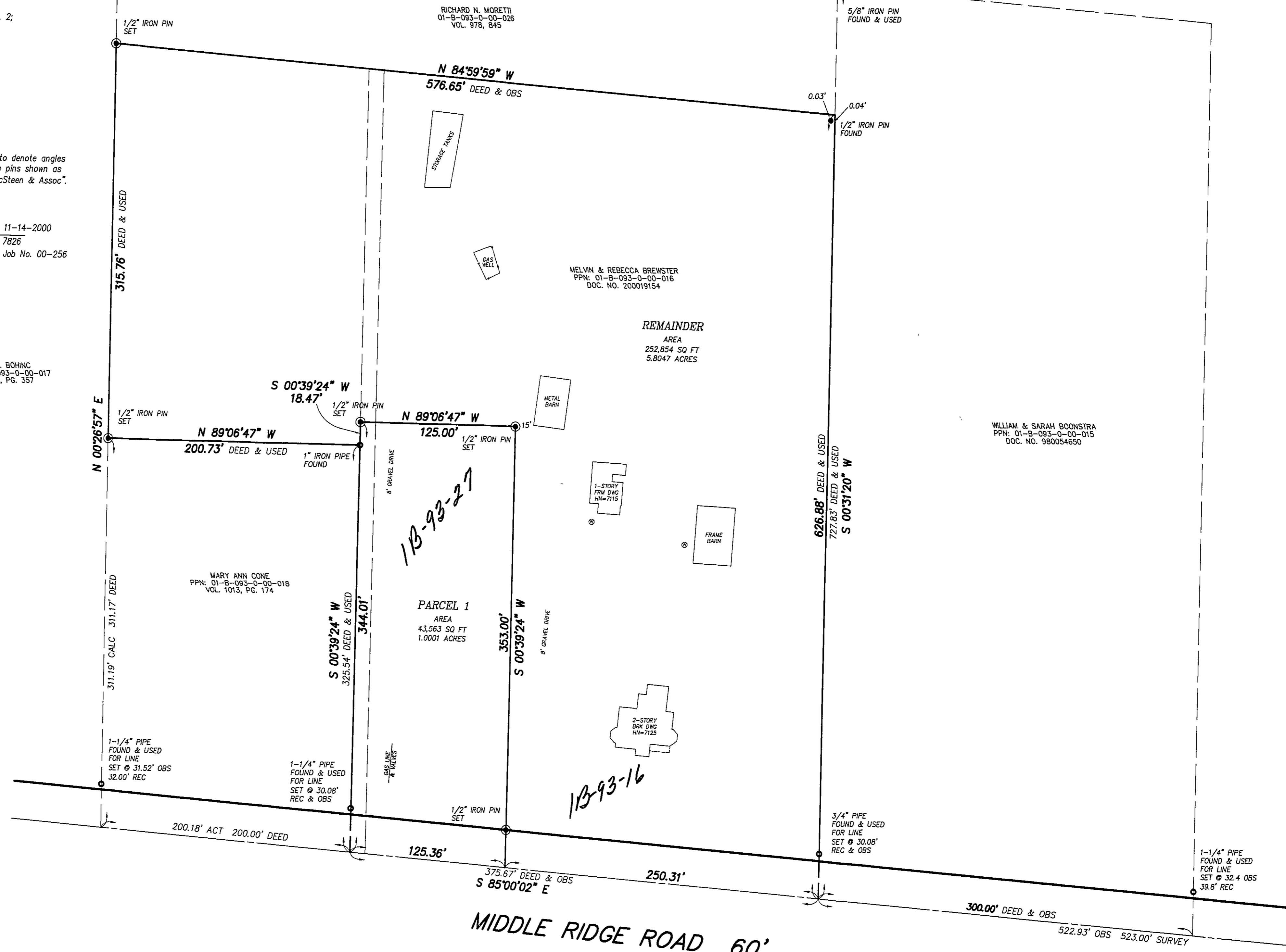


ROSE M. BOHINC
PPN: 01-B-093-0-00-017
VOL. 421, PG. 357



LEGEND

- UTILITY POLE
- ☆ LIGHT POLE
- CLEAN OUT
- ⊙ WATER VALVE
- ⊠ WATER METER
- ⊙ GAS VALVE
- ⊠ GAS METER
- ⊠ AIR CONDITIONING UNIT
- ⊠ TRAFFIC CONTROL BOX
- ⊠ CATCH BASIN
- STORM MANHOLE
- SANITARY MANHOLE
- ⊠ HYDRANT
- ↓ SIGN
- ⊠ BORING
- ⊙ WATER WELL



MIDDLE RIDGE ROAD 60'

BATES ROAD