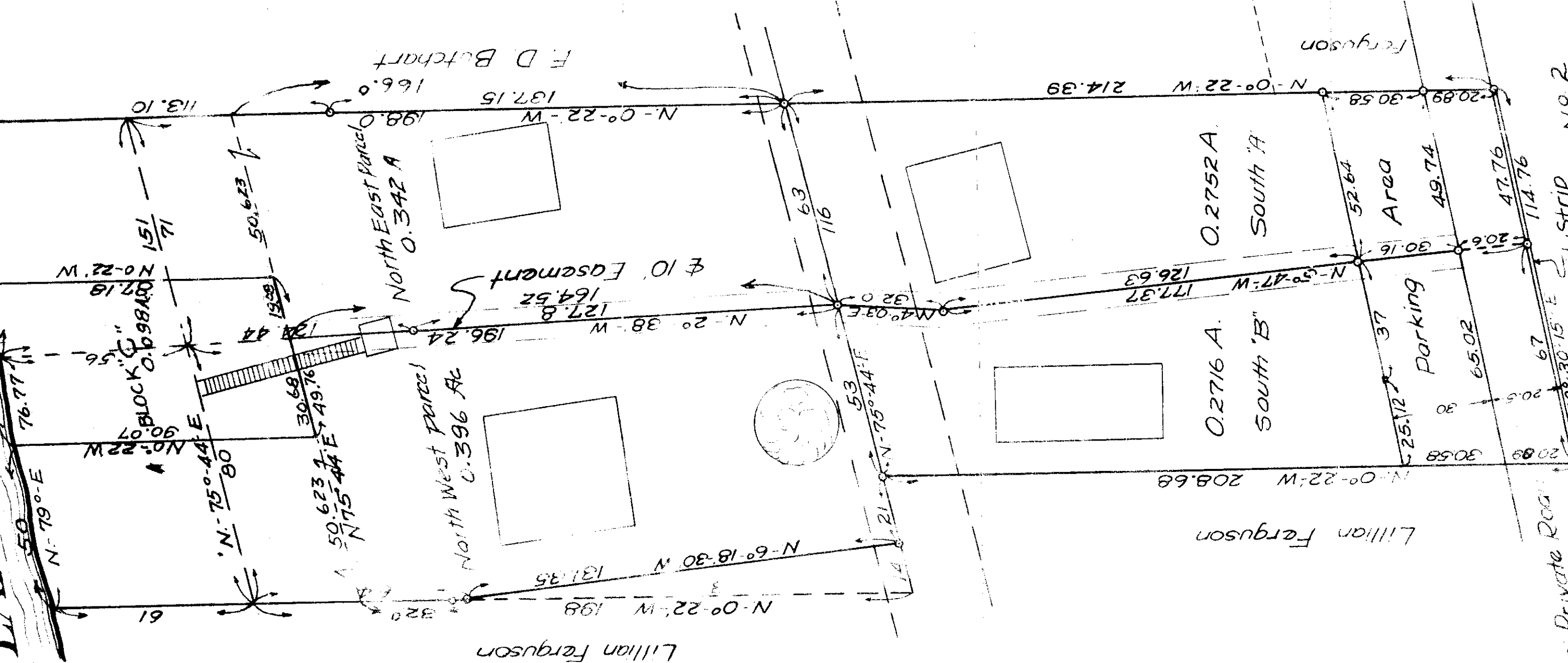


LAKE ERIE



WHITSLAR PROPERTY

Lots 3&4, Elyria, of Lake Front Subdivision
 & Part of Lots 1, 2, & 3, Lynn's Subdivision
 O.L. 2, Tr. 3, Madison Twp., Lake County, Ohio
 Scale 1" = 30'

Nov 1934

PLAT OF SURVEY

Madison Golf Lakelands No 2

Bearings were run to the
 line of North line of Madison
 of Lakelands No 2

J.M. Crabb
 Civil Engineer
 Painesville, Ohio.