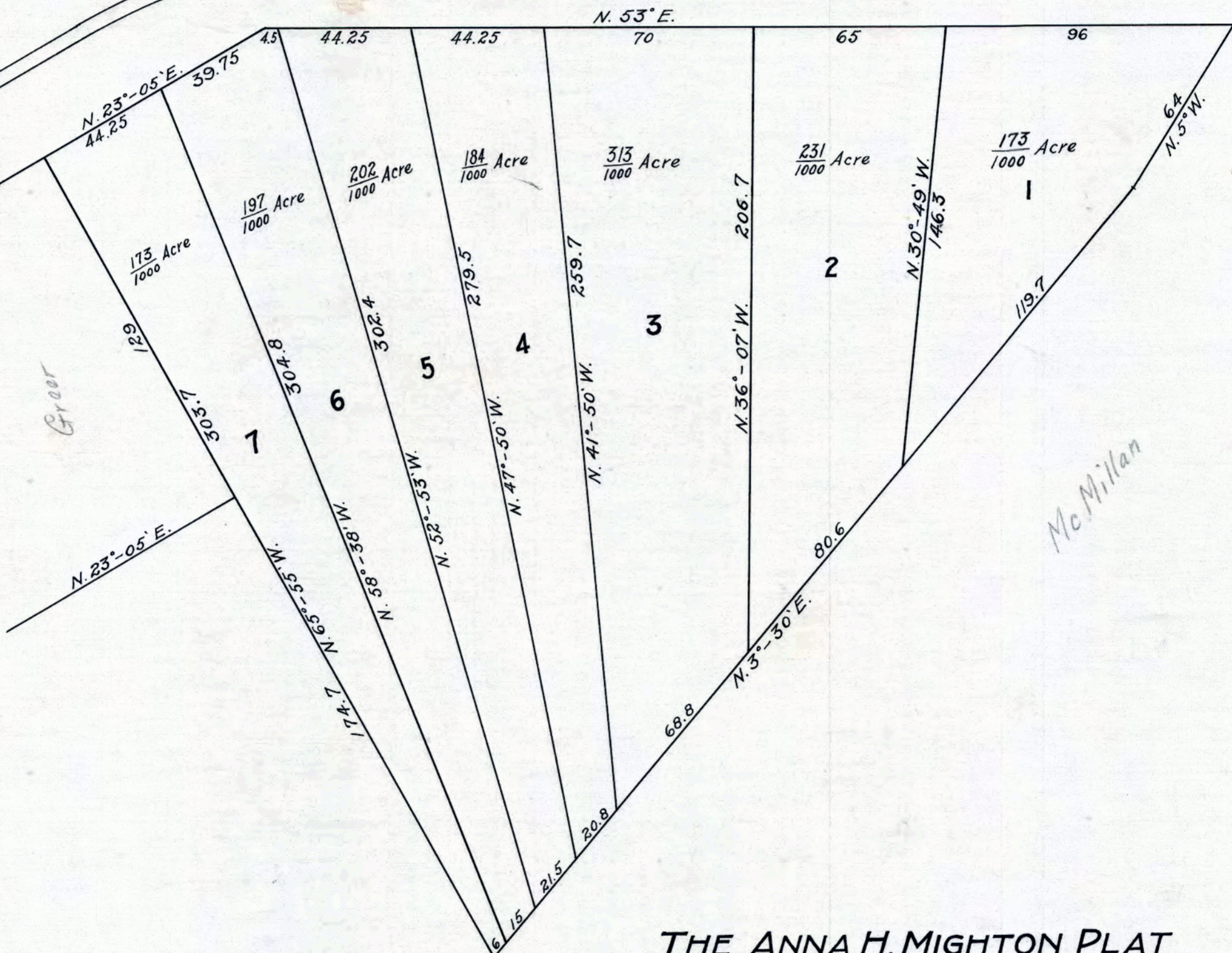


ELM ST.

ERIE ST.



THE ANNA H. MIGHTON PLAT
TRACT 3, PAINESVILLE
- OHIO -

Scale, 1 inch = 40 feet.
 ~ Mch. 6, 1911 ~

CUMINGS & DOWNER
 CIVIL ENGINEERS & SURVEYORS
 Painesville - Ohio

NOTE:-
 Iron pipe stakes were set at all lot corners

1350-1
 2-D
 11

Stake