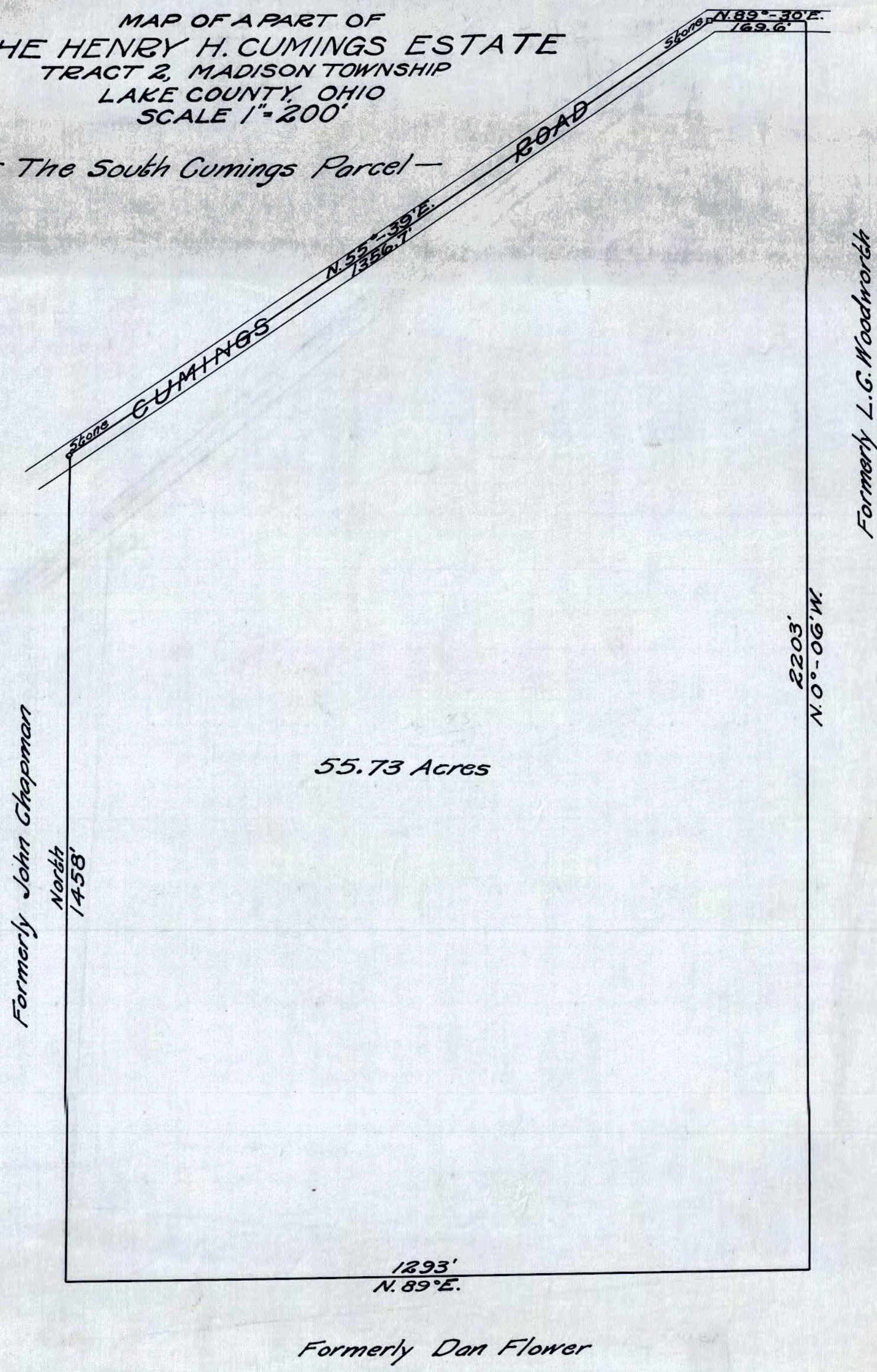


MAP OF A PART OF
THE HENRY H. CUMINGS ESTATE
TRACT 2, MADISON TOWNSHIP
LAKE COUNTY, OHIO
SCALE 1" = 200'

— The South Cumings Parcel —



55.73 Acres

Formerly John Chapman

North
1458'

Formerly L. G. Woodworth

2203'
N. 0° - 06' W.

1293'
N. 89° E.

Formerly Dan Flower