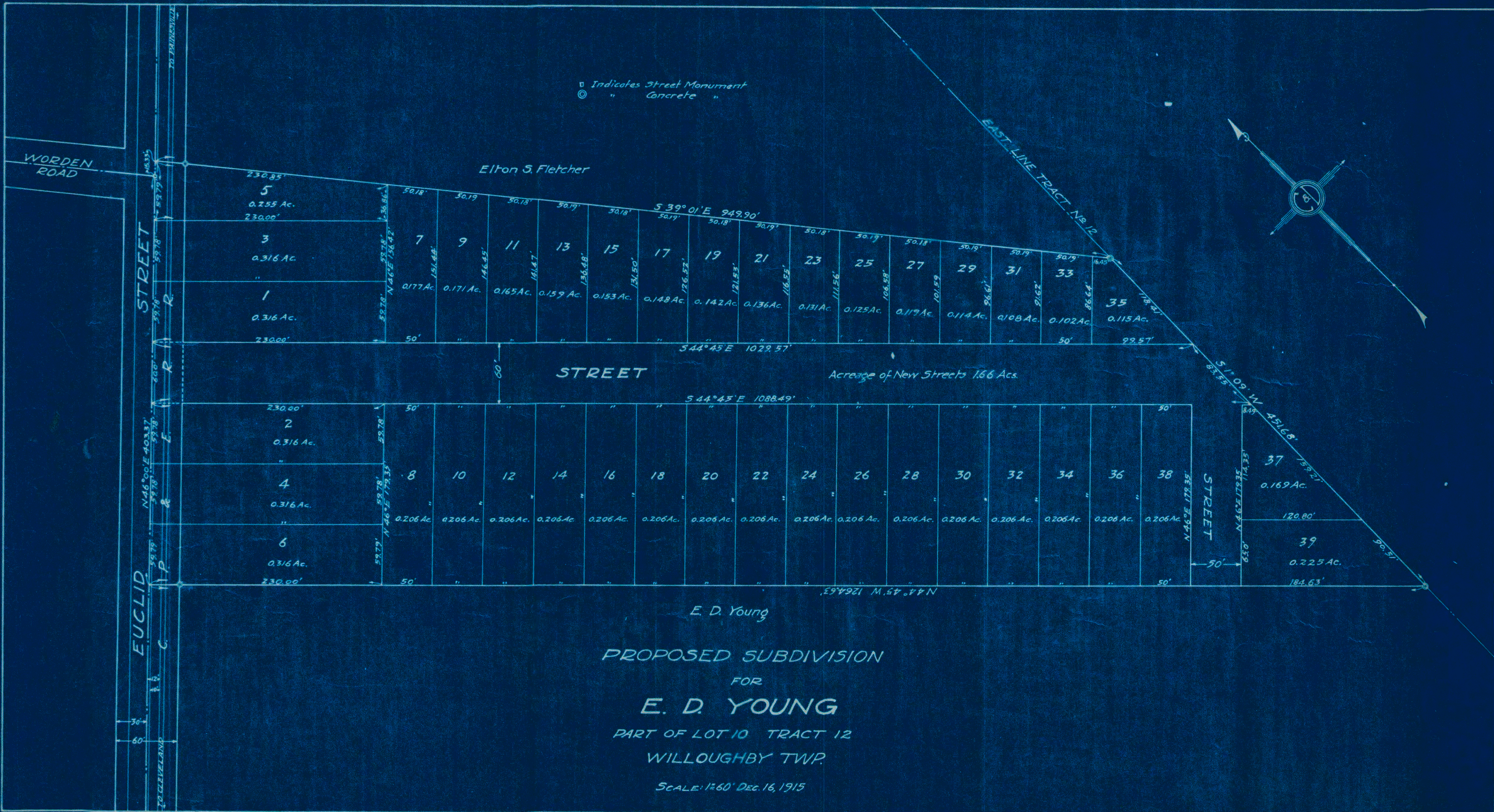
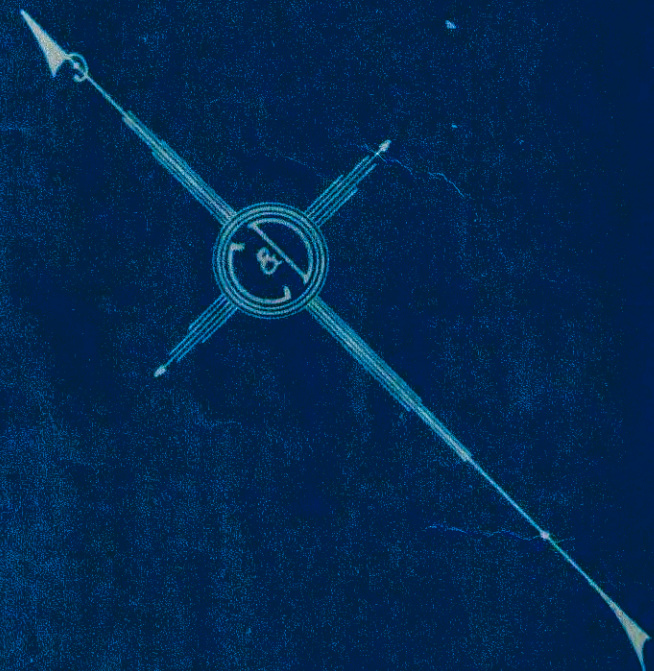


□ Indicates Street Monument  
 ◎ " Concrete "



Elton S. Fletcher

STREET

Acreege of New Streets 1.66 Acs.

STREET

E. D. Young

PROPOSED SUBDIVISION

FOR

E. D. YOUNG

PART OF LOT 10 TRACT 12

WILLOUGHBY TWP.

SCALE: 1"=60' DEC. 16, 1915