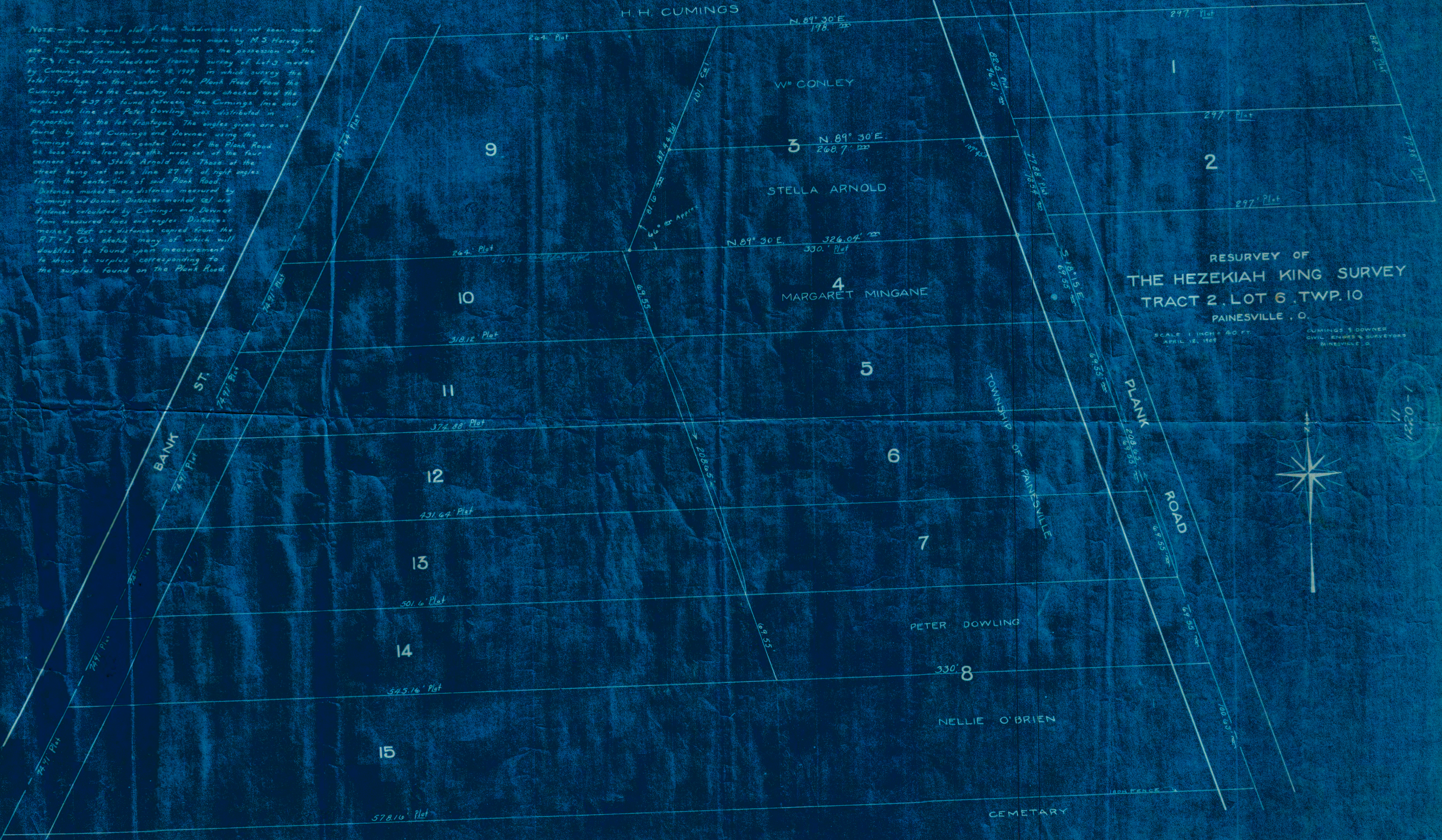


NOTE:— The original plat of this Subdivision has not been recorded. The original survey is said to have been made by M. S. Harvey in 1854. This map is made from a sketch in the possession of the R. T. & I. Co. from deeds and from a survey of Lot 3 made by Cumings and Downer April 12, 1869, in which survey the total frontage on the center of the Plank Road from the Cumings line to the Cemetery line was checked and the surplus of 4.37 ft. found between the Cumings line and the south line of Peter Dowling was distributed in proportion to the lot frontages. The angles given are as found by said Cumings and Downer using the Cumings line and the center line of the Plank Road as base lines. Iron pipe stakes were set at the four corners of the Stella Arnold lot. These at the street being set on a line 27 ft. at right angles from the center line of said Plank Road. Distances marked  $\approx$  are distances measured by Cumings and Downer. Distances marked  $\approx$  are distances calculated by Cumings and Downer from measured lines and angles. Distances marked  $\approx$  are distances copied from the R. T. & I. Co.'s sketch, many of which will doubtless be found upon measurement to show a surplus corresponding to the surplus found on the Plank Road.

H. H. CUMINGS

H. H. CUMINGS



RESURVEY OF  
THE HEZEKIAH KING SURVEY  
TRACT 2, LOT 6, TWP. 10  
PAINESVILLE, O.

SCALE 1 INCH = 40 FT.  
APRIL 12, 1869

CUMINGS & DOWNER  
CIVIL ENGINEERS & SURVEYORS  
PAINESVILLE, O.



1-0321  
11