

Stn. 125
115.5 ft
Ch. Ely, 100 with S. 1. 100. to Highway
Supposed to count 150
399.3

S. 87°-35' E. 1615.5
1216.2

90°-02'

305.9
96.3

S. 87°-58' E. 445.0
1 acre
Survey of Dec. 1, 1905

20 ⁰⁶/₁₀₀ acres.
Survey of Dec. 1, 1905.

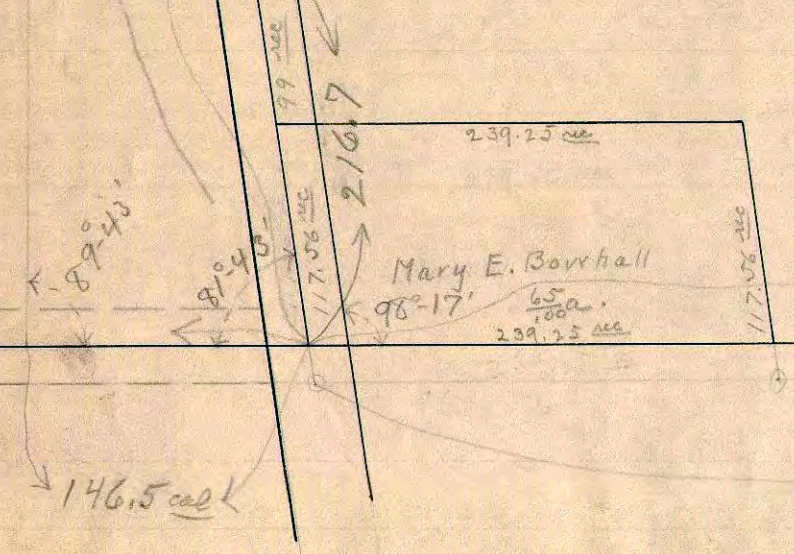
S. 87°-58' E. 459.5
Caroline M. Bowhall to
Cyrus W. Jolly & Seta M. Jolly
Jan. 31, 1896 - Dec. 25, 1898. - 1 acre.
S. 87°-58' E. 473.5

N. 2°-19' E. 973.0

N. 2°-19' E. 480.0

S. 87°-58' E. 1100.9

N. 2°-23' E. 750.4
964.92



Harvey Bowhall
About 4 acres

Mary E. Bowhall
98°-17'

545.8

S. 87°-58' E. 1614.2
1614.2

S. 87°-58' E. 1068.4

1065.4 on 20' offset.

1614.2 on 20' offset

90°-21'