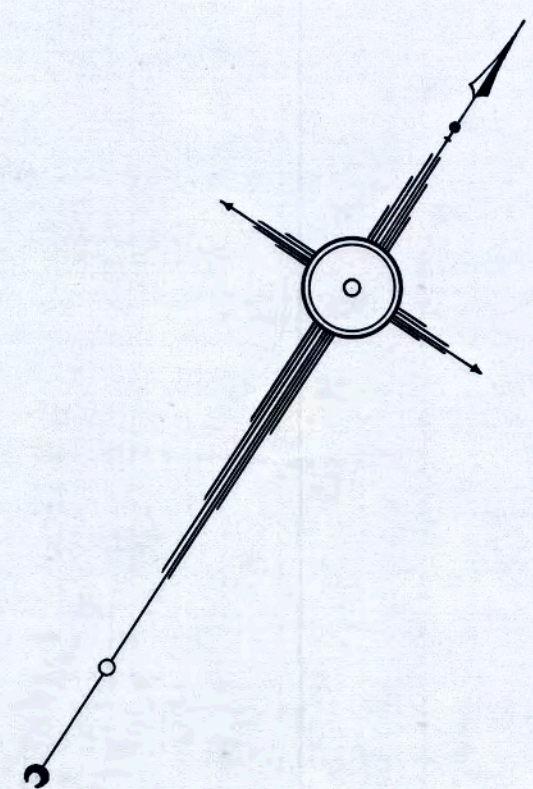
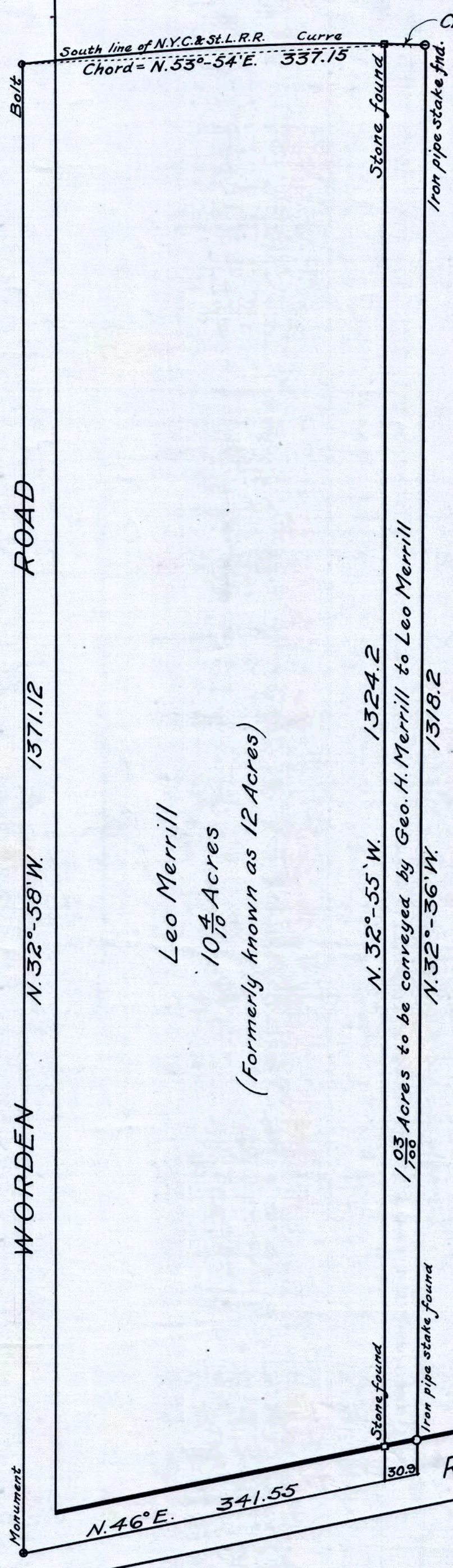


11
1486-1
2-C

EUCLID



SURVEY OF ✓
PART OF TRACT TWELVE
WILLOUGHBY TWP, O
FOR
LEO MERRILL, ESQ. ✓
AUG. 28, 1912
Scale - 1 inch = 100 feet.
CUMINGS & DOWNER ✓
CIVIL ENGINEERS AND SURVEYORS
PAINESVILLE, O.

I hereby certify the annexed plat
and survey to be correct.
Wm. F. Manlove
Deputy County Surveyor.
Painesville, O. - Aug. 28, 1912