

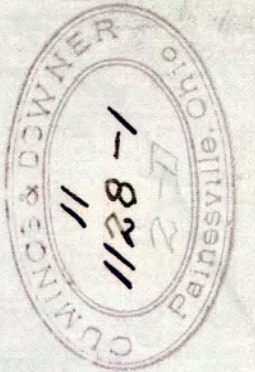
PROPERTY OF
HENRY R. MILLER, ESQ.

Outlots 1 & 2 Tract 3

PAINESVILLE, O.

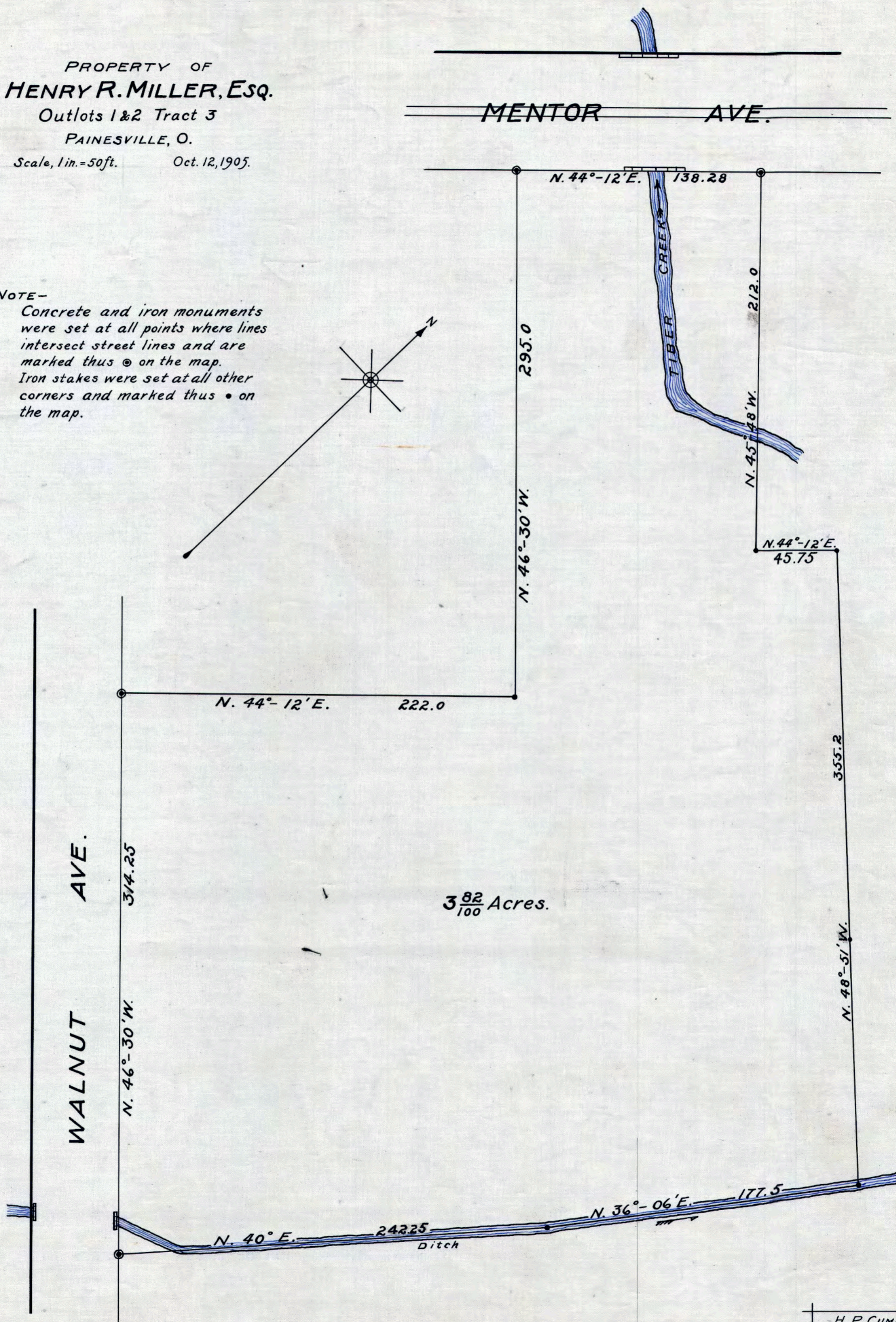
Scale, 1 in. = 50 ft.

Oct. 12, 1905.



NOTE-

Concrete and iron monuments were set at all points where lines intersect street lines and are marked thus \odot on the map. Iron stakes were set at all other corners and marked thus \bullet on the map.



H. P. CUMINGS
F. N. DOWNER
Civil Engineers & Surveyors
Painesville, O.