

RECORD OF SURVEYS,

Plat of *Survey*, No. *77*, Town: *Mentor*, Range

Survey made *January 22 + 24* 1898, at the request of *Van Cleve*
 For the purpose of *finding lines + acreage*

by *Frank M. Barker* County Surveyor.

DESCRIPTION.

Courses distances + contents see plat

CALCULATIONS. *North side Road.*

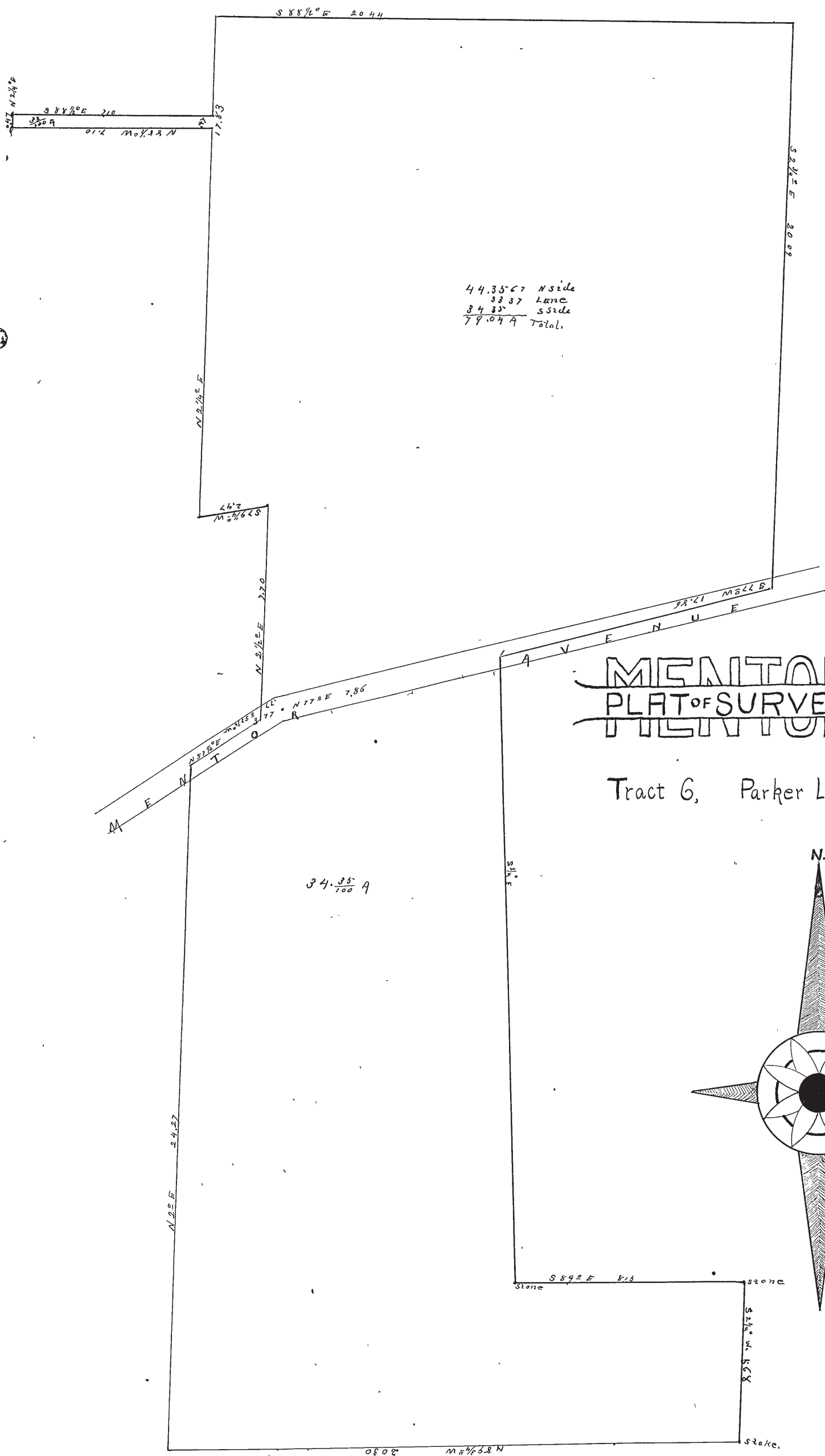
Sta.	Course.	Distance.	Latitude.		Departure.		Double Longitude.	Double Areas.		REMARKS.
			North.	South.	East.	West.		North.	South.	
1	S 88 1/2° E	20.44		53	20.41		21.81		115.593	$\begin{array}{r} 2/8871348 \\ 4488674 \\ \hline 33826 \\ 44.69044A \text{ north part} \end{array}$
2	S 2 1/4° W	20.09		2009		96	41.21		8278134	
3	S 77° W	17.86		401		1742	22.88		917488	
4	S 52 1/2° W	0.77		41		65	4.81		19721	
5	N 2 1/2° E	7.70	769		34		4.50	346050		
6	S 79 3/4° W	2.47		46		242		11132		
7	N 2 1/4° E	17.83	1781		70		70	1.24670	9342068	
			2550	2550	2145	2145		470720	470720	
<i>South side of Road</i>										
1	N 2 1/4° E	24.27	24.26		85		85	206240		
2	N 57 1/2° E	3.77	202		318		488	98576		
3	N 77° E	7.86	176		766		1572	276572		
4	S 3/4° E	22.35		22.32	39		2377		5305464	
5	S 89° E	8.15		14	815		3231		45234	
6	S 2 1/4° E	6.68		568	77		4053		2302104	
7	N 89 3/4° W	20.30	10		2030		2030	203000	2302104	
			28.14	28.14	2030			788458	7652802	
									783458	
									76869844	
									3484572	<i>A S side</i>
									4469	
									79.08672	<i>Total</i>

I, *Frank M. Barker* County Surveyor of Lake County, Ohio, do hereby certify, that I have surveyed and subdivided Lot. No. *Parker* lot in Tract No. *6* Township of *Mentor* in accordance with the statutes of Ohio, and the laws of the United States.

Surveyed pursuant to the application of *Van Cleve* and *Jenny Barker* A. D. 1898
 County Surveyor.

} *Flagmen.*
 } *Markers.*
} *Tapemen.*

LAKE COUNTY, OHIO.



MENTAD
PLAT OF SURVEY
TILITON

Tract G, Parker Lot.

