

# RECORD OF SURVEYS,

Plat of *Survey*, No. *68*, *Madison* Town *12*, Range *6*

Survey made *November 24 & 25* 1896, at the request of *J. Burdick*  
 For the purpose of *Securing corners with monuments - and quantity - & conveying to*  
*Wallace Bennett* by *Frank M. Barker* County Surveyor.

**DESCRIPTION.**

Beginning in the center of the *Haines Road* at a stone which marks the *SW. corner* of land owned by *James Murphy*. Thence *S 88° E (11.57)* Eleven Chains & fifty seven links. Thence *N. 2 1/4° E (18.22)* Eighteen Chains & twenty two links. Thence *S 88 1/2° E (8.89)* eight Chains & eighty nine links. Thence *S 3 1/4° W (13.13)* Thirteen Chains & fifteen links. Thence *S 87 1/2° E (11.53)* Eleven Chains & fifty three links. Thence *S 2° W (1.99)* one Chain & twenty nine links. Thence *N 87 1/2° W (1.99)* one Chain & twenty nine links. Thence *S 2° W (7.29)* Seven Chains & twenty nine links. Thence *S 80 1/2° W (9.59)* nine Chains and sixty nine links. Thence *S 3 1/4° W (2.11)* Two Chains and eleven links. Thence *N. 87 1/4° W (20.44)* Twenty Chains & forty four links to the center of the *Haines Road* and at a stone in the center of said road. Thence *N 3 1/4° E (8.11)* eight Chains & eleven links to the place of beginning. and containing *42 2/100* Acres of Land.

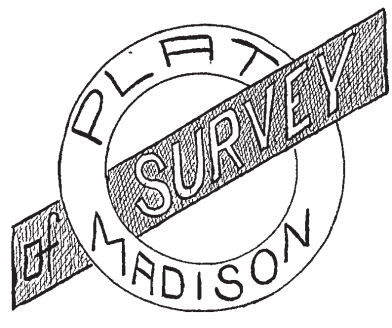
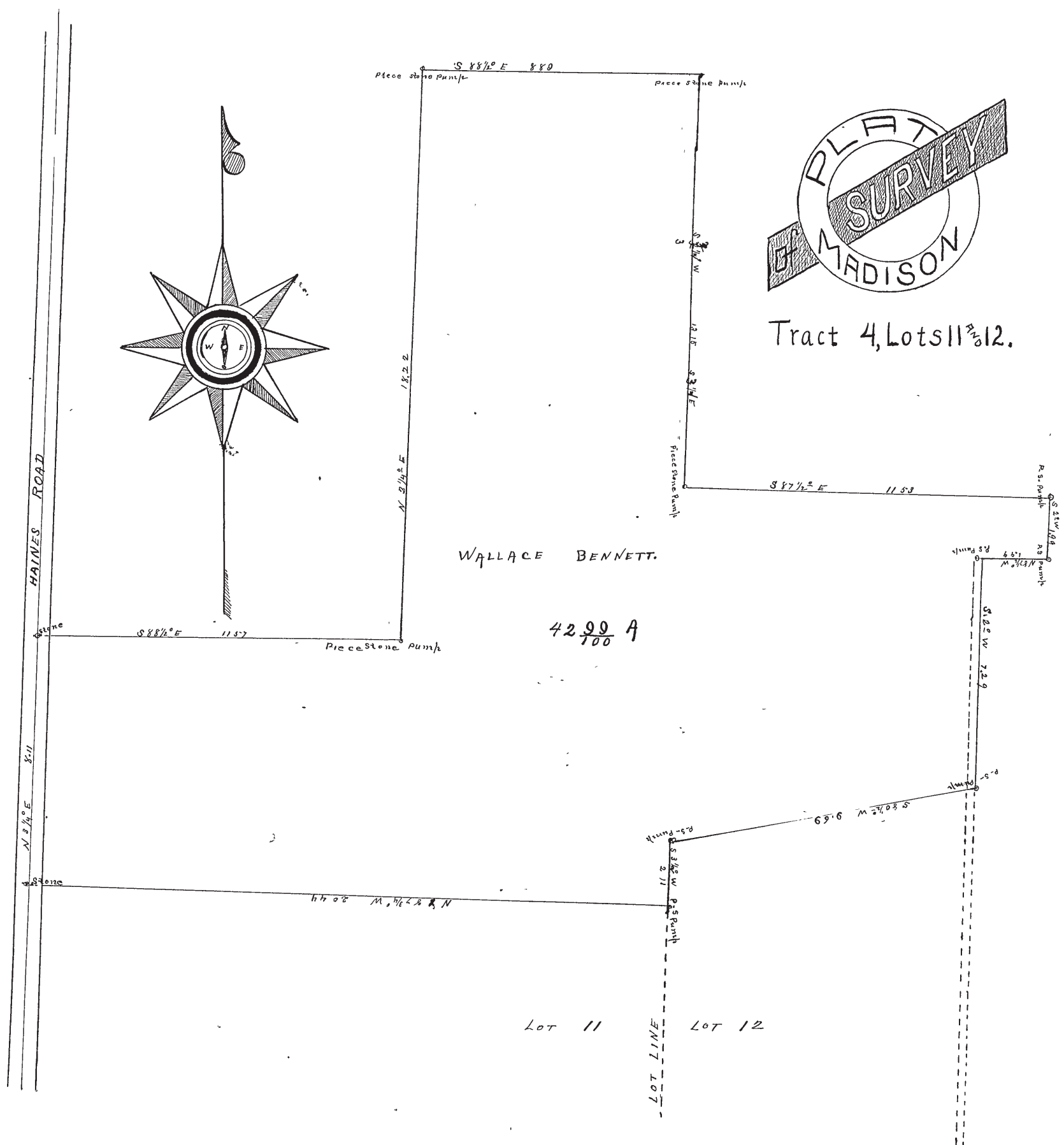
**CALCULATIONS.**

Sta.	Course	Distance.	Latitude.		Departure..		Double Longitude.	Double Areas.		REMARKS.
			North.	South.	East.	West		North	South.	
	<i>S 88 1/2° E</i>	<i>11.57</i>		<i>30</i>	<i>11.57</i>					
	<i>N 2 1/4° E</i>	<i>18.22</i>	<i>18.19</i>		<i>80</i>					
	<i>S 88 1/2° E</i>	<i>8.89</i>		<i>23</i>	<i>8.89</i>					
	<i>S 3 1/4° W</i>	<i>13.13</i>		<i>13.13</i>	<i>2</i>	<i>80</i>				
	<i>S 87 1/2° E</i>	<i>11.53</i>		<i>50</i>	<i>11.52</i>					
	<i>S 2° W</i>	<i>1.99</i>		<i>1.99</i>		<i>07</i>				
	<i>N 87 1/2° W</i>	<i>1.99</i>	<i>8</i>			<i>199</i>				
	<i>S 2° W</i>	<i>7.29</i>		<i>7.29</i>		<i>25</i>				
	<i>S 80 1/2° W</i>	<i>9.59</i>		<i>1.63</i>		<i>9.56</i>				
	<i>S 3 1/4° W</i>	<i>2.11</i>		<i>2.11</i>		<i>13</i>				
	<i>N 87 1/4° W</i>	<i>20.44</i>	<i>81</i>			<i>20.42</i>				
	<i>N 3 1/4° E</i>	<i>8.11</i>	<i>810</i>		<i>44</i>					
			<i>27.18</i>	<i>27.18</i>	<i>33.22</i>	<i>33.22</i>				
					<i>42 2/100 A</i>					

I, *Frank M. Barker* County Surveyor of *Lake County, Ohio*, do hereby certify, that I have surveyed and subdivided *Lots No. 11 & 12* in *Tract No. 4* Township of *Madison* in accordance with the statutes of *Ohio*, and the laws of the United States. Surveyed pursuant to the application of *J. Burdick* and *Nov 24 & 25* A. D. 1896 *Frank M. Barker* County Surveyor.

} *Flagmen.*  
 } *Markers.* } *Tapemen.*

LAKE COUNTY, OHIO.



Tract 4, Lots 11 & 12.