

RECORD OF SURVEYS,

Plat of *Survey*, No. *189*, *Perry Twp* Town Lots *89, 90 & 99*, Range

Survey made *Nov 27/18* 189, at the request of *Geo. Blackmore*
 For the purpose of *determining the number of acres in farm.*

by _____ County Surveyor.

DESCRIPTION.

CALCULATIONS.

Sta.	Course.	Distance.	Latitude.		Departure.		Double Longitude.	Double Areas.		REMARKS.
			North.	South.	East	West.		North.	South.	
	<i>N 86-33-30 W</i>	<i>3876.54</i>	<i>98.64</i>			<i>3875.65</i>	<i>382293</i>			
	<i>N 1-36-40 E</i>	<i>1440.33</i>	<i>1439.76</i>		<i>40.50</i>	<i>7710.80</i>	<i>11101700</i>			
	<i>S 64-19-30 E</i>	<i>128.15</i>		<i>55.52</i>	<i>115.50</i>	<i>7554.80</i>		<i>419466</i>		
	<i>N 62-11-30 E</i>	<i>4205.35</i>	<i>1961.84</i>		<i>3719.65</i>	<i>3719.65</i>	<i>7297335</i>			
	<i>South</i>	<i>3444.20</i>		<i>3444.20</i>			<i>18781328</i>			
			<i>3500.24</i>	<i>3499.72</i>	<i>3875.65</i>		<i>419466</i>			
				<i>.24</i>			<i>18361862</i>			
							<i>9180931</i>			
										<i>210.76</i>
	<i>3876.54 = 3</i>	<i>5884398</i>		<i>3.5884442</i>		<i>3875.65</i>	<i>3875.65 = 3.5883389</i>		<i>43560</i>	<i>9180931</i>
		<i>8.4056073</i>		<i>9.9998593</i>		<i>7751.80</i>	<i>98.64 = 1.9910515</i>			<i>87120</i>
		<i>1.9940515</i>		<i>1.5883035</i>		<i>40.50</i>	<i>55823960 = 382293.</i>			<i>46893</i>
				<i>3875.28</i>		<i>7710.80</i>				<i>43560</i>
	<i>1440.33 = 3</i>	<i>1584530</i>		<i>3.1584620</i>		<i>7670.30</i>	<i>7710.80 = 3.8870994</i>			<i>333310</i>
		<i>9.9998283</i>		<i>8.4489456</i>		<i>40.50</i>	<i>1439.76 = 3.1582903</i>			<i>304920</i>
		<i>3.1382903 = 1439.76</i>		<i>1.6074076 = 40.495</i>		<i>115.50</i>	<i>7.0453897 = 11101700</i>			<i>283900</i>
	<i>128.15 = 2</i>	<i>11077186</i>		<i>2.11077186</i>		<i>7439.30</i>	<i>7554.80 = 3.8782230</i>			<i>261360</i>
		<i>9.6367545</i>		<i>9.9548531</i>		<i>3719.65</i>	<i>55.52 = 1.7444731</i>			
		<i>1.7444731 = 55.523</i>		<i>2.0625717 = 115.50</i>			<i>56226961 = 419466.</i>			
	<i>4205.35 = 3</i>	<i>6237970</i>		<i>3.6237970</i>		<i>3719.65</i>	<i>3719.65 = 3.5705013</i>		<i>43560</i>	<i>629550</i>
		<i>9.6688659</i>		<i>9.9467043</i>			<i>1961.84 = 3.2926629</i>			<i>43560</i>
		<i>3.2926629 = 1961.84</i>		<i>3.5705013 = 3719.65</i>			<i>68631642 = 7297335.</i>			<i>193950</i>
	<i>3444.20 = 3</i>	<i>5370884</i>		<i>3.</i>						<i>174240</i>
				<i>152.5</i>	<i>120</i>	<i>105.5</i>				<i>144000</i>
				<i>600</i>	<i>1000</i>	<i>600</i>				<i>84000</i>
				<i>91500.0</i>	<i>72000.</i>	<i>64500.</i>				<i>124500</i>
						<i>58500.</i>				<i>91500</i>
										<i>72000</i>
										<i>64500</i>
										<i>58500</i>
										<i>66150</i>
										<i>228600</i>
										<i>228600</i>

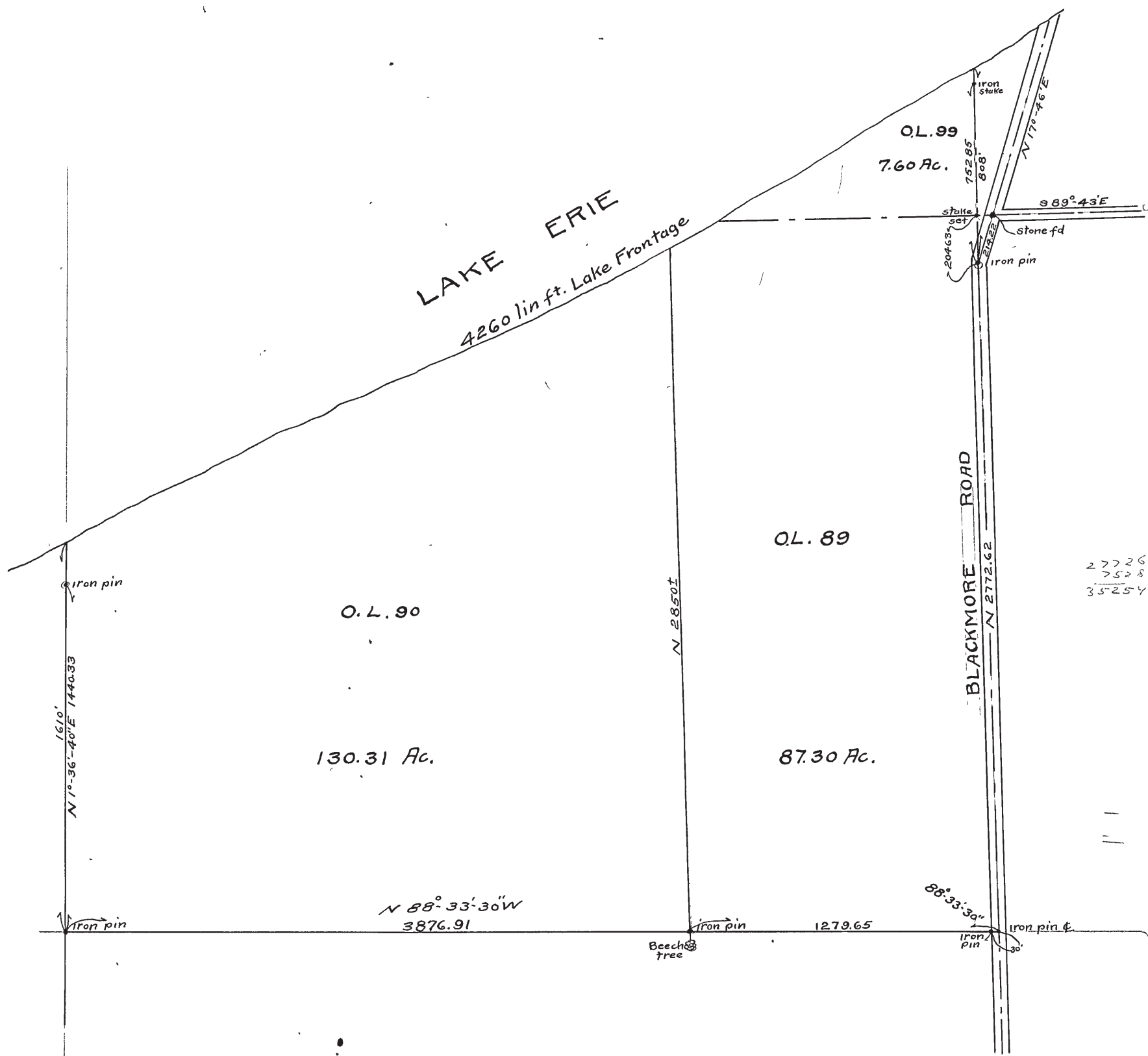
I, _____ County Surveyor of Lake County, Ohio, do hereby certify, that I have surveyed and subdivided Lot. No. _____ in Tract No. _____ Township of _____ in accordance with the statutes of Ohio, and the laws of the United States.

Surveyed pursuant to the application of _____ and _____ A. D. 189 _____ County Surveyor.

} Flagmen.
 }
 } Markers.

}
 } Tapmen.

LAKE COUNTY, OHIO.



13031
 8730
 2776
 7528
 3525

SURVEY OF LANDS OF
 CORA L. & DAVID P. BLACKMORE
 LOTS 89-90 & 99 PERRY TWP.
 scale 1" = 400ft. LAKE CO. O.

FB #98 pg 80