

Record of Surveys,

Plat of Survey, No. 88, Mentor Town 10, Range 7

Survey made March 27th 1880, at the request of Horace Rider
For the purpose of locating line

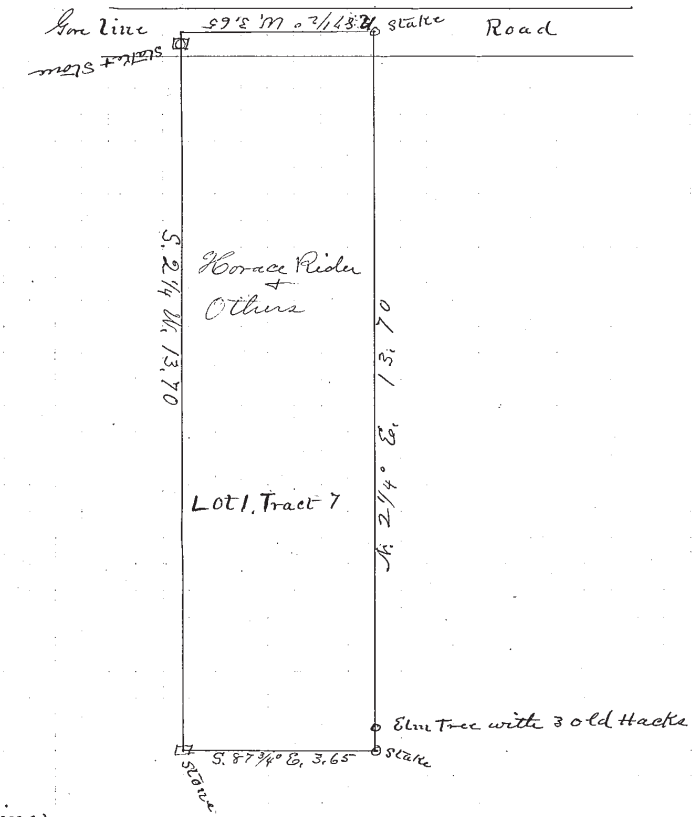
by H. N. Munson County Surveyor.

DESCRIPTION.

Survey of a part of Lot 10.1, in Tract No. 7 Beginning in the center of the line Road, at the North East corner of U. C. Salvo's land thence with the east line of land S. 2 1/4 W. 13 chains + 70 links to a stone thence S. 87 3/4 E. 3 chains + 65 links to a stake thence N. 2 1/4 E. 13 chains and 70 links to a stake in center of said road, thence N. 87 1/2 W. 3 chains + 65 links to the place of beginning containing 5 acres of land

CALCULATIONS.

Table with columns for Sta., Course, Distance, Latitude (North/South), Departure (East/West), Double Longitude, Double Area (North/South), and REMARKS.



Scale two chains to one inch.

I, H. N. Munson County Surveyor of Lake County, Ohio, do hereby certify, that I have surveyed and subdivided Lot No. one in Tract No. 7 in Township of Mentor in accordance with the statutes of Ohio, and the laws of the United States. Surveyed pursuant to the application of Horace Rider and March 27th A. D. 1880

H. N. Munson County Surveyor. H. N. Munson Tapemen. Horace Rider Tapemen.