

# Record of Surveys,

# Lake County, Ohio.

Plat of *Survey*, No. *70*, *Concord* Town *10*, Range *8*

Survey made *September 3<sup>rd</sup>* 188*9*, at the request of *William Sawyer*  
For the purpose of *locating lines and conveying land*

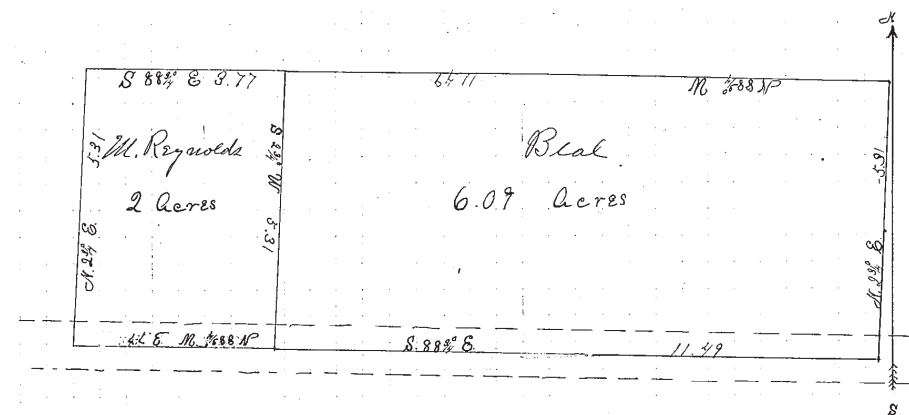
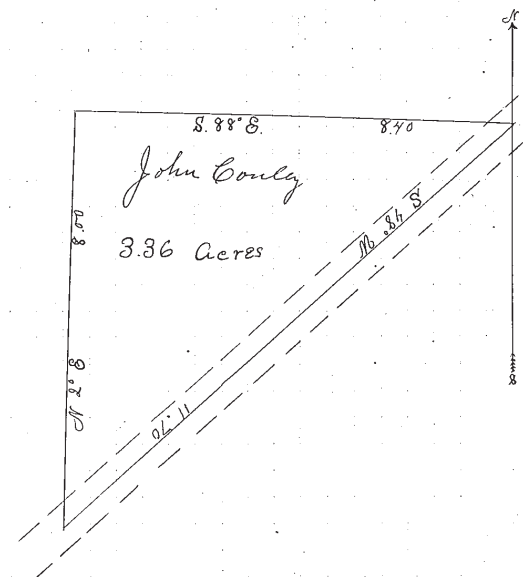
by *D. N. Munson* County Surveyor.

### DESCRIPTION.

*Survey of parts of Lot No. 2 in Tract No. 4 Concord Township*

### CALCULATIONS.

Sta.	Course.	Distance.	Latitude.		Departure.		Double Longitude.	Double Areas.		REMARKS.
			North.	South.	East.	West.		North.	South.	
	<i>N 2 1/2° E</i>	<i>5.91</i>	<i>5.30</i>		<i>25</i>		<i>779</i>	<i>412870</i>		<i>Sold to Mortimer Reynolds</i>
	<i>S 88 1/2° E</i>	<i>3.77</i>		<i>9</i>	<i>3.77</i>		<i>377</i>	<i>3373</i>		
	<i>S 2 1/2° W</i>	<i>5.31</i>		<i>5.30</i>		<i>25</i>	<i>427</i>	<i>19256</i>		
	<i>N 88 1/2° W</i>	<i>9.77</i>	<i>9</i>			<i>3.77</i>	<i>427</i>	<i>3843</i>		
			<i>5.37</i>	<i>5.37</i>	<i>4.02</i>	<i>4.02</i>		<i>41671.9</i>	<i>16643</i>	
								<i>16643</i>		
								<i>27460070</i>		<i>2.00 Acres</i>
	<i>S 88 1/2° E</i>	<i>11.49</i>		<i>25</i>	<i>11.49</i>		<i>1149</i>	<i>28725</i>		<i>Sold Beal</i>
	<i>N 2 1/2° E</i>	<i>5.31</i>	<i>5.30</i>		<i>25</i>		<i>2323</i>	<i>1231190</i>		
	<i>N 88 1/2° W</i>	<i>11.49</i>	<i>25</i>		<i>11.49</i>		<i>1199</i>	<i>29975</i>		
	<i>S 2 1/2° W</i>	<i>5.31</i>		<i>5.30</i>	<i>25</i>	<i>25</i>		<i>14250</i>		
			<i>5.55</i>	<i>5.55</i>	<i>11.74</i>	<i>11.74</i>		<i>1261165</i>	<i>42975</i>	
								<i>42975</i>	<i>42975</i>	
								<i>217218190</i>		<i>6.09 Acres</i>
	<i>N 2° E</i>	<i>8.00</i>	<i>7.99</i>		<i>28</i>		<i>28</i>	<i>22372</i>		<i>Sold to John Couly</i>
	<i>S 88° E</i>	<i>8.40</i>		<i>29</i>	<i>8.40</i>		<i>896</i>	<i>25984</i>		
	<i>S 48° W</i>	<i>11.70</i>		<i>7.70</i>		<i>8.68</i>	<i>868</i>	<i>668360</i>		
			<i>7.99</i>	<i>7.99</i>	<i>8.68</i>	<i>8.68</i>		<i>22372</i>	<i>694344</i>	
									<i>22372</i>	
								<i>21571972</i>		<i>3.36 Acres</i>



I, *D. N. Munson*, County Surveyor of Lake County, Ohio, do hereby certify, that I have surveyed and subdivided Lot No. *2* in Tract No. *4* Township of *Concord* in accordance with the statutes of Ohio, and the laws of the United States. Surveyed pursuant to the application of *William Sawyer* and *Sept 3<sup>rd</sup>* A. D. 188*9* *D. N. Munson* County Surveyor.

Flagmen. \_\_\_\_\_  
Markers. \_\_\_\_\_  
Tapemen. \_\_\_\_\_