

Record of Surveys,

Lake County, Ohio

Plat of Leo Paruly Road, No. 57, Perry, Town 11, Range 7

Survey made December 21st 1888, at the request of Co. Commissioners
For the purpose of laying out two new roads

by H. N. Munson County Surveyor.

DESCRIPTION.

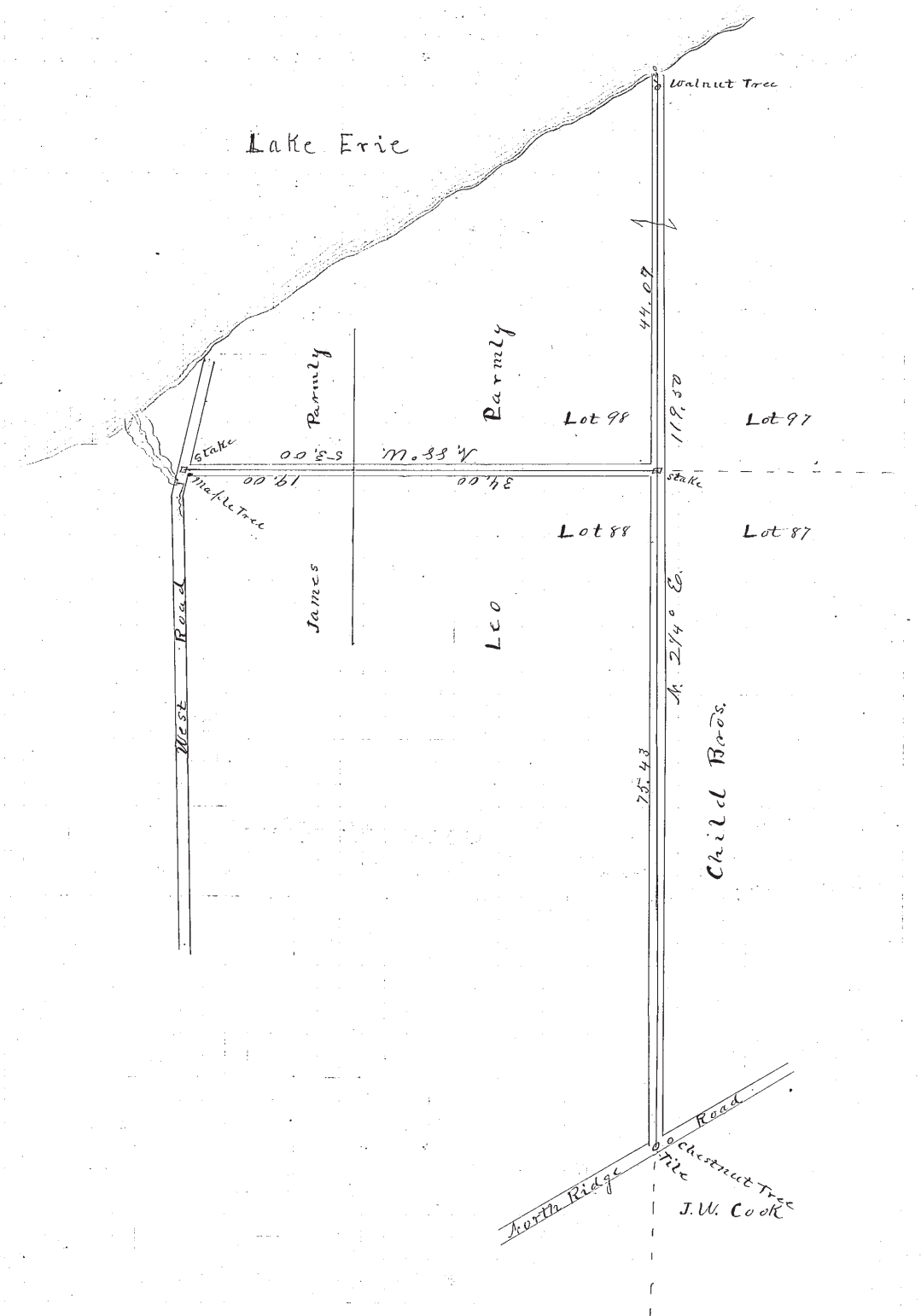
Beginning in the center of North Ridge Road and in the line of Lots Nos. 77 + 78, at a piece of Hard Tile from which a Chestnut tree about 3 feet in diameter bears N. 82° E. 73 feet distant. Thence N. 2 1/4° E. along the west line of Lots 77-87 + 97 (at 75.43 the N.W. cor. of Lot 87 found a stake, at 118.36 the center of a Black Walnut tree marked with 3 hacks) 119 chains + 50 links, to the bank of Lake Erie.

Also Road No. 2 Beginning in the center of the above described road at the corner of Lots 88, 89, 97 + 98. Thence N. 88° 0' W with the North line of Lots 88 + 89 (at 34 chains the west line of Lot 88, being the line between James L. Paruly + Leo Paruly land) 53 chains to a stake in the center of the West road, from which a soft-Maple tree 6 inches in diameter bears S. 52 1/2° E. 24 feet distant

CALCULATIONS.

Table with columns: Sta., Course, Distance, Latitude (North, South), Departure (East, West), Double Longitude, Double Areas (North, South), REMARKS.

I, H. N. Munson County Surveyor of Lake County, Ohio, do hereby certify, that I have surveyed and subdivided Lot No. ... in Tract No. ... in accordance with the statutes of Ohio, and the laws of the United States. Surveyed pursuant to the application of Co. Commissioners and Leo Paruly Dec 21st A. D. 1888



North Ridge Road
Chestnut Tree
J. W. Cook