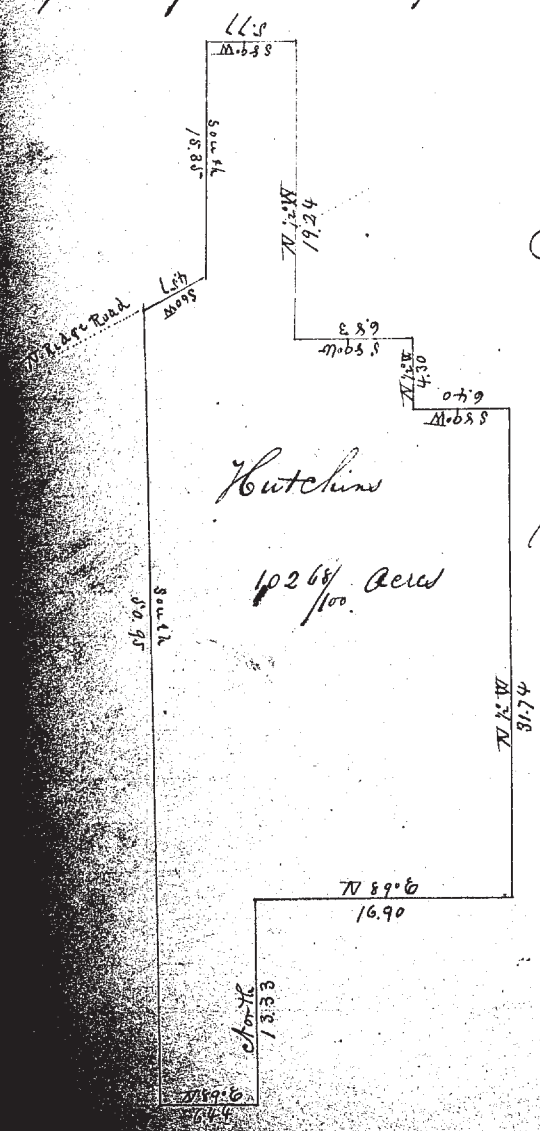


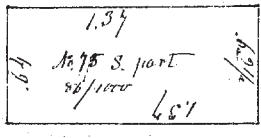
No 6 } Resurvey of a piece of Land for Mr Hutchins
 situated in and being parts of lots nos 67, 68 &
 75 in Township No 11 Range Perry Township commencing
 at a post standing 19.61 chains East from the S.W. corner of
 lot 68 on the south line of said lot thence at 89° E 6.44 chains
 thence North 13.33 chains thence at 89° E 16.90 chains thence
 at 72° W 31.74 chains thence S 89° W 6.40 thence at 72° W 4.30 chains
 thence S 89° W 6.83 chains thence at 72° W 19.24 chains thence
 S 89° W 5.77 chains thence South 15.35 chains thence S 60° W
 4.57 chains thence South 50.95 chains to the place of
 beginning containing One Hundred Two acres and $\frac{68}{100}$



Elnathan Gray } Chairman
 Thomas Cook } Sworn

I certify this a true
 Survey
 Jarvis S. Peto
 County Surveyor for Lake Co. O
 June 9th 1840

No 7 } Survey of the South part of Lot No 75 (Merch
 survey of the village of Milwaukie in Perry Twp
 No 10 being land purchased by Reuben Hitchcock at a sale of
 lands forfeited to the State of Ohio for the nonpayment of taxes
 on the 11th day of December 1843. viz. commencing at a stone
 on the S. E. corner of said Lot No 75 and which is also at the
 intersection of the 112th line of Erie Street with the North line
 of Spaulding Street. thence N. on the N. line of Spaulding St
 1 Chain 37 Links; thence N. on the N. line of Lot 64 Links to
 the Fore line so called thence E. on the Fore line 1 Chain 37
 Links to the N. line of Erie Street; thence S. on Erie Street
 62 1/2 Links to the place of beginning. Containing eighty six
 thousandths of an acre of land.



Wm. Dunham }
 William Baker } Chairman

I hereby certify the above to be a true survey
 Jan. 10 - 1844
 Colburn Huntington Co. Surveyor
 Lake County Ohio