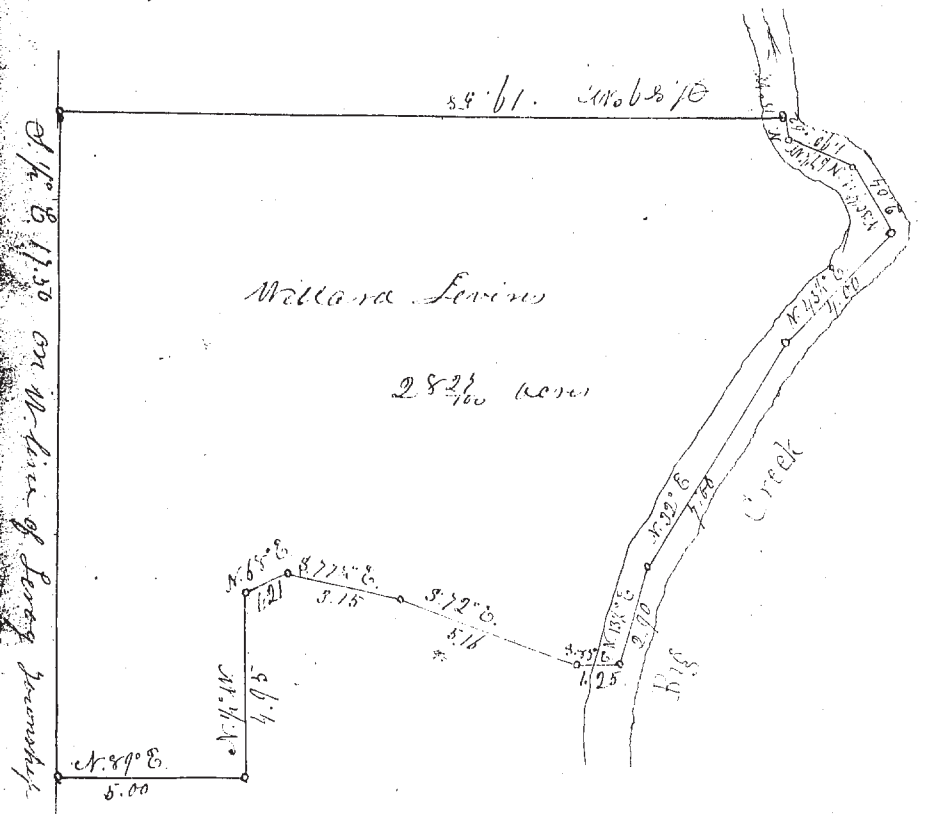


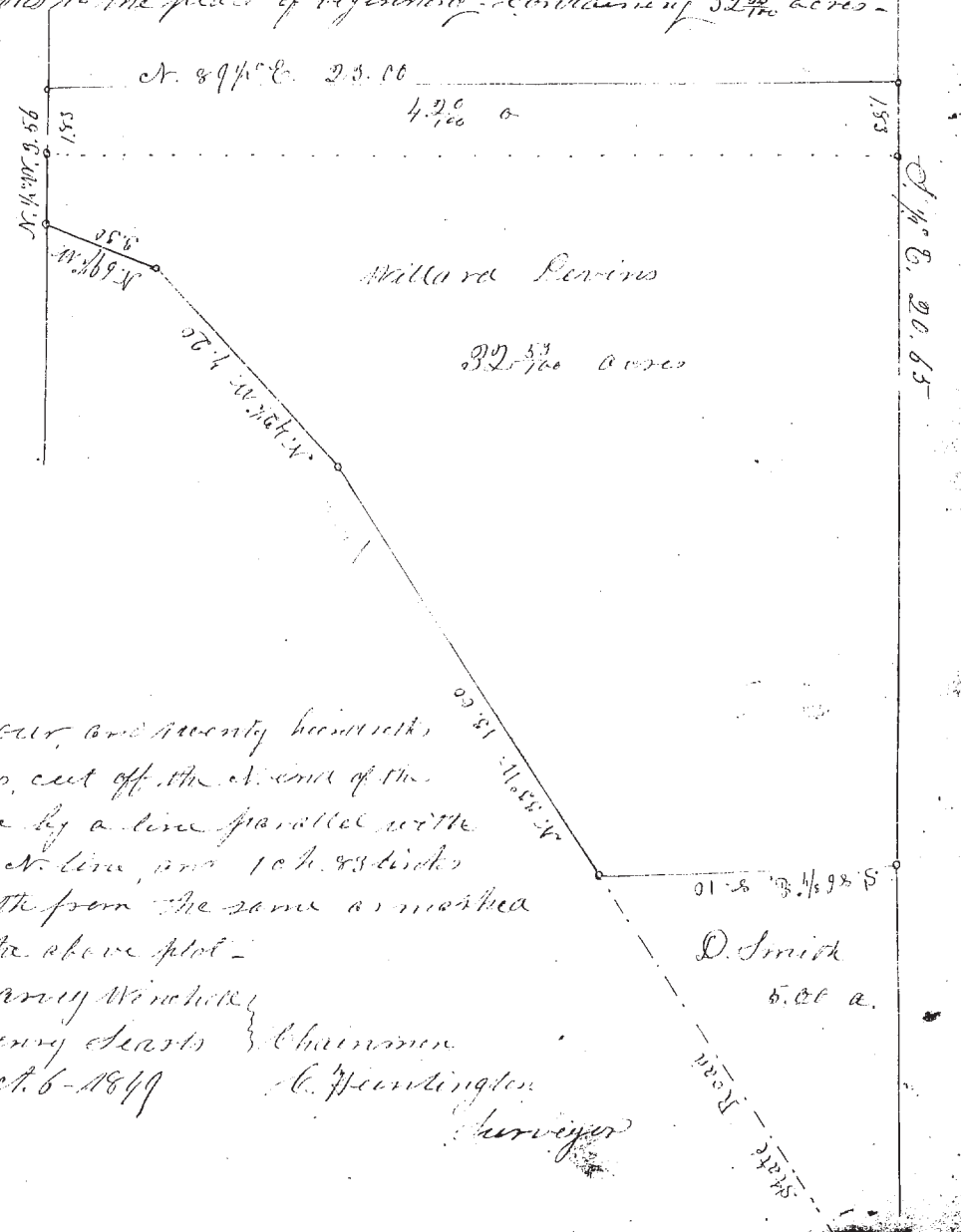
No. 55. Survey of a part of Lot No. 16 in Leroy as follows -
 viz. beginning in the center of the bridge across
 big creek on the state road from Painesville to Warren, thence following the center of sd. creek, N. 13 1/2° E. 2 chs. 90 links. Thence N. 32° E. 7 chs. N. 45 1/2° E. 4 chs. N. 30 1/4° W. 2 chs. 04 links, N. 67 1/2° W. 1 ch. 90 links. N. 15° W. 62 links to the E. line of Hono. Brown's Lot. Thence S. 89° W. 19 chs. 58 links to the W. line of Leroy Township, Thence S. 1/2° E. on town line 17 chs. 50 links, N. 89° E. 5 chs. N. 1/2° W. 4 chs. 95 links to center of State road, thence along sd. road N. 68° E. 1 ch. 21 links, S. 77 1/2° E. 3 chs. 15 links, S. 72° E. 5 chs. 16 links, S. 85° E. 1 ch. 25 links to the place of beginning containing 28 3/100 acres -

Harvey Winchell
 Henry Sears } Chairman



Oct. 6 - 1849
 C. Huntington Surveyor

No. 56 Survey of a part of Lot No. 15 in Leroy for Willard Lewis as follows, beginning at a stake in the E. line of Lot No. 15, at the N. E. corner of a piece of five acres owned by David Smith. Thence S. 86 1/4° W. 8 chs. 10 links to the center of the old state road leading from Painesville to Warren, thence along said road N. 85° W. 13 chs. Thence N. 42 1/2° W. 7 chs. 20 links thence N. 69 1/2° W. 3 chs. 30 links to the W. line of said Lot No. 15, thence N. 1/2° W. 5 chs. 56 links to a stake in the W. line of a private road along the side of a hill. Thence N. 89 1/2° E. 23 chs. to a stake in the East line of said Lot No. 15, thence S. 1/2° E. along the lot line 20 chains 65 links to the place of beginning - containing 32 5/100 acres -



Four and seventy hundredths acres, cut off the N. end of the above by a line parallel with the N. line, and 1 ch. 83 links south from the same as marked on the above plot -

Harvey Winchell
 Henry Sears } Chairman
 Oct. 6 - 1849 C. Huntington Surveyor