

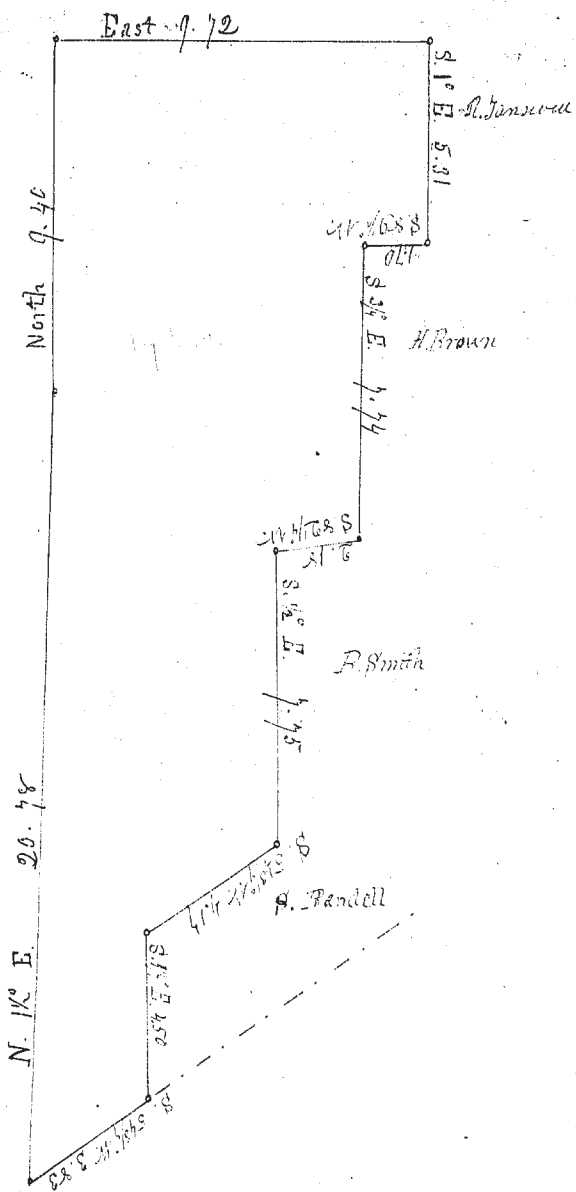
No. 48 } Survey of a part of the farm known as
 } the Clark Parker farm, in the Township
 of Mentor Lake County, as follows, beginning
 in the centre of the ridge road, running from
 Fairsville to Willoughby, at the N.E. corner of
 land owned by Green Parker and S.E. corner of
 land owned by Franklin Parker. being directly
 north of a certain butternut tree mentioned in
 the deed of said Green & Franklin Parker -
 thence running N 13° E. 20 chains 75 links to a
 forked butternut tree mentioned in the deed of
 Franklin Parker. thence N 9° chain 40 links to a
 stake at the N.E. corner of said Franklin Parker's
 land. thence E. 9° chain 75 links to a stake at the
 N.W. corner of Robert Hansell's lot thence S. 1° E.
 5 chains 31 links - thence S. 89 1/2° W. 1 chain 70 links to
 a stake at the N.W. corner of Herman Brown's lot -
 thence S. 3/4° E. 7 chains 74 links to a stake at the
 N.E. corner of Perry Smith's lot. thence S. 83 1/2° W.
 3 chains 18 links to the N.W. corner of Perry Smith's
 lot. thence S. 1/2° E. 7 chains 75 links to the N.E.
 corner of Samuel Biddell's barn. thence
 S. 54 1/2° W. 4 chains 17 links to a stake. thence
 S. 1 1/2° E. 4 chains 50 links to the centre of ridge road
 thence S. 54 1/2° W. 3 chains 83 links to the places
 of beginning. containing 19 acres and 11 hundredths
 of an acre of land.

The above mentioned land lies north of the
 ridge road - See plot on the next page -

Surveyed April 21-1849
 C. Huntington

Franklin Parker }
 Jackson Pettis } Chainmen

Surveyor



No. 49 } Survey of a part of the farm known as the
 Clark Parker farm in the township of Ellenton
 Lake County - as follows: beginning at the S. E. corner
 of land deeded by Clark Parker to Green Parker thence
 running N. 10 3/4 W. 24 chains 63 links to the centre of the ridge
 road, being also the N. E. corner of said Green Parker lot.
 Thence following the centre of the ridge road N. 54 3/4 E. 8 chain
 96 links - Thence S. 1/2° E. 4 chains 75 links to a stake at the
 S. W. corner of William Radcliff's lot - Thence N. 89 1/2° E. one
 chain to the S. E. corner of William Radcliff lot - Thence
 S. 1/2° E. 9 chains 30 links to a stake at the S. W. corner of
 Joel Smith's lot - Thence N. 89 1/2° E. 3 chains 90 links to the
 centre of a N. & S. road - Thence S. 1/2° E. 15 chains 30 links to a
 stake at the S. E. corner of the Clark Parker farm - Thence
 S. 89 1/2° W. 7 chains 84 links to the place of beginning -

Containing 22 acres and 17 hundredths of an acre, of ridge
 road, ^{after} deducting 1/3 of an acre owned by Ringland

Also survey of meadows adjoing from the above, as follows:
 Beginning at the same point as the above survey - Thence
 N. 10 3/4 W. 24 chains 63 links to the centre of the ridge road -
 Thence N. 54 3/4 E. along the road 8 chains 96 links - Thence S. 1/2°
 E. 4 chains 75 links to the S. W. corner of William Radcliff's lot -
 Thence N. 89 1/2° E. 1 chain to the S. E. corner of William Radcliff lot -
 Thence S. 1/2° E. 9 chains 30 links to the S. W. corner of Joel
 Smith's lot - Thence South 15 chains 28 links to a stake in
 the S. line of the Parker farm - Thence S. 89 1/2° W. 3 chain
 67 links to the place of beginning - Containing 16 acres -
 After deducting 1/3 of an acre owned by Ringland
 situated and lying within the bounds of the above
 survey of meadows adjoing -

See plot of the above survey on the next page -
 April 21 - 1849. C. Huntington
 Surveyor
 Franklin Parker }
 Jackson Little } Chairman